

Datasheet for ABIN870841
anti-GPC4 antibody (AA 509-520)[Go to Product page](#)

2 Images

Overview

Quantity:	100 µL
Target:	GPC4
Binding Specificity:	AA 509-520
Reactivity:	Human
Host:	Rabbit
Clonality:	Polyclonal
Conjugate:	This GPC4 antibody is un-conjugated
Application:	Western Blotting (WB), Immunohistochemistry (IHC)

Product Details

Immunogen:	Synthetic glypican-4 (aa 509-520) coupled to KLH (FEFDYNATDHAG)
Specificity:	Human glypican-4, mouse glypican-4

Target Details

Target:	GPC4
Alternative Name:	Glypican-4 (GPC4 Products)
Background:	Synonyms: K-glypican
Gene ID:	2239
UniProt:	O75487
Pathways:	Glycosaminoglycan Metabolic Process

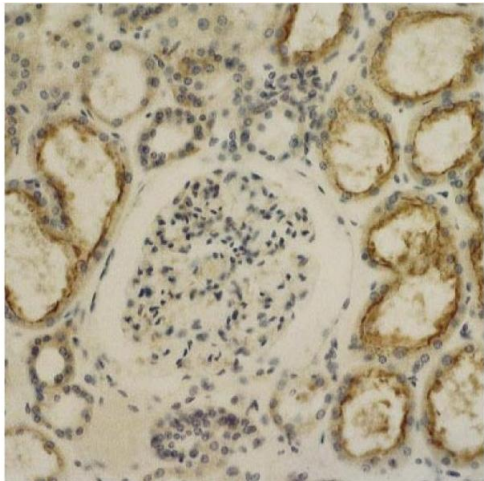
Application Details

Application Notes:	This antibody has not been tested for use in all applications. This does not necessarily exclude its use for non-tested procedures. The stated dilutions are recommendations only.
Restrictions:	For Research Use only

Handling

Format:	Lyophilized
Reconstitution:	Resuspend in aqua bidest.
Storage:	4 °C

Images



Immunohistochemistry

Image 1. Immunohistochemistry image of Glypican-4 staining in sections of human kidney tissue. The section was incubated With ABIN870841 and detected using a peroxidase- conjugated secondary antibody according to standard procedures. In the cortex ABIN870841 stains weakly the glomeruli, while the luminal surface of epithelial cells in the proximal tubules stained strongly. Original magnification: XI 280. Siebertz B et al. (1999) Biochem J 344: 937-943

Western Blotting

Image 2. Western Blot analysis of Glypican-4 expression in tissues and cell lines. Proteoglycans from the cell or tissue extracts were separated by SDS-PAGE either prior to (N) or after (H) digestion With heparinase/heparitinase. Immunoblotting With ABIN870837 detects native Glypican-4 in the range of 90-200 kDa, the Size of the core protein was approx. 57 kDa. TF-7, human haematopoietic-progenitor cell line; BM, bone marrow; Mr, molecular mass. Siebertz B et al. (1999) Biochem J 344:937-943

