

Datasheet for ABIN872285
anti-REC8 antibody (pSer251)

2 Images

[Go to Product page](#)

Overview

Quantity:	100 µL
Target:	REC8
Binding Specificity:	pSer251
Reactivity:	Mouse, Rat
Host:	Rabbit
Clonality:	Polyclonal
Conjugate:	This REC8 antibody is un-conjugated
Application:	Western Blotting (WB), ELISA, Immunofluorescence (Cultured Cells) (IF (cc)), Immunofluorescence (Paraffin-embedded Sections) (IF (p)), Immunohistochemistry (Frozen Sections) (IHC (fro)), Immunohistochemistry (Paraffin-embedded Sections) (IHC (p))

Product Details

Immunogen:	KLH conjugated synthetic phosphopeptide derived from mouse REC8 around the phosphorylation site of Ser251
Isotype:	IgG
Cross-Reactivity:	Mouse, Rat
Purification:	Purified by Protein A.

Target Details

Target:	REC8
Alternative Name:	REC8 (REC8 Products)

Target Details

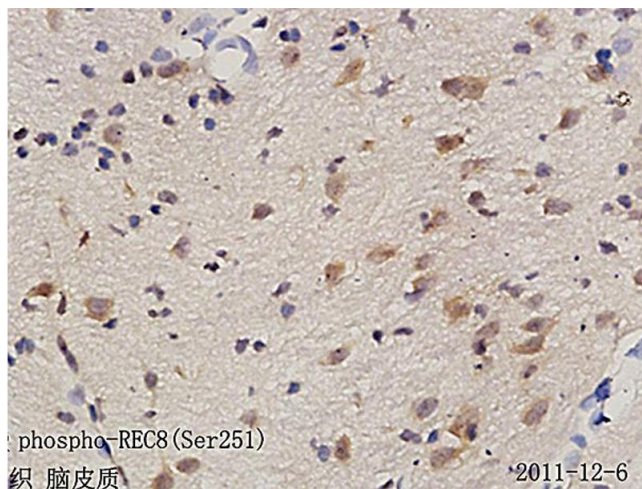
Background:	Synonyms: mrec, Rec8L1, Meiotic recombination protein REC8 homolog, Cohesin Rec8p, Rec8, Mei8 Background: Required during meiosis for separation of sister chromatids and homologous chromosomes. Proteolytic cleavage of REC8 on chromosome arms by separin during anaphase I allows for homologous chromosome separation in meiosis I and cleavage of REC8 on centromeres during anaphase II allows for sister chromatid separation in meiosis II.
Gene ID:	56739
UniProt:	Q8C5S7

Application Details

Application Notes:	WB 1:300-5000 ELISA 1:500-1000 IHC-P 1:200-400 IHC-F 1:100-500 IF(IHC-P) 1:50-200 IF(IHC-F) 1:50-200 IF(ICC) 1:50-200
Restrictions:	For Research Use only

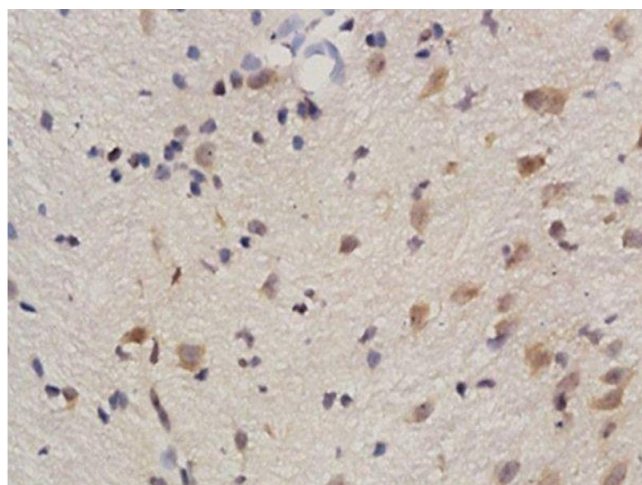
Handling

Format:	Liquid
Concentration:	1 µg/µL
Buffer:	0.01M TBS(pH 7.4) with 1 % BSA, 0.02 % Proclin300 and 50 % Glycerol.
Preservative:	ProClin
Precaution of Use:	This product contains ProClin: a POISONOUS AND HAZARDOUS SUBSTANCE, which should be handled by trained staff only.
Storage:	4 °C,-20 °C
Storage Comment:	Shipped at 4°C. Store at -20°C for one year. Avoid repeated freeze/thaw cycles.
Expiry Date:	12 months



Immunohistochemistry

Image 1. Formalin-fixed and paraffin embedded rat brain tissue labeled with Anti phospho-REC8(Ser251) Polyclonal Antibody, Unconjugated (ABIN872285) followed by conjugation to the secondary antibody and DAB staining



Immunohistochemistry (Paraffin-embedded Sections)

Image 2. Formalin-fixed and paraffin embedded rat brain tissue labeled with Anti phospho-REC8(Ser251) Polyclonal Antibody, Unconjugated followed by conjugation to the secondary antibody and DAB staining