



[Go to Product page](#)

Datasheet for ABIN872299

anti-PP2A alpha/beta antibody (pTyr307)

2 Images

Overview

Quantity:	100 µL
Target:	PP2A alpha/beta (PP2A A/B)
Binding Specificity:	pTyr307
Reactivity:	Human, Rat
Host:	Rabbit
Clonality:	Polyclonal
Conjugate:	This PP2A alpha/beta antibody is un-conjugated
Application:	Western Blotting (WB), Immunofluorescence (Cultured Cells) (IF (cc)), Immunofluorescence (Paraffin-embedded Sections) (IF (p)), ELISA, Immunohistochemistry (Paraffin-embedded Sections) (IHC (p)), Immunohistochemistry (Frozen Sections) (IHC (fro))

Product Details

Immunogen:	KLH conjugated synthetic phosphopeptide derived from human PPP2CA around the phosphorylation site of Tyr307
Isotype:	IgG
Cross-Reactivity:	Human, Rat
Predicted Reactivity:	Mouse,Dog,Cow,Pig,Chicken
Purification:	Purified by Protein A.

Target Details

Target:	PP2A alpha/beta (PP2A A/B)
---------	----------------------------

Target Details

Alternative Name: PP2A alpha / beta ([PP2A A/B Products](#))

Background: Synonyms: PP2A alpha phospho Y307, p-PP2A alphaY307, PP2A A, PP2A alpha, PP2A B, PP2A beta, PP2Ac, PP2C alpha, PP2C beta, PP2CA, PP2CB, PPP2CA, PPP2CB, Protein phosphatase 2 formerly 2A catalytic subunit alpha isoform, Protein phosphatase 2 formerly 2A catalytic subunit beta isoform, Protein phosphatase 2, Protein phosphatase 2 catalytic subunit alpha isoform, Protein phosphatase 2 catalytic subunit beta isoform, Protein Phosphatase 2A, Protein phosphatase type 2A catalytic subunit, Replication protein C, RP C, Serine/threonine protein phosphatase 2A catalytic subunit alpha isoform, Serine/threonine protein phosphatase 2A catalytic subunit beta isoform, Serine/threonine protein phosphatase.

Background: This gene encodes the phosphatase 2A catalytic subunit. Protein phosphatase 2A is one of the four major Ser/Thr phosphatases, and it is implicated in the negative control of cell growth and division. It consists of a common heteromeric core enzyme, which is composed of a catalytic subunit and a constant regulatory subunit, that associates with a variety of regulatory subunits. This gene encodes an alpha isoform of the catalytic subunit. [provided by RefSeq, Jul 2008].

Gene ID: 5520, 5516

Application Details

Application Notes: WB 1:300-5000
ELISA 1:500-1000
IHC-P 1:200-400
IHC-F 1:100-500
IF(IHC-P) 1:50-200
IF(IHC-F) 1:50-200
IF(ICC) 1:50-200

Restrictions: For Research Use only

Handling

Format: Liquid

Concentration: 1 µg/µL

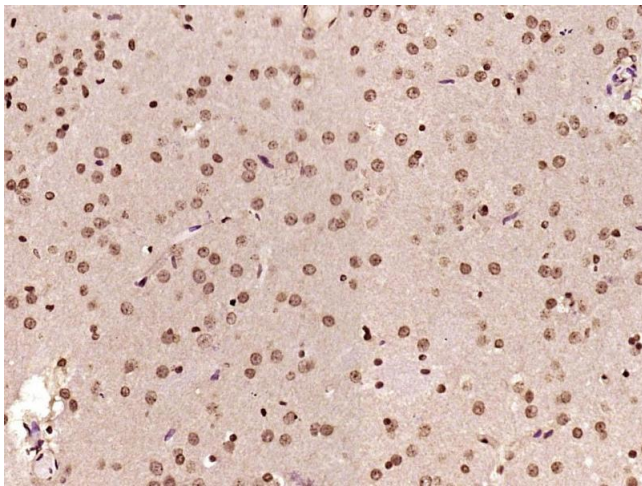
Buffer: 0.01M TBS(pH 7.4) with 1 % BSA, 0.02 % Proclin300 and 50 % Glycerol.

Preservative: ProClin

Handling

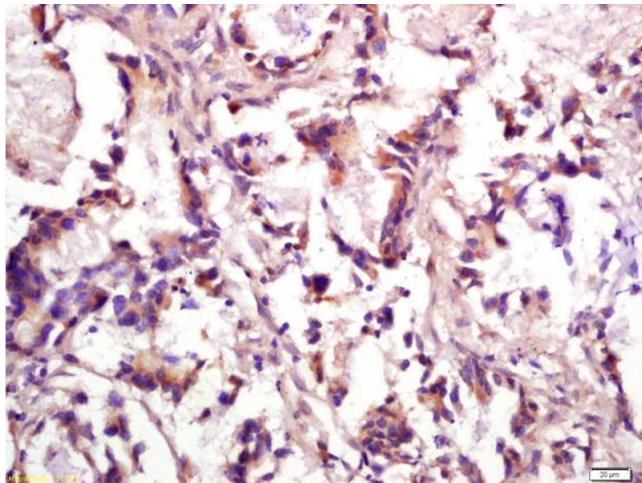
Precaution of Use:	This product contains ProClin: a POISONOUS AND HAZARDOUS SUBSTANCE, which should be handled by trained staff only.
Storage:	4 °C,-20 °C
Storage Comment:	Shipped at 4°C. Store at -20°C for one year. Avoid repeated freeze/thaw cycles.
Expiry Date:	12 months

Images



Immunohistochemistry (Paraffin-embedded Sections)

Image 1. Paraformaldehyde-fixed, paraffin embedded Rat brain Antigen retrieval by boiling in sodium citrate buffer (pH6.0) for 15min Block endogenous peroxidase by 3% hydrogen peroxide for 20 minutes Blocking buffer (normal goat serum) at 37°C for 30min Antibody incubation with PP2A alpha / beta(Tyr307) Polyclonal Antibody, Unconjugated at 1:400 overnight at 4°C, DAB staining.



Immunohistochemistry

Image 2. Formalin-fixed and paraffin embedded human gastric cancer labeled with Anti-phospho-PP2A alpha+beta(Tyr307) Polyclonal Antibody, Unconjugated (ABIN872299) at 1:200 followed by conjugation to the secondary antibody and DAB staining