

Datasheet for ABIN872332
anti-NOD1 antibody (AA 51-150)

3 Images

1 Publication

[Go to Product page](#)

Overview

Quantity:	100 µL
Target:	NOD1
Binding Specificity:	AA 51-150
Reactivity:	Human, Mouse, Rat
Host:	Rabbit
Clonality:	Polyclonal
Conjugate:	This NOD1 antibody is un-conjugated
Application:	Western Blotting (WB), ELISA, Immunohistochemistry (Paraffin-embedded Sections) (IHC (p)), Immunohistochemistry (Frozen Sections) (IHC (fro)), Immunofluorescence (Cultured Cells) (IF (cc)), Immunofluorescence (Paraffin-embedded Sections) (IF (p))

Product Details

Immunogen:	KLH conjugated synthetic peptide derived from human CARD4
Isotype:	IgG
Cross-Reactivity:	Human, Mouse, Rat
Purification:	Purified by Protein A.

Target Details

Target:	NOD1
Alternative Name:	CARD4 (NOD1 Products)

Target Details

Background:	<p>Synonyms: CARD4, NLRC1, CLR7.1, Nucleotide-binding oligomerization domain-containing protein 1, Caspase recruitment domain-containing protein 4, NOD1</p> <p>Background: Enhances caspase-9-mediated apoptosis. Induces NF-kappa-B activity via RIPK2 and IKK-gamma. Confers responsiveness to intracellular bacterial lipopolysaccharides (LPS). Forms an intracellular sensing system along with ARHGEF2 for the detection of microbial effectors during cell invasion by pathogens. Required for RHOA and RIPK2 dependent NF-kappa-B signaling pathway activation upon S.flexneri cell invasion. Involved not only in sensing peptidoglycan (PGN)-derived muropeptides but also in the activation of NF-kappa-B by Shigella effector proteins IpgB2 and OspB. Recruits NLRP10 to the cell membrane following bacterial infection.</p>
Gene ID:	10392
UniProt:	Q9Y239
Pathways:	Activation of Innate immune Response , Positive Regulation of Endopeptidase Activity , Toll-Like Receptors Cascades , Inflammasome

Application Details

Application Notes:	<p>WB 1:300-5000</p> <p>ELISA 1:500-1000</p> <p>IHC-P 1:200-400</p> <p>IHC-F 1:100-500</p> <p>IF(IHC-P) 1:50-200</p> <p>IF(IHC-F) 1:50-200</p> <p>IF(ICC) 1:50-200</p>
Restrictions:	For Research Use only

Handling

Format:	Liquid
Concentration:	1 µg/µL
Buffer:	0.01M TBS(pH 7.4) with 1 % BSA, 0.02 % Proclin300 and 50 % Glycerol.
Preservative:	ProClin
Precaution of Use:	This product contains ProClin: a POISONOUS AND HAZARDOUS SUBSTANCE, which should be handled by trained staff only.

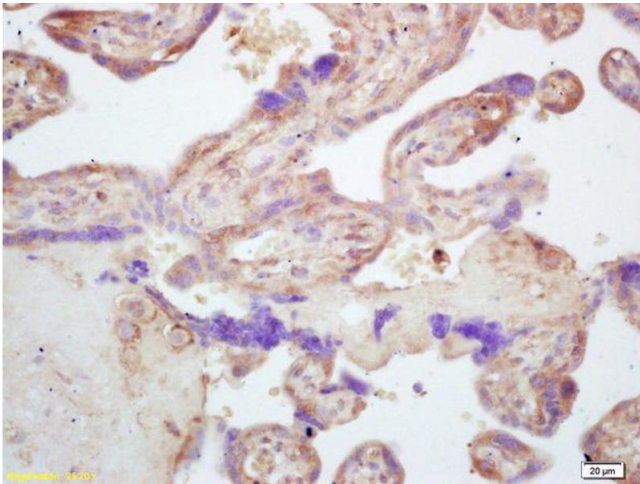
Handling

Storage:	4 °C,-20 °C
Storage Comment:	Shipped at 4°C. Store at -20°C for one year. Avoid repeated freeze/thaw cycles.
Expiry Date:	12 months

Publications

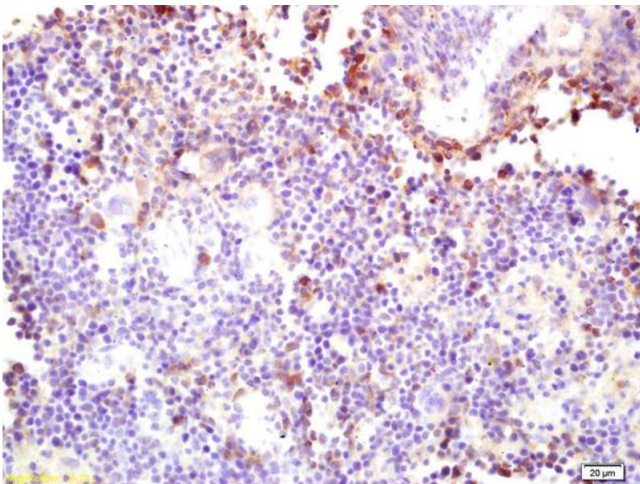
Product cited in:	Arentsen, Qian, Gkotsis, Femenia, Wang, Udekwa, Forssberg, Diaz Heijtz: "The bacterial peptidoglycan-sensing molecule Pglyrp2 modulates brain development and behavior." in: Molecular psychiatry , Vol. 22, Issue 2, pp. 257-266, (2016) (PubMed).
-------------------	--

Images



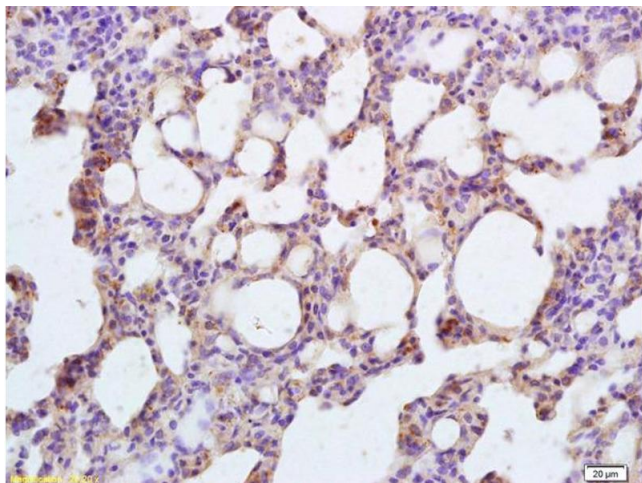
Immunohistochemistry

Image 1. Formalin-fixed and paraffin embedded human placenta labeled with Rabbit Anti CARD4 Polyclonal Antibody, Unconjugated (ABIN872332) at 1:200 followed by conjugation to the secondary antibody and DAB staining



Immunohistochemistry

Image 2. Formalin-fixed and paraffin embedded mouse spleen labeled with Rabbit Anti CARD4 Polyclonal Antibody, Unconjugated (ABIN872332) at 1:200 followed by conjugation to the secondary antibody and DAB staining



Immunohistochemistry

Image 3. Formalin-fixed and paraffin embedded rat lung labeled with Rabbit Anti CARD4 Polyclonal Antibody, Unconjugated (ABIN872332) at 1:200 followed by conjugation to the secondary antibody and DAB staining