



Datasheet for ABIN872340  
**anti-SLC12A3 antibody (AA 951-1021)**



[Go to Product page](#)

3 Images

2 Publications

### Overview

Quantity:	100 µL
Target:	SLC12A3
Binding Specificity:	AA 951-1021
Reactivity:	Human
Host:	Rabbit
Clonality:	Polyclonal
Conjugate:	This SLC12A3 antibody is un-conjugated
Application:	ELISA, Flow Cytometry (FACS), Immunofluorescence (Cultured Cells) (IF (cc)), Immunofluorescence (Paraffin-embedded Sections) (IF (p)), Immunohistochemistry (Paraffin-embedded Sections) (IHC (p)), Immunohistochemistry (Frozen Sections) (IHC (fro))

### Product Details

Immunogen:	KLH conjugated synthetic peptide derived from human SLC12A3
Isotype:	IgG
Cross-Reactivity:	Human
Predicted Reactivity:	Mouse,Rat,Dog,Cow,Rabbit
Purification:	Purified by Protein A.

### Target Details

Target:	SLC12A3
---------	---------

## Target Details

---

Alternative Name:	Slc12a3 ( <a href="#">SLC12A3 Products</a> )
Background:	Synonyms: NCC, TSC, NCCT, Solute carrier family 12 member 3, Na-Cl cotransporter, Na-Cl symporter, Thiazide-sensitive sodium-chloride cotransporter, SLC12A3 Background: Key mediator of sodium and chloride reabsorption in this nephron segment, accounting for a significant fraction of renal sodium reabsorption.
Gene ID:	6559
UniProt:	<a href="#">P55017</a>

## Application Details

---

Application Notes:	ELISA 1:500-1000 FCM 1:20-100 IHC-P 1:200-400 IHC-F 1:100-500 IF(IHC-P) 1:50-200 IF(IHC-F) 1:50-200 IF(ICC) 1:50-200
Restrictions:	For Research Use only

## Handling

---

Format:	Liquid
Concentration:	1 µg/µL
Buffer:	0.01M TBS( pH 7.4) with 1 % BSA, 0.02 % Proclin300 and 50 % Glycerol.
Preservative:	ProClin
Precaution of Use:	This product contains ProClin: a POISONOUS AND HAZARDOUS SUBSTANCE, which should be handled by trained staff only.
Storage:	4 °C,-20 °C
Storage Comment:	Shipped at 4°C. Store at -20°C for one year. Avoid repeated freeze/thaw cycles.
Expiry Date:	12 months

## Publications

---

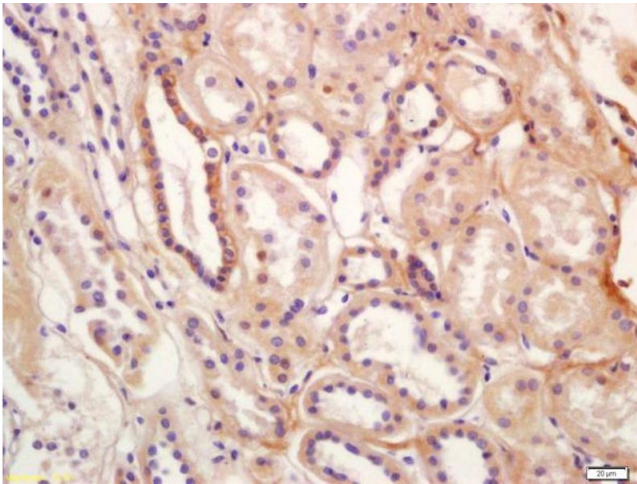
Product cited in:	Turco, Lam, Rule, Denic, Lieske, Miller, Larson, Kremers, Jayachandran: "Specific renal
-------------------	---

parenchymal-derived urinary extracellular vesicles identify age-associated structural changes in living donor kidneys." in: **Journal of extracellular vesicles**, Vol. 5, pp. 29642, (2016) ([PubMed](#)).

Jayachandran, Lugo, Heiling, Miller, Rule, Lieske: "Extracellular vesicles in urine of women with but not without kidney stones manifest patterns similar to men: a case control study." in:

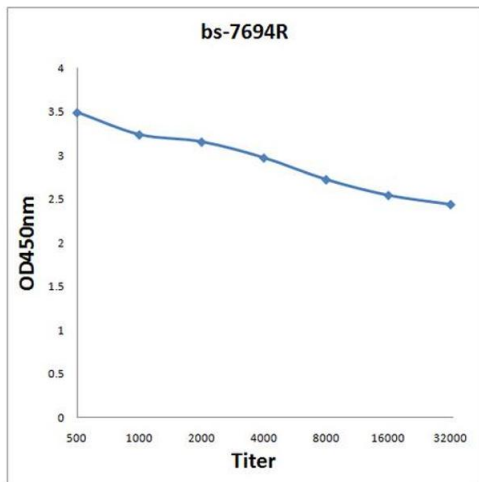
**Biology of sex differences**, Vol. 6, pp. 2, (2015) ([PubMed](#)).

Images



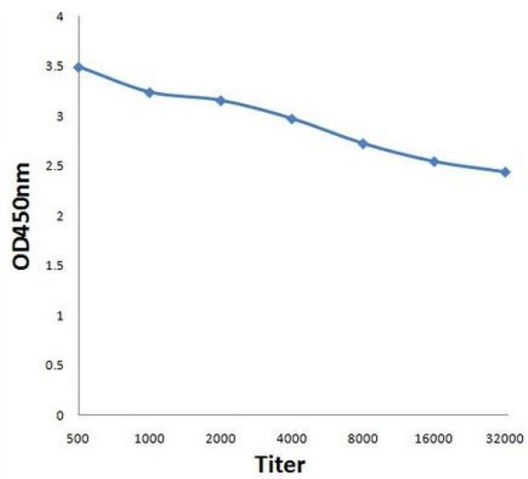
Immunohistochemistry

**Image 1.** Formalin-fixed and paraffin embedded human kidney labeled with Anti-SLC12A3 Polyclonal Antibody, Unconjugated (ABIN872340) at 1:200 followed by conjugation to the secondary antibody and DAB staining



ELISA

**Image 2.** Antigen: 0.2 µg/100 µL Primary: Antiserum, 1:500, 1:1000, 1:2000, 1:4000, 1:8000, 1:16000, 1:32000; Secondary: HRP conjugated Goat Anti-Rabbit IgG at 1: 5000; TMB staining; Read the data in MicroplateReader by 450nm.



### ELISA

**Image 3.** Antigen: 0.2ug/100ul, Primary: Antiserum, 1:500, 1:1000, 1:2000, 1:4000, 1:8000, 1:16000, 1:32000, Secondary: HRP conjugated Goat Anti-Rabbit IgG at 1: 5000, TMB staining, Read the data in MicroplateReader by 450nm.