



Datasheet for ABIN872344

anti-ATP2A1/SERCA1 antibody (AA 101-200)



[Go to Product page](#)

1 Image

Overview

Quantity:	100 µL
Target:	ATP2A1/SERCA1 (ATP2A1)
Binding Specificity:	AA 101-200
Reactivity:	Rat
Host:	Rabbit
Clonality:	Polyclonal
Conjugate:	This ATP2A1/SERCA1 antibody is un-conjugated
Application:	Western Blotting (WB), ELISA, Immunohistochemistry (Paraffin-embedded Sections) (IHC (p)), Flow Cytometry (FACS), Immunofluorescence (Cultured Cells) (IF (cc)), Immunofluorescence (Paraffin-embedded Sections) (IF (p)), Immunohistochemistry (Frozen Sections) (IHC (fro))

Product Details

Immunogen:	KLH conjugated synthetic peptide derived from human SERCA1 ATPase
Isotype:	IgG
Cross-Reactivity:	Rat
Predicted Reactivity:	Human,Mouse,Dog,Cow,Sheep,Horse,Rabbit
Purification:	Purified by Protein A.

Target Details

Target:	ATP2A1/SERCA1 (ATP2A1)
---------	------------------------

Target Details

Alternative Name: SERCA1 ATPase ([ATP2A1 Products](#))

Background: Synonyms: fast twitch skeletal muscle isoform, AT2A1_HUMAN, ATP2A, ATP2A1, ATPase Ca⁺⁺ transporting cardiac muscle fast twitch 1, ATPase Ca⁺⁺ transporting fast twitch 1, ATPase, Ca²⁺-transporting fast twitch 1, Calcium pump 1, Calcium transporting ATPase sarcoplasmic reticulum type fast twitch skeletal muscle isoform, Calcium-transporting ATPase sarcoplasmic reticulum type, EC 3.6.3.8, Endoplasmic reticulum class 1/2 Ca²⁺ ATPase, Fast skeletal muscle SR calcium ATPase, OTTHUMP00000162561, OTTHUMP00000162562, Sarcoendoplasmic reticulum calcium ATPase, Sarcoplasmic reticulum Ca²⁺-ATPase 1, Ca-ATPase, Sarcoplasmic/endoplasmic reticulum calcium ATPase 1, SERCA 1, SERCA1, SERCA1 truncated isoform, included, SR Ca²⁺ ATPase 1, SR Ca²⁺-ATPase 1.

Background: This magnesium-dependent enzyme catalyzes the hydrolysis of ATP coupled with the translocation of calcium from the cytosol to the sarcoplasmic reticulum lumen. Contributes to calcium sequestration involved in muscular excitation/contraction.

Gene ID: 487

Pathways: [Ribonucleoside Biosynthetic Process](#)

Application Details

Application Notes: WB 1:300-5000
ELISA 1:500-1000
FCM 1:20-100
IHC-P 1:200-400
IHC-F 1:100-500
IF(IHC-P) 1:50-200
IF(IHC-F) 1:50-200
IF(ICC) 1:50-200

Restrictions: For Research Use only

Handling

Format: Liquid

Concentration: 1 µg/µL

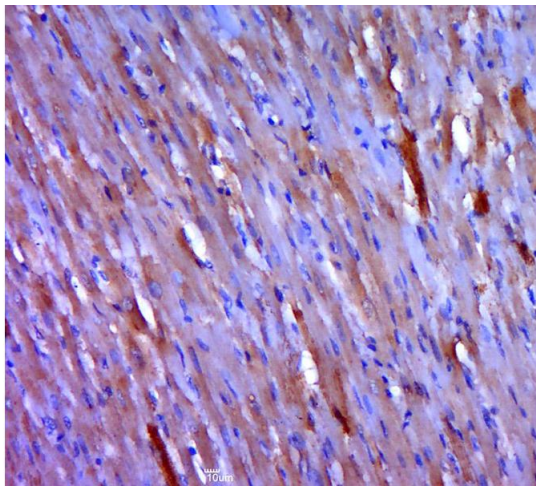
Buffer: 0.01M TBS(pH 7.4) with 1 % BSA, 0.02 % Proclin300 and 50 % Glycerol.

Preservative: ProClin

Handling

Precaution of Use:	This product contains ProClin: a POISONOUS AND HAZARDOUS SUBSTANCE, which should be handled by trained staff only.
Storage:	4 °C,-20 °C
Storage Comment:	Shipped at 4°C. Store at -20°C for one year. Avoid repeated freeze/thaw cycles.
Expiry Date:	12 months

Images



Immunohistochemistry (Paraffin-embedded Sections)

Image 1. Paraformaldehyde-fixed, paraffin embedded rat muscle; Antigen retrieval by boiling in sodium citrate buffer (pH6.0) for 15min; Block endogenous peroxidase by 3% hydrogen peroxide for 20 minutes; Blocking buffer (normal goat serum) at 37°C for 30min; Antibody incubation with SERCA1 ATPase Polyclonal Antibody, Unconjugated (bs-7539R) at 1:400 overnight at 4°C, followed by a conjugated secondary for 20 minutes and DAB staining.