

Datasheet for ABIN872353
anti-NLRP4 antibody (AA 351-450)[Go to Product page](#)

4 Images

Overview

Quantity:	100 µL
Target:	NLRP4
Binding Specificity:	AA 351-450
Reactivity:	Human, Rat
Host:	Rabbit
Clonality:	Polyclonal
Conjugate:	This NLRP4 antibody is un-conjugated
Application:	ELISA, Immunofluorescence (Cultured Cells) (IF (cc)), Immunofluorescence (Paraffin-embedded Sections) (IF (p)), Immunohistochemistry (Frozen Sections) (IHC (fro)), Immunohistochemistry (Paraffin-embedded Sections) (IHC (p))

Product Details

Immunogen:	KLH conjugated synthetic peptide derived from human NALP4
Isotype:	IgG
Specificity:	This antibody will detect multiple forms of NALP4, including the A, C and E Mouse variants.
Cross-Reactivity:	Human, Rat
Predicted Reactivity:	Mouse,Pig,Horse
Purification:	Purified by Protein A.

Target Details

Target:	NLRP4
Alternative Name:	NALP4 (NLRP4 Products)
Background:	<p>Synonyms: NACHT, LRR and PYD domains-containing protein 4, Cancer/testis antigen 58, CT58, PAAD and NACHT-containing protein 2, PAN2, PYRIN and NACHT-containing protein 2, PYRIN-containing APAF1-like protein 4, PYPAF4, Ribonuclease inhibitor 2, NLRP4, NALP4, RNH2</p> <p>Background: May be involved in inflammation and recognition of cytosolic pathogen-associated molecular patterns (PAMPs) not intercepted by membrane-bound receptors. Acts as a negative regulator of the type I interferon signaling pathway by serving as an adapter to promote DTX4-mediated ubiquitination of activated TBK1, and its subsequent degradation. Suppresses NF-kappaB induction by the cytokines TNFA and IL1B, suggesting that it operates at a point of convergence in these two cytokine signaling pathways.</p>
Gene ID:	147945
UniProt:	Q96MN2
Pathways:	Inflammasome

Application Details

Application Notes:	ELISA 1:500-1000 IHC-P 1:200-400 IHC-F 1:100-500 IF(IHC-P) 1:50-200 IF(IHC-F) 1:50-200 IF(ICC) 1:50-200
--------------------	--

Restrictions:	For Research Use only
---------------	-----------------------

Handling

Format:	Liquid
Concentration:	1 µg/µL
Buffer:	0.01M TBS(pH 7.4) with 1 % BSA, 0.02 % Proclin300 and 50 % Glycerol.
Preservative:	ProClin
Precaution of Use:	This product contains ProClin: a POISONOUS AND HAZARDOUS SUBSTANCE, which should be

Handling

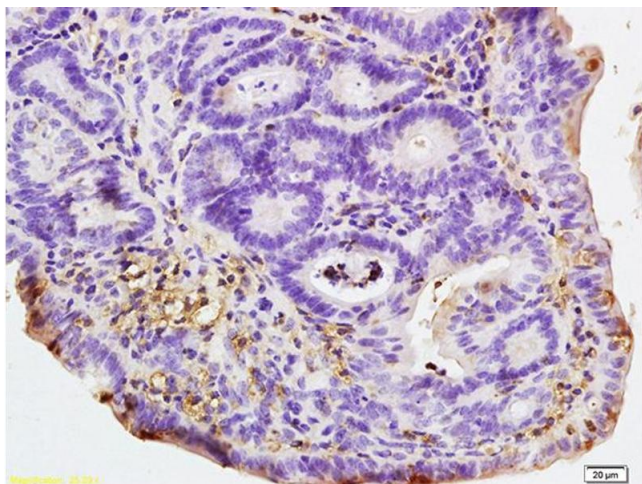
handled by trained staff only.

Storage: 4 °C, -20 °C

Storage Comment: Shipped at 4°C. Store at -20°C for one year. Avoid repeated freeze/thaw cycles.

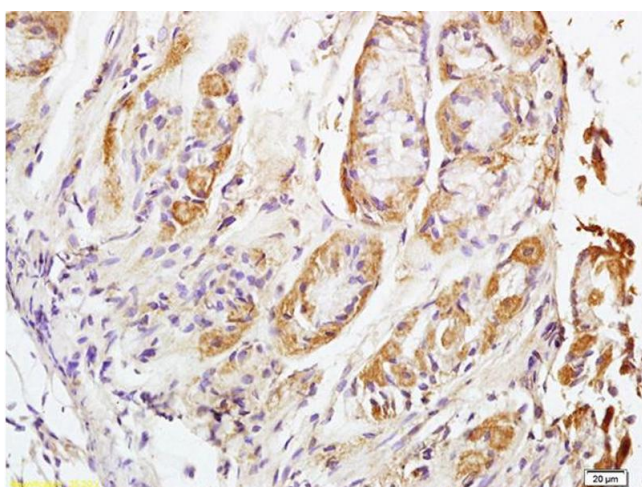
Expiry Date: 12 months

Images



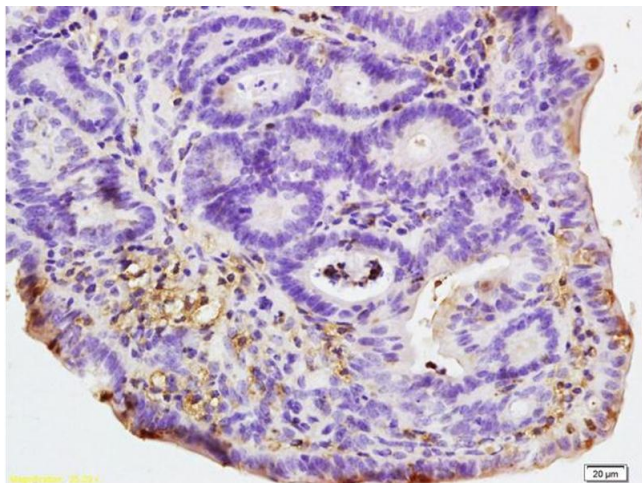
Immunohistochemistry

Image 1. Formalin-fixed and paraffin embedded human colon carcinoma labeled with Rabbit Anti NALP4 Polyclonal Antibody, Unconjugated (ABIN872353) at 1:200 followed by conjugation to the secondary antibody and DAB staining



Immunohistochemistry

Image 2. Formalin-fixed and paraffin embedded human lung carcinoma labeled with Rabbit Anti NALP4 Polyclonal Antibody, Unconjugated (ABIN872353) at 1:200 followed by conjugation to the secondary antibody and DAB staining



Immunohistochemistry

Image 3. Formalin-fixed and paraffin embedded rat colitis labeled with Rabbit Anti NALP4 Polyclonal Antibody, Unconjugated (ABIN872353) at 1:200 followed by conjugation to the secondary antibody and DAB staining

Please check the [product details page](#) for more images. Overall 4 images are available for ABIN872353.