

Datasheet for ABIN872368
anti-GDF2 antibody (AA 351-429)[Go to Product page](#)

2 Images

Overview

Quantity:	100 µL
Target:	GDF2
Binding Specificity:	AA 351-429
Reactivity:	Human, Mouse, Rat
Host:	Rabbit
Clonality:	Polyclonal
Conjugate:	This GDF2 antibody is un-conjugated
Application:	Western Blotting (WB), ELISA, Immunohistochemistry (Paraffin-embedded Sections) (IHC (p)), Immunofluorescence (Cultured Cells) (IF (cc)), Immunofluorescence (Paraffin-embedded Sections) (IF (p)), Immunohistochemistry (Frozen Sections) (IHC (fro))

Product Details

Immunogen:	KLH conjugated synthetic peptide derived from human BMP9
Isotype:	IgG
Cross-Reactivity:	Human, Mouse, Rat
Predicted Reactivity:	Rabbit
Purification:	Purified by Protein A.

Target Details

Target:	GDF2
---------	------

Target Details

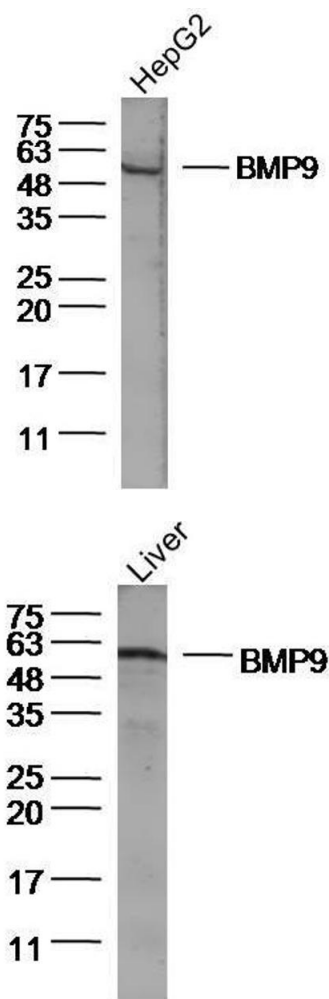
Alternative Name:	BMP9 (GDF2 Products)
Background:	<p>Synonyms: BMP9, HHT5, BMP-9, Growth/differentiation factor 2, GDF-2, Bone morphogenetic protein 9, GDF2</p> <p>Background: Potent circulating inhibitor of angiogenesis. Could be involved in bone formation.</p> <p>Signals through the type I activin receptor ACVRL1 but not other Alks. Signaling through SMAD1 in endothelial cells requires TGF-beta coreceptor endoglin/ENG.</p>
Gene ID:	2658
UniProt:	Q9UK05
Pathways:	Transition Metal Ion Homeostasis

Application Details

Application Notes:	<p>WB 1:300-5000</p> <p>ELISA 1:500-1000</p> <p>IHC-P 1:200-400</p> <p>IHC-F 1:100-500</p> <p>IF(IHC-P) 1:50-200</p> <p>IF(IHC-F) 1:50-200</p> <p>IF(ICC) 1:50-200</p>
Restrictions:	For Research Use only

Handling

Format:	Liquid
Concentration:	1 µg/µL
Buffer:	0.01M TBS(pH 7.4) with 1 % BSA, 0.02 % Proclin300 and 50 % Glycerol.
Preservative:	ProClin
Precaution of Use:	This product contains ProClin: a POISONOUS AND HAZARDOUS SUBSTANCE, which should be handled by trained staff only.
Storage:	4 °C,-20 °C
Storage Comment:	Shipped at 4°C. Store at -20°C for one year. Avoid repeated freeze/thaw cycles.
Expiry Date:	12 months



Western Blotting

Image 1. Lane 1: Human HepG2 lysates probed with BMP9 Polyclonal Antibody, Unconjugated at 1:300 overnight at 4°C. Followed by a conjugated secondary antibody at 1:5000 for 90 min at 37°C.

Western Blotting

Image 2. Lane 1: Mouse Liver lysates, probed with BMP9 Polyclonal Antibody, Unconjugated at 1:300 overnight at 4°C. Followed by a conjugated secondary antibody at 1:5000 for 90 min at 37°C.