



[Go to Product page](#)

Datasheet for ABIN872404

anti-AUTS2 antibody (AA 845-945)

2 Images

Overview

Quantity:	100 µL
Target:	AUTS2
Binding Specificity:	AA 845-945
Reactivity:	Human
Host:	Rabbit
Clonality:	Polyclonal
Conjugate:	This AUTS2 antibody is un-conjugated
Application:	Western Blotting (WB), Immunofluorescence (Cultured Cells) (IF (cc)), Immunofluorescence (Paraffin-embedded Sections) (IF (p)), ELISA, Immunohistochemistry (Paraffin-embedded Sections) (IHC (p)), Immunohistochemistry (Frozen Sections) (IHC (fro))

Product Details

Immunogen:	KLH conjugated synthetic peptide derived from human AUTS2
Isotype:	IgG
Cross-Reactivity:	Human
Predicted Reactivity:	Mouse,Rat,Rabbit
Purification:	Purified by Protein A.

Target Details

Target:	AUTS2
---------	-------

Target Details

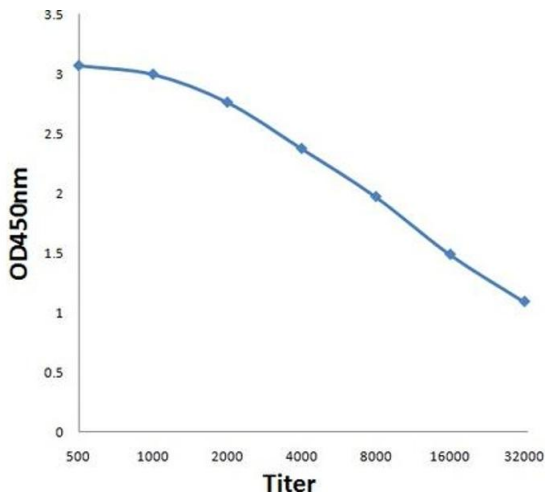
Alternative Name:	AUTS2 (AUTS2 Products)
Background:	<p>Synonyms: Autism related protein 1, Autism susceptibility candidate 2, Autism susceptibility gene 2 protein, FBRSL2.</p> <p>Background: Autism susceptibility gene 2 protein (AUTS2) is strongly expressed in brain, skeletal muscle and kidney and is also expressed in placenta, lung and leukocytes. There are 2 isoforms produced by alternative splicing, isoform long and isoform short of 139 kDa and 136 kDa respectively. This gene is interrupted by a translocation breakpoint in a pair of autistic twins.</p>
Gene ID:	26053

Application Details

Application Notes:	WB 1:300-5000 ELISA 1:500-1000 IHC-P 1:200-400 IHC-F 1:100-500 IF(IHC-P) 1:50-200 IF(IHC-F) 1:50-200 IF(ICC) 1:50-200
Restrictions:	For Research Use only

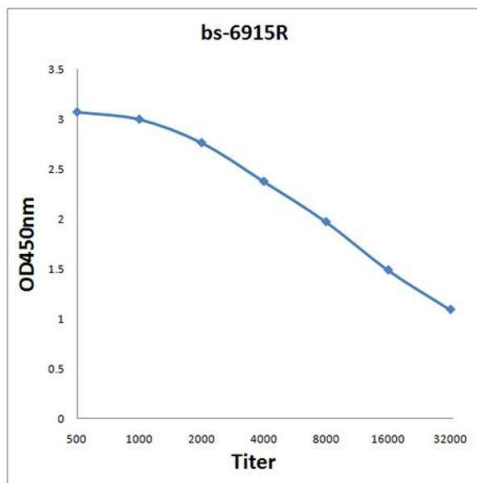
Handling

Format:	Liquid
Concentration:	1 µg/µL
Buffer:	0.01M TBS(pH 7.4) with 1 % BSA, 0.02 % Proclin300 and 50 % Glycerol.
Preservative:	ProClin
Precaution of Use:	This product contains ProClin: a POISONOUS AND HAZARDOUS SUBSTANCE, which should be handled by trained staff only.
Storage:	4 °C,-20 °C
Storage Comment:	Shipped at 4°C. Store at -20°C for one year. Avoid repeated freeze/thaw cycles.
Expiry Date:	12 months



ELISA

Image 1. Antigen: 0.2ug/100ul, Primary: Antiserum, 1:500, 1:1000, 1:2000, 1:4000, 1:8000, 1:16000, 1:32000, Secondary: HRP conjugated Goat-Anti-Rabbit IgG at 1: 5000, TMB staining, Read the data in MicroplateReader by 450nm



ELISA

Image 2. Antigen: 0.2 µg/100 µL Primary: Antiserum, 1:500, 1:1000, 1:2000, 1:4000, 1:8000, 1:16000, 1:32000; Secondary: HRP conjugated Goat-Anti-Rabbit IgG at 1: 5000; TMB staining; Read the data in MicroplateReader by 450