

Datasheet for ABIN872411
anti-Ataxin 2 antibody (AA 775-856)[Go to Product page](#)

3 Images

Overview

Quantity:	100 µL
Target:	Ataxin 2 (ATXN2)
Binding Specificity:	AA 775-856
Reactivity:	Mouse
Host:	Rabbit
Clonality:	Polyclonal
Conjugate:	This Ataxin 2 antibody is un-conjugated
Application:	Western Blotting (WB), ELISA, Immunofluorescence (Cultured Cells) (IF (cc)), Immunofluorescence (Paraffin-embedded Sections) (IF (p)), Immunohistochemistry (Paraffin-embedded Sections) (IHC (p)), Immunohistochemistry (Frozen Sections) (IHC (fro))

Product Details

Immunogen:	KLH conjugated synthetic peptide derived from human ATX2
Isotype:	IgG
Cross-Reactivity:	Mouse
Predicted Reactivity:	Human,Rat,Dog,Cow,Pig,Horse,Chicken
Purification:	Purified by Protein A.

Target Details

Target:	Ataxin 2 (ATXN2)
---------	------------------

Target Details

Alternative Name:	ATX2 (ATXN2 Products)
Background:	<p>Synonyms: ATX2, SCA2, ASL13, TNRC13, Ataxin-2, Spinocerebellar ataxia type 2 protein, Trinucleotide repeat-containing gene 13 protein, ATXN2</p> <p>Background: The autosomal dominant cerebellar ataxias (ADCA) are a heterogeneous group of neurodegenerative disorders characterized by progressive degeneration of the cerebellum, brain stem and spinal cord. Clinically, ADCA has been divided into three groups: ADCA types I-III. ATX2 belongs to the autosomal dominant cerebellar ataxias type I (ADCA I) which are characterized by cerebellar ataxia in combination with additional clinical features like optic atrophy, ophthalmoplegia, bulbar and extrapyramidal signs, peripheral neuropathy and dementia. ATX2 is caused by expansion of a CAG repeat in the coding region of ATX2. Longer expansions result in earlier onset of the disease. There are four named isoforms.</p>
Gene ID:	6311
UniProt:	Q99700
Pathways:	Ribonucleoprotein Complex Subunit Organization

Application Details

Application Notes:	WB 1:300-5000 ELISA 1:500-1000 IHC-P 1:200-400 IHC-F 1:100-500 IF(IHC-P) 1:50-200 IF(IHC-F) 1:50-200 IF(ICC) 1:50-200
Restrictions:	For Research Use only

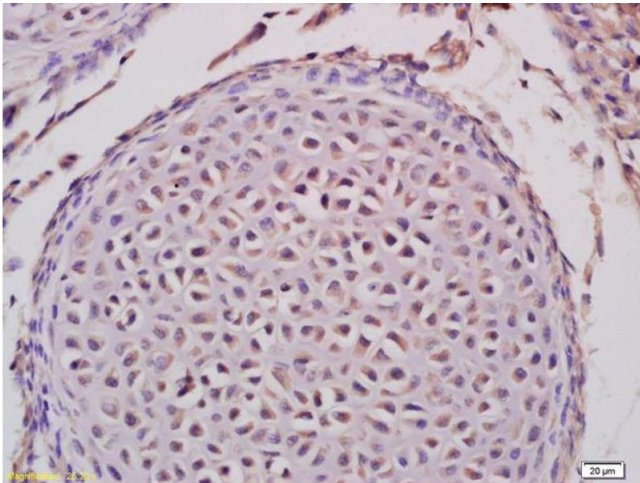
Handling

Format:	Liquid
Concentration:	1 µg/µL
Buffer:	0.01M TBS(pH 7.4) with 1 % BSA, 0.02 % Proclin300 and 50 % Glycerol.
Preservative:	ProClin
Precaution of Use:	This product contains ProClin: a POISONOUS AND HAZARDOUS SUBSTANCE, which should be handled by trained staff only.

Handling

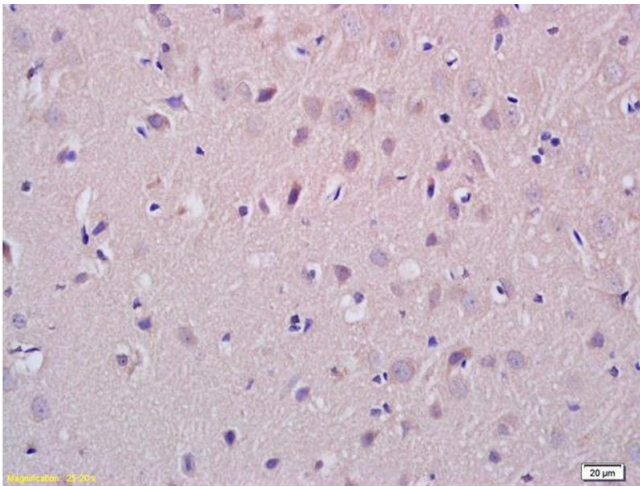
Storage:	4 °C,-20 °C
Storage Comment:	Shipped at 4°C. Store at -20°C for one year. Avoid repeated freeze/thaw cycles.
Expiry Date:	12 months

Images



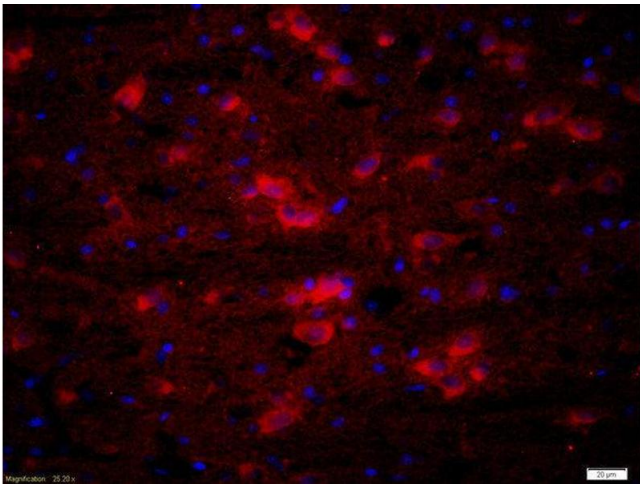
Immunohistochemistry

Image 1. Formalin-fixed and paraffin embedded mouse embryo tissue labeled with Anti-ATX2 Polyclonal Antibody, Unconjugated (ABIN872411) at 1:200, followed by conjugation to the secondary antibody and DAB staining



Immunohistochemistry

Image 2. Formalin-fixed and paraffin embedded rat brain tissue labeled with Anti-ATX2 Polyclonal Antibody, Unconjugated (ABIN872411) at 1:200, followed by conjugation to the secondary antibody and DAB staining



Immunofluorescence (Paraffin-embedded Sections)

Image 3. Formalin-fixed and paraffin-embedded rat brain labeled with Rabbit Anti-ATX2 Polyclonal Antibody, Unconjugated used at 1:200 dilution for 40 minutes at 37°C.