

Datasheet for ABIN872446  
**anti-PLEKHM2 antibody (AA 688-750)**[Go to Product page](#)

## 3 Images

## Overview

Quantity:	100 µL
Target:	PLEKHM2
Binding Specificity:	AA 688-750
Reactivity:	Mouse, Rat
Host:	Rabbit
Clonality:	Polyclonal
Conjugate:	This PLEKHM2 antibody is un-conjugated
Application:	ELISA, Western Blotting (WB), Immunohistochemistry (Paraffin-embedded Sections) (IHC (p)), Immunofluorescence (Cultured Cells) (IF (cc)), Immunofluorescence (Paraffin-embedded Sections) (IF (p)), Immunohistochemistry (Frozen Sections) (IHC (fro))

## Product Details

Immunogen:	KLH conjugated synthetic peptide derived from human PLEKHM2
Isotype:	IgG
Cross-Reactivity:	Mouse, Rat
Predicted Reactivity:	Human,Cow,Horse,Chicken
Purification:	Purified by Protein A.

## Target Details

Target:	PLEKHM2
---------	---------

## Target Details

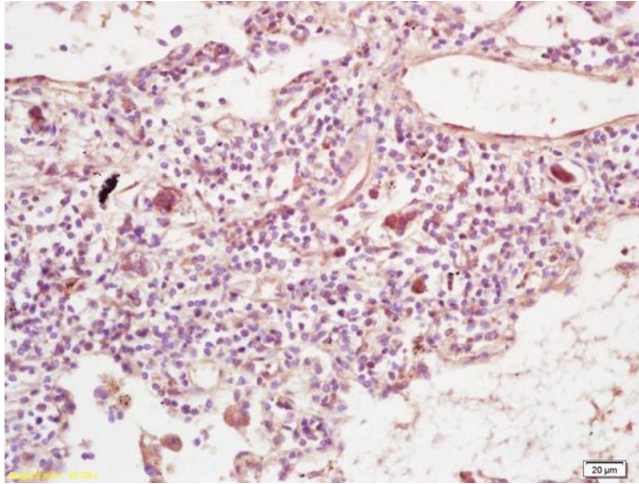
Alternative Name:	PLEKHM2 ( <a href="#">PLEKHM2 Products</a> )
Background:	<p>Synonyms: SKIP, Pleckstrin homology domain-containing family M member 2, PH domain-containing family M member 2, Salmonella-induced filaments A and kinesin-interacting protein, SifA and kinesin-interacting protein, PLEKHM2, KIAA0842</p> <p>Background: May play a role in the regulation of conventional kinesin activity. Required for maintenance of the Golgi apparatus organization. May play a role in membrane tubulation.</p>
Gene ID:	23207
UniProt:	<a href="#">Q8IWE5</a>

## Application Details

Application Notes:	<p>WB 1:300-5000</p> <p>ELISA 1:500-1000</p> <p>IHC-P 1:200-400</p> <p>IHC-F 1:100-500</p> <p>IF(IHC-P) 1:50-200</p> <p>IF(IHC-F) 1:50-200</p> <p>IF(ICC) 1:50-200</p>
Restrictions:	For Research Use only

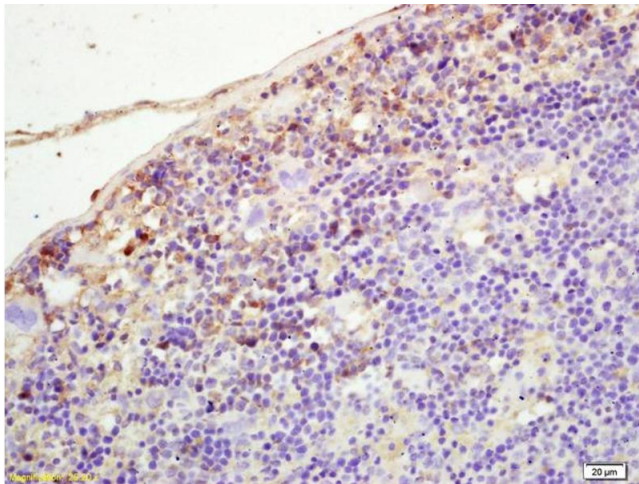
## Handling

Format:	Liquid
Concentration:	1 µg/µL
Buffer:	0.01M TBS( pH 7.4) with 1 % BSA, 0.02 % Proclin300 and 50 % Glycerol.
Preservative:	ProClin
Precaution of Use:	This product contains ProClin: a POISONOUS AND HAZARDOUS SUBSTANCE, which should be handled by trained staff only.
Storage:	4 °C,-20 °C
Storage Comment:	Shipped at 4°C. Store at -20°C for one year. Avoid repeated freeze/thaw cycles.
Expiry Date:	12 months



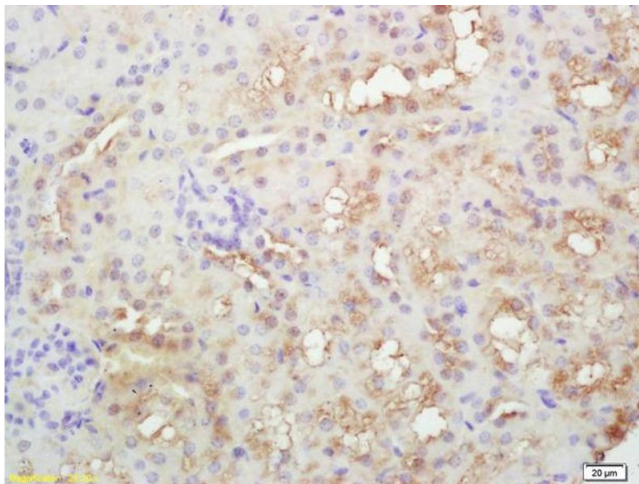
#### Immunohistochemistry

**Image 1.** Formalin-fixed and paraffin embedded human lung carcinoma labeled with Rabbit Anti PLEKHM2/SKIP Polyclonal Antibody, Unconjugated (ABIN872446) at 1:200 followed by conjugation to the secondary antibody and DAB staining



#### Immunohistochemistry

**Image 2.** Formalin-fixed and paraffin embedded mouse spleen labeled with Rabbit Anti PLEKHM2/SKIP Polyclonal Antibody, Unconjugated (ABIN872446) at 1:200 followed by conjugation to the secondary antibody and DAB staining



#### Immunohistochemistry

**Image 3.** Formalin-fixed and paraffin embedded rat kidney labeled with Rabbit Anti PLEKHM2/SKIP Polyclonal Antibody, Unconjugated (ABIN872446) at 1:200 followed by conjugation to the secondary antibody and DAB staining