

Datasheet for ABIN872454
anti-RERE antibody (AA 521-620)[Go to Product page](#)

1 Image

Overview

Quantity:	100 µL
Target:	RERE
Binding Specificity:	AA 521-620
Reactivity:	Human, Mouse
Host:	Rabbit
Clonality:	Polyclonal
Conjugate:	This RERE antibody is un-conjugated
Application:	Western Blotting (WB), ELISA, Immunofluorescence (Cultured Cells) (IF (cc)), Immunofluorescence (Paraffin-embedded Sections) (IF (p)), Immunohistochemistry (Paraffin- embedded Sections) (IHC (p)), Immunohistochemistry (Frozen Sections) (IHC (fro))

Product Details

Immunogen:	KLH conjugated synthetic peptide derived from human RERE
Isotype:	IgG
Cross-Reactivity:	Human, Mouse
Predicted Reactivity:	Rat,Dog,Cow,Horse,Chicken
Purification:	Purified by Protein A.

Target Details

Target:	RERE
---------	------

Target Details

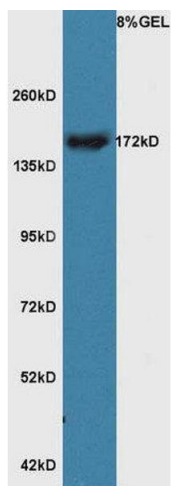
Alternative Name:	RERE (RERE Products)
Background:	<p>Synonyms: ARG, ARP, DNB1, ATN1L, Arginine-glutamic acid dipeptide repeats protein, Atrophin-1-like protein, Atrophin-1-related protein, RERE, KIAA0458</p> <p>Background: Plays a role as a transcriptional repressor during development. May play a role in the control of cell survival. Overexpression of RERE recruits BAX to the nucleus particularly to POD and triggers caspase-3 activation, leading to cell death.</p>
Gene ID:	473
UniProt:	Q9P2R6
Pathways:	Protein targeting to Nucleus

Application Details

Application Notes:	<p>WB 1:300-5000</p> <p>ELISA 1:500-1000</p> <p>IHC-P 1:200-400</p> <p>IHC-F 1:100-500</p> <p>IF(IHC-P) 1:50-200</p> <p>IF(IHC-F) 1:50-200</p> <p>IF(ICC) 1:50-200</p>
Restrictions:	For Research Use only

Handling

Format:	Liquid
Concentration:	1 µg/µL
Buffer:	0.01M TBS(pH 7.4) with 1 % BSA, 0.02 % Proclin300 and 50 % Glycerol.
Preservative:	ProClin
Precaution of Use:	This product contains ProClin: a POISONOUS AND HAZARDOUS SUBSTANCE, which should be handled by trained staff only.
Storage:	4 °C, -20 °C
Storage Comment:	Shipped at 4°C. Store at -20°C for one year. Avoid repeated freeze/thaw cycles.
Expiry Date:	12 months



Western Blotting

Image 1. Lane 1: A549 cell lysates probed with Rabbit Anti-RERE Polyclonal Antibody, Unconjugated (ABIN872454) at 1:300 overnight at 4 °C. Followed by conjugation to secondary antibody at 1:5000 for 90 min at 37 °C.