

Datasheet for ABIN872457
anti-WAPAL antibody (AA 731-830)[Go to Product page](#)

1 Image

Overview

Quantity:	100 µL
Target:	WAPAL
Binding Specificity:	AA 731-830
Reactivity:	Human
Host:	Rabbit
Clonality:	Polyclonal
Conjugate:	This WAPAL antibody is un-conjugated
Application:	ELISA, Western Blotting (WB), Immunohistochemistry (Paraffin-embedded Sections) (IHC (p)), Immunofluorescence (Cultured Cells) (IF (cc)), Immunofluorescence (Paraffin-embedded Sections) (IF (p)), Immunohistochemistry (Frozen Sections) (IHC (fro))

Product Details

Immunogen:	KLH conjugated synthetic peptide derived from human WAPL
Isotype:	IgG
Cross-Reactivity:	Human
Predicted Reactivity:	Mouse,Rat,Dog,Cow,Pig,Horse,Chicken
Purification:	Purified by Protein A.

Target Details

Target:	WAPAL
---------	-------

Target Details

Alternative Name:	WAPL (WAPAL Products)
Background:	<p>Synonyms: FOE, WAPAL, KIAA0261, Wings apart-like protein homolog, Friend of EBNA2 protein, WAPL</p> <p>Background: Regulator of sister chromatid cohesion in mitosis which negatively regulates cohesin association with chromatin. Involved in both sister chromatid cohesion during interphase and sister-chromatid resolution during early stages of mitosis. Couples DNA replication to sister chromatid cohesion. Cohesion ensures that chromosome partitioning is accurate in both meiotic and mitotic cells and plays an important role in DNA repair.</p>
Gene ID:	23063
UniProt:	Q7Z5K2
Pathways:	Chromatin Binding

Application Details

Application Notes:	WB 1:300-5000 ELISA 1:500-1000 IHC-P 1:200-400 IHC-F 1:100-500 IF(IHC-P) 1:50-200 IF(IHC-F) 1:50-200 IF(ICC) 1:50-200
Restrictions:	For Research Use only

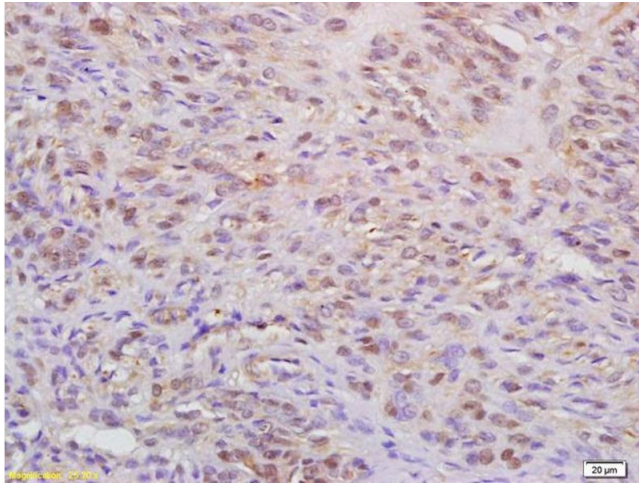
Handling

Format:	Liquid
Concentration:	1 µg/µL
Buffer:	0.01M TBS(pH 7.4) with 1 % BSA, 0.02 % Proclin300 and 50 % Glycerol.
Preservative:	ProClin
Precaution of Use:	This product contains ProClin: a POISONOUS AND HAZARDOUS SUBSTANCE, which should be handled by trained staff only.
Storage:	4 °C,-20 °C
Storage Comment:	Shipped at 4°C. Store at -20°C for one year. Avoid repeated freeze/thaw cycles.

Handling

Expiry Date: 12 months

Images



Immunohistochemistry

Image 1. Formalin-fixed and paraffin embedded human cervical carcinoma labeled with Anti-WAPL Polyclonal Antibody, Unconjugated (ABIN872457) at 1:200 followed by conjugation to the secondary antibody