

Datasheet for ABIN872485
anti-RCL antibody (AA 101-174)[Go to Product page](#)

2 Images

Overview

Quantity:	100 µL
Target:	RCL (C6orf108)
Binding Specificity:	AA 101-174
Reactivity:	Human, Rat
Host:	Rabbit
Clonality:	Polyclonal
Conjugate:	This RCL antibody is un-conjugated
Application:	Western Blotting (WB), ELISA, Immunofluorescence (Paraffin-embedded Sections) (IF (p)), Immunofluorescence (Cultured Cells) (IF (cc)), Immunohistochemistry (Paraffin-embedded Sections) (IHC (p)), Immunohistochemistry (Frozen Sections) (IHC (fro))

Product Details

Immunogen:	KLH conjugated synthetic peptide derived from human RCL/c Myc responsive
Isotype:	IgG
Cross-Reactivity:	Human, Rat
Predicted Reactivity:	Mouse,Dog,Pig,Horse,Rabbit
Purification:	Purified by Protein A.

Target Details

Target:	RCL (C6orf108)
---------	----------------

Target Details

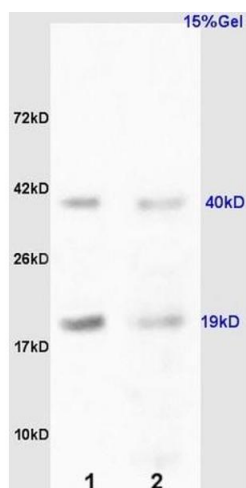
Alternative Name:	RCL (C6orf108 Products)
Background:	<p>Synonyms: RCL, C6orf108, dJ330M21.3, 2'-deoxynucleoside 5'-phosphate N-hydrolase 1, c-Myc-responsive protein RCL, DNPH1</p> <p>Background: Catalyzes the cleavage of the N-glycosidic bond of deoxyribonucleoside 5'-monophosphates to yield deoxyribose 5-phosphate and a purine or pyrimidine base.</p> <p>Deoxyribonucleoside 5'-monophosphates containing purine bases are preferred to those containing pyrimidine bases.</p>
Gene ID:	10591
UniProt:	O43598

Application Details

Application Notes:	<p>WB 1:300-5000</p> <p>ELISA 1:500-1000</p> <p>IHC-P 1:200-400</p> <p>IHC-F 1:100-500</p> <p>IF(IHC-P) 1:50-200</p> <p>IF(IHC-F) 1:50-200</p> <p>IF(ICC) 1:50-200</p>
Restrictions:	For Research Use only

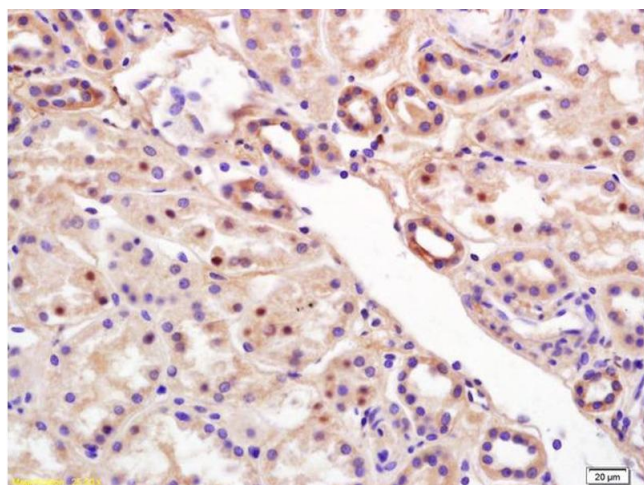
Handling

Format:	Liquid
Concentration:	1 µg/µL
Buffer:	0.01M TBS(pH 7.4) with 1 % BSA, 0.02 % Proclin300 and 50 % Glycerol.
Preservative:	ProClin
Precaution of Use:	This product contains ProClin: a POISONOUS AND HAZARDOUS SUBSTANCE, which should be handled by trained staff only.
Storage:	4 °C,-20 °C
Storage Comment:	Shipped at 4°C. Store at -20°C for one year. Avoid repeated freeze/thaw cycles.
Expiry Date:	12 months



SDS-PAGE

Image 1. L1 rat kidney lysates L2 rat liver lysates probed with Anti RCL/c Myc responsive Polyclonal Antibody, Unconjugated (ABIN872485) at 1:200 overnight at 4 °C. Followed by conjugation to secondary antibody at 1:3000 for 90 min at 37 °C. Predicted band 19kD. Observed band size:19kD,40kD.



Immunohistochemistry

Image 2. Formalin-fixed and paraffin embedded human kidney labeled with Rabbit Anti RCL/c Myc responsive Polyclonal Antibody, Unconjugated (ABIN872485) at 1:200 followed by conjugation to the secondary antibody and DAB staining