

Datasheet for ABIN872576
anti-FAM3C antibody (AA 151-227)[Go to Product page](#)

2 Images

Overview

Quantity:	100 µL
Target:	FAM3C
Binding Specificity:	AA 151-227
Reactivity:	Human, Rat
Host:	Rabbit
Clonality:	Polyclonal
Conjugate:	This FAM3C antibody is un-conjugated
Application:	Western Blotting (WB), ELISA, Immunofluorescence (Cultured Cells) (IF (cc)), Immunofluorescence (Paraffin-embedded Sections) (IF (p)), Immunohistochemistry (Paraffin-embedded Sections) (IHC (p)), Immunohistochemistry (Frozen Sections) (IHC (fro))

Product Details

Immunogen:	KLH conjugated synthetic peptide derived from human FAM3C
Isotype:	IgG
Cross-Reactivity:	Human, Rat
Predicted Reactivity:	Mouse,Dog,Cow,Pig,Horse,Chicken
Purification:	Purified by Protein A.

Target Details

Target:	FAM3C
---------	-------

Target Details

Alternative Name:	FAM3C (FAM3C Products)
Background:	<p>Synonyms: Fam3c, FAM3C_HUMAN, family with sequence similarity 3, member C, GS3786, ILEI, Interleukin-like EMT inducer, Predicted osteoblast protein, Protein FAM3C.</p> <p>Background: ILEI is a 227 amino acid, ubiquitously expressed protein containing an amino-terminal signal peptide. Elevated levels of ILEI translation are observed in oncogenic, Ras-transformed mammary epithelial cells and epithelial to mesenchymal transition (Emt) as well as tumor growth and metastasis. Also, overexpression of ILEI results in loss of ZO-1, a protein involved in tight junctions, and expression of cytoplasmic E-cadherin, which has been shown to influence loss of polarity and invasiveness. Due to this evidence, it is suspected that ILEI cooperates with oncogenic Ras to cause TGF-independent Emt and its overexpression is correlated with the invasion, metastasis and survival in a variety of cancers.</p>
Gene ID:	10447

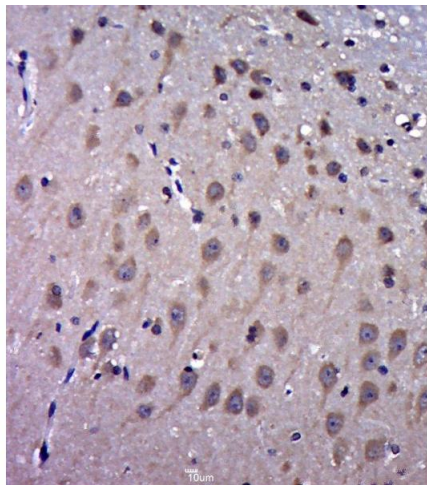
Application Details

Application Notes:	WB 1:300-5000 ELISA 1:500-1000 IHC-P 1:200-400 IHC-F 1:100-500 IF(IHC-P) 1:50-200 IF(IHC-F) 1:50-200 IF(ICC) 1:50-200
Restrictions:	For Research Use only

Handling

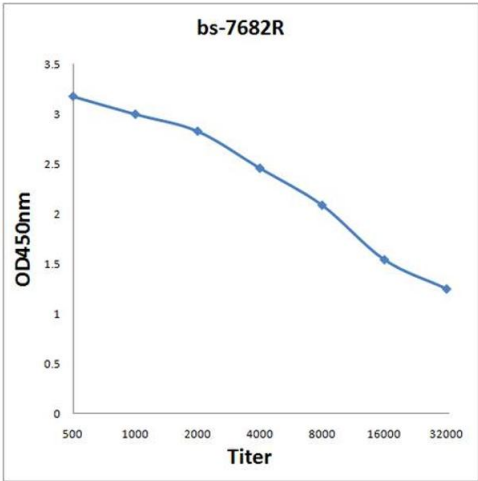
Format:	Liquid
Concentration:	1 µg/µL
Buffer:	0.01M TBS(pH 7.4) with 1 % BSA, 0.02 % Proclin300 and 50 % Glycerol.
Preservative:	ProClin
Precaution of Use:	This product contains ProClin: a POISONOUS AND HAZARDOUS SUBSTANCE, which should be handled by trained staff only.
Storage:	4 °C,-20 °C
Storage Comment:	Shipped at 4°C. Store at -20°C for one year. Avoid repeated freeze/thaw cycles.

Expiry Date: 12 months



Immunohistochemistry (Paraffin-embedded Sections)

Image 1. Paraformaldehyde-fixed, paraffin embedded rat brain, Antigen retrieval by boiling in sodium citrate buffer (pH6.0) for 15min, Block endogenous peroxidase by 3% hydrogen peroxide for 20 minutes, Blocking buffer (normal goat serum) at 37°C for 30min, Antibody incubation with FAM3C Polyclonal Antibody, Unconjugated at 1:400 overnight at 4°C, followed by a conjugated secondary for 20 minutes and DAB staining.



ELISA

Image 2. Antigen: 0.2 µg/100 µL Primary: Antiserum, 1:500, 1:1000, 1:2000, 1:4000, 1:8000, 1:16000, 1:32000; Secondary: HRP conjugated Goat-Anti-Rabbit IgG at 1: 5000; TMB staining; Read the data in MicroplateReader by 450