



Datasheet for ABIN872619

anti-14-3-3 zeta antibody (AA 51-150)



[Go to Product page](#)

2 Images

Overview

Quantity:	100 µL
Target:	14-3-3 zeta (YWHAZ)
Binding Specificity:	AA 51-150
Reactivity:	Human, Mouse, Rat
Host:	Rabbit
Clonality:	Polyclonal
Conjugate:	This 14-3-3 zeta antibody is un-conjugated
Application:	Western Blotting (WB), ELISA, Immunohistochemistry (Paraffin-embedded Sections) (IHC (p)), Flow Cytometry (FACS), Immunofluorescence (Cultured Cells) (IF (cc)), Immunofluorescence (Paraffin-embedded Sections) (IF (p)), Immunohistochemistry (Frozen Sections) (IHC (fro))

Product Details

Immunogen:	KLH conjugated synthetic peptide derived from human 14-3-3 zeta/delta
Isotype:	IgG
Cross-Reactivity:	Human, Mouse, Rat
Predicted Reactivity:	Dog,Cow,Horse,Chicken,Rabbit
Purification:	Purified by Protein A.

Target Details

Target:	14-3-3 zeta (YWHAZ)
---------	---------------------

Target Details

Alternative Name: 14-3-3 Zeta+delta ([YWHAZ Products](#))

Background: Synonyms: HEL4, YWHAD, KCIP-1, HEL-S-3, 14-3-3-zeta, 14-3-3 protein zeta/delta, Protein kinase C inhibitor protein 1, YWHAZ

Background: Adapter protein implicated in the regulation of a large spectrum of both general and specialized signaling pathways. Binds to a large number of partners, usually by recognition of a phosphoserine or phosphothreonine motif. Binding generally results in the modulation of the activity of the binding partner.

Gene ID: 7534

UniProt: [P63104](#)

Pathways: [Apoptosis](#), [Hormone Transport](#), [Myometrial Relaxation and Contraction](#), [Regulation of Leukocyte Mediated Immunity](#), [Positive Regulation of Immune Effector Process](#), [Synaptic Membrane](#), [Production of Molecular Mediator of Immune Response](#), [Maintenance of Protein Location](#)

Application Details

Application Notes: WB 1:300-5000
ELISA 1:500-1000
FCM 1:20-100
IHC-P 1:200-400
IHC-F 1:100-500
IF(IHC-P) 1:50-200
IF(IHC-F) 1:50-200
IF(ICC) 1:50-200

Restrictions: For Research Use only

Handling

Format: Liquid

Concentration: 1 µg/µL

Buffer: 0.01M TBS(pH 7.4) with 1 % BSA, 0.02 % Proclin300 and 50 % Glycerol.

Preservative: ProClin

Precaution of Use: This product contains ProClin: a POISONOUS AND HAZARDOUS SUBSTANCE, which should be handled by trained staff only.

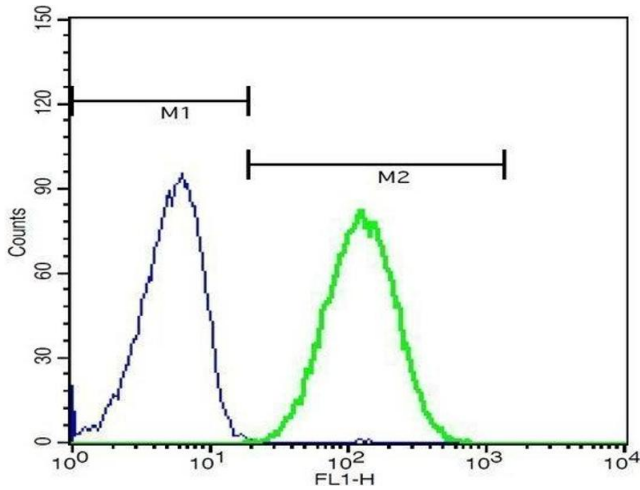
Handling

Storage: 4 °C, -20 °C

Storage Comment: Shipped at 4°C. Store at -20°C for one year. Avoid repeated freeze/thaw cycles.

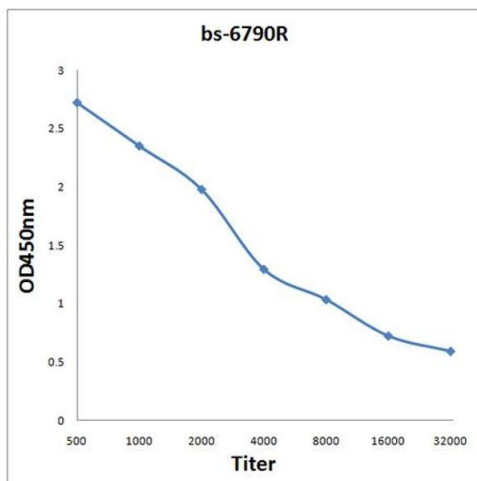
Expiry Date: 12 months

Images



Flow Cytometry

Image 1. Mouse splenocytes probed with Rabbit Anti-14-3-3 zeta+delta Polyclonal Antibody, FITC Conjugated .



ELISA

Image 2. Antigen: 0.2 µg/100 µL Primary: Antiserum, 1:500, 1:1000, 1:2000, 1:4000, 1:8000, 1:16000, 1:32000; Secondary: HRP conjugated Goat-Anti-Rabbit IgG at 1: 5000; TMB staining; Read the data in MicroplateReader by 450