



[Go to Product page](#)

Datasheet for ABIN872637

anti-COLEC10 antibody (AA 151-230)

2 Images

Overview

Quantity:	100 µL
Target:	COLEC10
Binding Specificity:	AA 151-230
Reactivity:	Rat
Host:	Rabbit
Clonality:	Polyclonal
Conjugate:	This COLEC10 antibody is un-conjugated
Application:	Western Blotting (WB), ELISA, Immunofluorescence (Cultured Cells) (IF (cc)), Immunofluorescence (Paraffin-embedded Sections) (IF (p)), Immunohistochemistry (Paraffin-embedded Sections) (IHC (p)), Immunohistochemistry (Frozen Sections) (IHC (fro))

Product Details

Immunogen:	KLH conjugated synthetic peptide derived from human COLEC10
Isotype:	IgG
Cross-Reactivity:	Rat
Predicted Reactivity:	Human,Mouse,Dog,Cow,Pig,Horse
Purification:	Purified by Protein A.

Target Details

Target:	COLEC10
---------	---------

Target Details

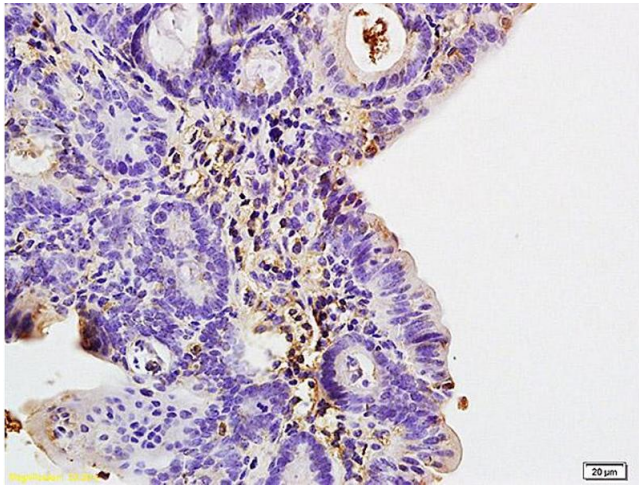
Alternative Name:	COLEC10 (COLEC10 Products)
Background:	Synonyms: CLL1, Collectin-10, Collectin liver protein 1, CL-L1, Collectin-34, CL-34, COLEC10, UNQ366/PRO702 Background: Lectin that binds to various sugars: galactose > mannose = fucose > N-acetylglucosamine > N-acetylgalactosamine.
Gene ID:	10584
UniProt:	Q9Y6Z7

Application Details

Application Notes:	WB 1:300-5000 ELISA 1:500-1000 IHC-P 1:200-400 IHC-F 1:100-500 IF(IHC-P) 1:50-200 IF(IHC-F) 1:50-200 IF(ICC) 1:50-200
Restrictions:	For Research Use only

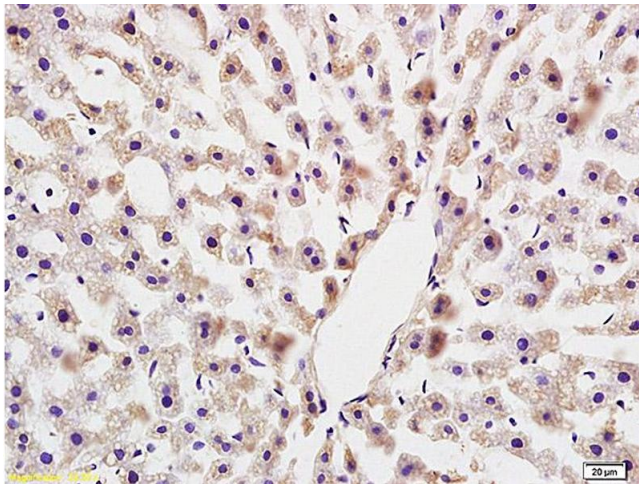
Handling

Format:	Liquid
Concentration:	1 µg/µL
Buffer:	0.01M TBS(pH 7.4) with 1 % BSA, 0.02 % Proclin300 and 50 % Glycerol.
Preservative:	ProClin
Precaution of Use:	This product contains ProClin: a POISONOUS AND HAZARDOUS SUBSTANCE, which should be handled by trained staff only.
Storage:	4 °C,-20 °C
Storage Comment:	Shipped at 4°C. Store at -20°C for one year. Avoid repeated freeze/thaw cycles.
Expiry Date:	12 months



Immunohistochemistry

Image 1. Formalin-fixed and paraffin embedded rat liver labeled with Anti COLEC10(LIVER) Polyclonal Antibody, Unconjugated (ABIN872637) at 1:200 followed by conjugation to the secondary antibody and DAB staining



Immunohistochemistry

Image 2. Formalin-fixed and paraffin embedded rat colitis labeled with Anti COLEC10(LIVER) Polyclonal Antibody, Unconjugated (ABIN872637) at 1:200 followed by conjugation to the secondary antibody and DAB staining