



Datasheet for ABIN872663
anti-HAX1 antibody (AA 191-279)



[Go to Product page](#)

1 Image

Overview

Quantity:	100 µL
Target:	HAX1
Binding Specificity:	AA 191-279
Reactivity:	Human
Host:	Rabbit
Clonality:	Polyclonal
Conjugate:	This HAX1 antibody is un-conjugated
Application:	Western Blotting (WB), ELISA, Immunofluorescence (Cultured Cells) (IF (cc)), Immunofluorescence (Paraffin-embedded Sections) (IF (p)), Immunohistochemistry (Paraffin-embedded Sections) (IHC (p)), Immunohistochemistry (Frozen Sections) (IHC (fro))

Product Details

Immunogen:	KLH conjugated synthetic peptide derived from human HAX1
Isotype:	IgG
Predicted Reactivity:	Human,Mouse,Rat,Dog,Cow,Pig,Horse,Rabbit
Purification:	Purified by Protein A.

Target Details

Target:	HAX1
Alternative Name:	HAX1 (HAX1 Products)

Target Details

Background: Synonyms: HAX 1, Hax1a, HCLS1 and PKD2 associated protein, HCLS1 associated protein, HCLS1 associated protein X 1, HCLSBP1, HS 1 associated protein X 1, HS 1 binding protein, HS1 associating protein X 1, HS1 binding protein 1, HS1 binding protein, HS1BP1, SCN3.
Background: RelevanceHAX1 associates with HS1, binding to its N-terminal region. It is also known to associate with PKD2 (involved in polycystic kidney disease) and with cortactin/EMS1. HAX1 is also reported to bind to hairpin structures in vimentin and DNA polymerase beta mRNAs, so may play a role in mRNA stability and transport. It may also function in promoting cell survival. Defects in HAX1 are the cause of autosomal recessive severe congenital neutropenia 3 (SCN3) also called Kostmann disease.

Gene ID: 10456

Pathways: [Regulation of Actin Filament Polymerization](#)

Application Details

Application Notes: WB 1:300-5000
ELISA 1:500-1000
IHC-P 1:200-400
IHC-F 1:100-500
IF(IHC-P) 1:50-200
IF(IHC-F) 1:50-200
IF(ICC) 1:50-200

Restrictions: For Research Use only

Handling

Format: Liquid

Concentration: 1 µg/µL

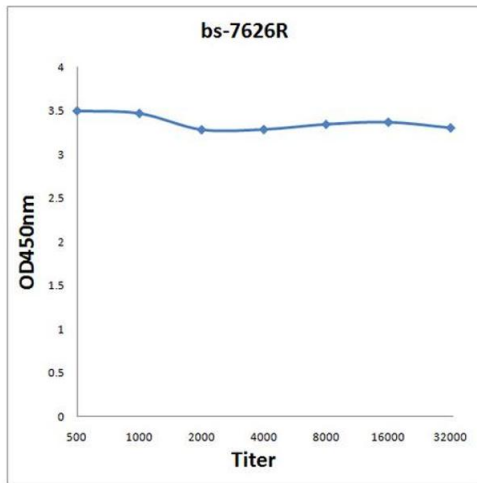
Buffer: 0.01M TBS(pH 7.4) with 1 % BSA, 0.02 % Proclin300 and 50 % Glycerol.

Preservative: ProClin

Precaution of Use: This product contains ProClin: a POISONOUS AND HAZARDOUS SUBSTANCE, which should be handled by trained staff only.

Storage: 4 °C,-20 °C

Storage Comment: Shipped at 4°C. Store at -20°C for one year. Avoid repeated freeze/thaw cycles.



ELISA

Image 1. Antigen: 0.2 µg/100 µL Primary: Antiserum, 1:500, 1:1000, 1:2000, 1:4000, 1:8000, 1:16000, 1:32000; Secondary: HRP conjugated Goat Anti-Rabbit IgG at 1: 5000; TMB staining; Read the data in MicroplateReader by 450nm.