

Datasheet for ABIN872666

anti-PTPRCAP antibody (AA 125-206)



[Go to Product page](#)

1 Image

1 Publication

Overview

Quantity:	100 µL
Target:	PTPRCAP
Binding Specificity:	AA 125-206
Reactivity:	Human
Host:	Rabbit
Clonality:	Polyclonal
Conjugate:	This PTPRCAP antibody is un-conjugated
Application:	ELISA, Immunohistochemistry (Paraffin-embedded Sections) (IHC (p)), Flow Cytometry (FACS), Immunofluorescence (Cultured Cells) (IF (cc)), Immunofluorescence (Paraffin-embedded Sections) (IF (p)), Immunohistochemistry (Frozen Sections) (IHC (fro))

Product Details

Immunogen:	KLH conjugated synthetic peptide derived from human LPAP
Isotype:	IgG
Cross-Reactivity:	Human
Predicted Reactivity:	Mouse,Rat,Dog,Cow,Sheep,Pig
Purification:	Purified by Protein A.

Target Details

Target:	PTPRCAP
---------	---------

Target Details

Alternative Name:	LPAP (PTPRCAP Products)
Background:	<p>Synonyms: PTPRCAP: LPAP: LyPAP: Mature chain: Variant: Lymphocyte Phosphatase-Associated Phosphoprotein, PTCA_HUMAN.</p> <p>Background: Lymphocyte phosphatase-associate Phosphoprotein (LPAP) is a transmembrane phosphoprotein of 32 kD, which is only stable when expressed in the presence of the CD45 glycoprotein. It is expressed on both resting and activated T and B lymphocyte, NK cells and thymocytes. Terminally differentiated plasma cells, granulocytes and monocytes do not express LPAP.</p>
Gene ID:	51205

Application Details

Application Notes:	<p>ELISA 1:500-1000</p> <p>FCM 1:20-100</p> <p>IHC-P 1:200-400</p> <p>IHC-F 1:100-500</p> <p>IF(IHC-P) 1:50-200</p> <p>IF(IHC-F) 1:50-200</p> <p>IF(ICC) 1:50-200</p>
Restrictions:	For Research Use only

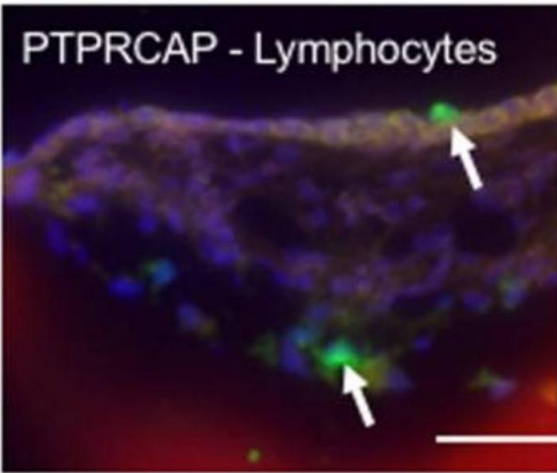
Handling

Format:	Liquid
Concentration:	1 µg/µL
Buffer:	0.01M TBS(pH 7.4) with 1 % BSA, 0.02 % Proclin300 and 50 % Glycerol.
Preservative:	ProClin
Precaution of Use:	This product contains ProClin: a POISONOUS AND HAZARDOUS SUBSTANCE, which should be handled by trained staff only.
Storage:	4 °C,-20 °C
Storage Comment:	Shipped at 4°C. Store at -20°C for one year. Avoid repeated freeze/thaw cycles.
Expiry Date:	12 months

Publications

Product cited in: Ryan, Nasamran, Pak, Draf, Fisch, Webster, Kurabi: "Single-Cell Transcriptomes Reveal a Complex Cellular Landscape in the Middle Ear and Differential Capacities for Acute Response to Infection." in: **Frontiers in genetics**, Vol. 11, pp. 358, (2020) ([PubMed](#)).

Images



Immunohistochemistry (Paraffin-embedded Sections)

Image 1. Immunohistochemical localization of select proteins encoded by marker genes, used to identify cell types in the ME mucosa. Paraffin sections were labeled with phalloidin (red), DAPI (blue) and Alexa 488-conjugated secondary antibodies (green). The upper six panels represent marker genes used to identify cell types known to be present in the ME. The three lower panels represent less expected findings: DEFB1 expression in basal epithelial cells; AREG indicating type II lymphoid cells; and ECRG4, often expressed in epithelia, in stromal cells. Scale bars represents 100 µm. Source: PMID32351546