

Datasheet for ABIN872742  
**anti-DEDD antibody (AA 151-250)**[Go to Product page](#)

## 4 Images

## Overview

Quantity:	100 µL
Target:	DEDD
Binding Specificity:	AA 151-250
Reactivity:	Human, Rat
Host:	Rabbit
Clonality:	Polyclonal
Conjugate:	This DEDD antibody is un-conjugated
Application:	Western Blotting (WB), ELISA, Immunofluorescence (Cultured Cells) (IF (cc)), Immunofluorescence (Paraffin-embedded Sections) (IF (p)), Immunohistochemistry (Frozen Sections) (IHC (fro)), Immunohistochemistry (Paraffin-embedded Sections) (IHC (p))

## Product Details

Immunogen:	KLH conjugated synthetic peptide derived from human DEDD1
Isotype:	IgG
Cross-Reactivity:	Human, Rat
Predicted Reactivity:	Mouse,Cow,Pig,Chicken
Purification:	Purified by Protein A.

## Target Details

Target:	DEDD
---------	------

## Target Details

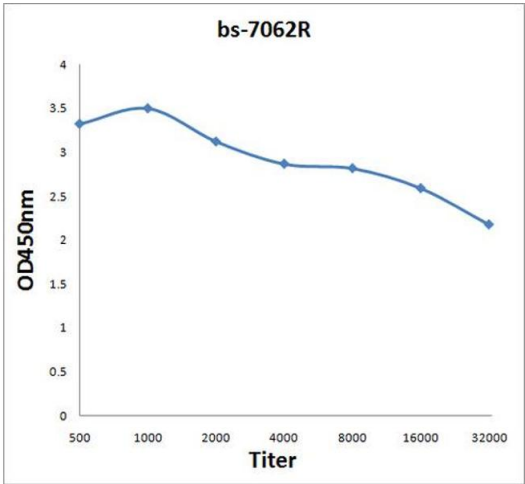
Alternative Name:	Dedd1 ( <a href="#">DEDD Products</a> )
Background:	<p>Synonyms: DEFT, KE05, DEDD1, FLDED1, CASP8IP1, Death effector domain-containing protein, DEDPro1, Death effector domain-containing testicular molecule, FLDED-1, DEDD</p> <p>Background: A scaffold protein that directs CASP3 to certain substrates and facilitates their ordered degradation during apoptosis. May also play a role in mediating CASP3 cleavage of KRT18. Regulates degradation of intermediate filaments during apoptosis. May play a role in the general transcription machinery in the nucleus and might be an important regulator of the activity of GTF3C3. Inhibits DNA transcription in vitro (By similarity).</p>
Gene ID:	9191
UniProt:	<a href="#">O75618</a>

## Application Details

Application Notes:	WB 1:300-5000 ELISA 1:500-1000 IHC-P 1:200-400 IHC-F 1:100-500 IF(IHC-P) 1:50-200 IF(IHC-F) 1:50-200 IF(ICC) 1:50-200
Restrictions:	For Research Use only

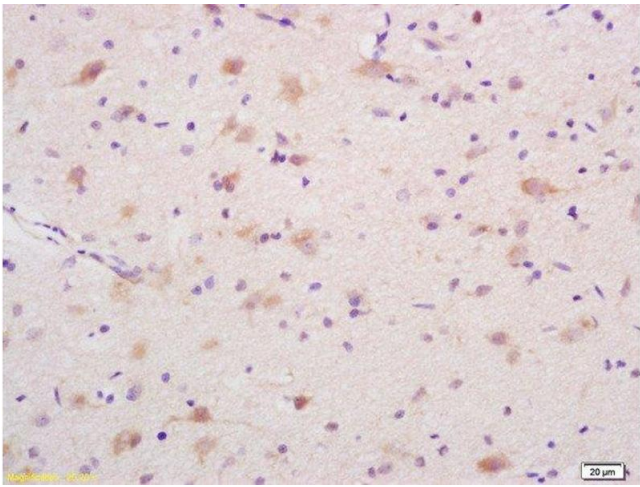
## Handling

Format:	Liquid
Concentration:	1 µg/µL
Buffer:	0.01M TBS( pH 7.4) with 1 % BSA, 0.02 % Proclin300 and 50 % Glycerol.
Preservative:	ProClin
Precaution of Use:	This product contains ProClin: a POISONOUS AND HAZARDOUS SUBSTANCE, which should be handled by trained staff only.
Storage:	4 °C,-20 °C
Storage Comment:	Shipped at 4°C. Store at -20°C for one year. Avoid repeated freeze/thaw cycles.
Expiry Date:	12 months



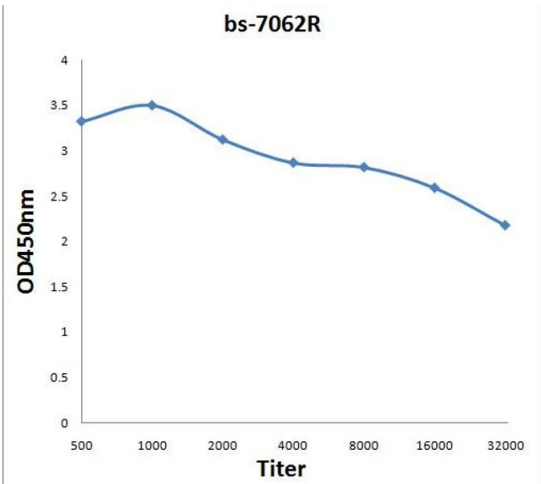
ELISA

**Image 1.** Antigen: 0.2 µg/100 µL Primary: Antiserum, 1:500, 1:1000, 1:2000, 1:4000, 1:8000, 1:16000, 1:32000; Secondary: HRP conjugated Goat-Anti-Rabbit IgG at 1: 5000; TMB staining; Read the data in MicroplateReader by 450



Immunohistochemistry (Paraffin-embedded Sections)

**Image 2.** Formalin-fixed and paraffin embedded rat brain labeled with Rabbit Anti DEDD1 Polyclonal Antibody, Unconjugated at 1:200 followed by conjugation to the secondary antibody and DAB staining



ELISA

**Image 3.** Formalin-fixed and paraffin embedded rat brain labeled with Rabbit Anti DEDD1 Polyclonal Antibody, Unconjugated (ABIN872742) at 1:200 followed by conjugation to the secondary antibody and DAB staining

Please check the [product details page](#) for more images. Overall 4 images are available for ABIN872742.