

Datasheet for ABIN872790
anti-RNLS antibody (AA 201-300)[Go to Product page](#)

2 Images

Overview

Quantity:	100 µL
Target:	RNLS
Binding Specificity:	AA 201-300
Reactivity:	Human, Mouse
Host:	Rabbit
Clonality:	Polyclonal
Conjugate:	This RNLS antibody is un-conjugated
Application:	Western Blotting (WB), ELISA, Immunofluorescence (Cultured Cells) (IF (cc)), Immunofluorescence (Paraffin-embedded Sections) (IF (p)), Immunohistochemistry (Paraffin- embedded Sections) (IHC (p)), Immunohistochemistry (Frozen Sections) (IHC (fro))

Product Details

Immunogen:	KLH conjugated synthetic peptide derived from human Renalase
Isotype:	IgG
Cross-Reactivity:	Human, Mouse
Predicted Reactivity:	Rat,Dog,Pig,Horse,Rabbit
Purification:	Purified by Protein A.

Target Details

Target:	RNLS
---------	------

Target Details

Alternative Name:	Renalase (RNLS Products)
Background:	<p>Synonyms: C10orf59, RENALASE, Monoamine oxidase-C, MAO-C, alpha-NAD(P)H oxidase/anomerase, RNLS</p> <p>Background: Catalyzes the oxidation of the less abundant alpha-NAD(P)H isoform to form beta-NAD(P)(+). The enzyme hormone is secreted by the kidney, and circulates in blood and modulates cardiac function and systemic blood pressure. Lowers blood pressure in vivo by decreasing cardiac contractility and heart rate and preventing a compensatory increase in peripheral vascular tone, suggesting a causal link to the increased plasma catecholamine and heightened cardiovascular risk. High concentrations of catecholamines activate plasma renalase and promotes its secretion and synthesis.</p>
Gene ID:	55328
UniProt:	Q5VYX0

Application Details

Application Notes:	WB 1:300-5000 ELISA 1:500-1000 IHC-P 1:200-400 IHC-F 1:100-500 IF(IHC-P) 1:50-200 IF(IHC-F) 1:50-200 IF(ICC) 1:50-200
Restrictions:	For Research Use only

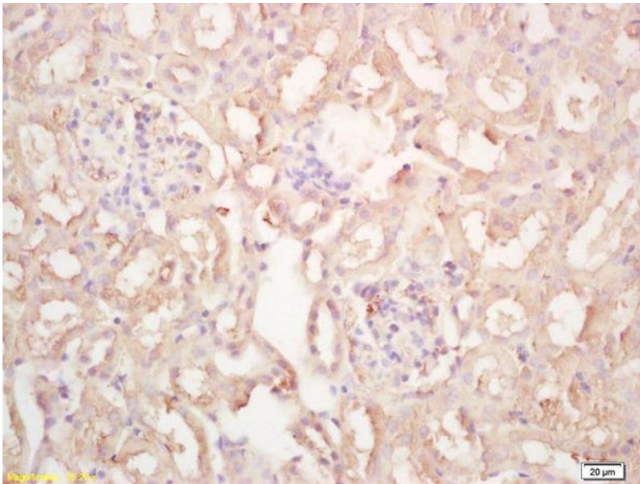
Handling

Format:	Liquid
Concentration:	1 µg/µL
Buffer:	0.01M TBS(pH 7.4) with 1 % BSA, 0.02 % Proclin300 and 50 % Glycerol.
Preservative:	ProClin
Precaution of Use:	This product contains ProClin: a POISONOUS AND HAZARDOUS SUBSTANCE, which should be handled by trained staff only.
Storage:	4 °C,-20 °C

Handling

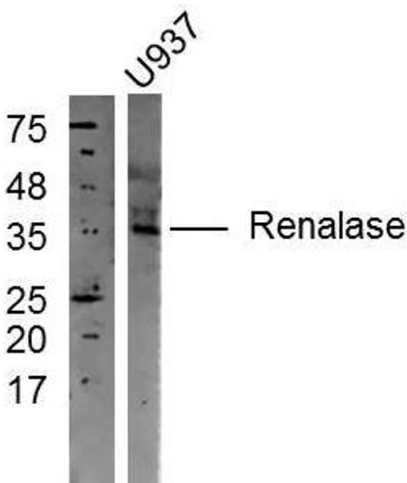
Storage Comment:	Shipped at 4°C. Store at -20°C for one year. Avoid repeated freeze/thaw cycles.
Expiry Date:	12 months

Images



Immunohistochemistry

Image 1. Formalin-fixed and paraffin embedded mouse kidney labeled with Rabbit Anti Renalase Polyclonal Antibody, Unconjugated (ABIN872790) at 1:200 followed by conjugation to the secondary antibody and DAB staining



Western Blotting

Image 2. U937 cell lysates probed with Rabbit Anti-Renalase Polyclonal Antibody, Unconjugated at 1:300 in 4°C overnight. Followed by conjugation to secondary antibody - HRP) at 1:5000 for 90min at 37°C.