

Datasheet for ABIN872796

anti-Septin 1 antibody (AA 161-260)

4 Images

[Go to Product page](#)

Overview

Quantity:	100 µL
Target:	Septin 1 (SEPT1)
Binding Specificity:	AA 161-260
Reactivity:	Human, Mouse
Host:	Rabbit
Clonality:	Polyclonal
Conjugate:	This Septin 1 antibody is un-conjugated
Application:	Western Blotting (WB), ELISA, Immunofluorescence (Cultured Cells) (IF (cc)), Immunofluorescence (Paraffin-embedded Sections) (IF (p)), Immunohistochemistry (Paraffin-embedded Sections) (IHC (p)), Immunohistochemistry (Frozen Sections) (IHC (fro))

Product Details

Immunogen:	KLH conjugated synthetic peptide derived from human SEPT1
Isotype:	IgG
Cross-Reactivity:	Human, Mouse
Predicted Reactivity:	Rat,Dog,Cow,Pig,Horse
Purification:	Purified by Protein A.

Target Details

Target:	Septin 1 (SEPT1)
---------	------------------

Target Details

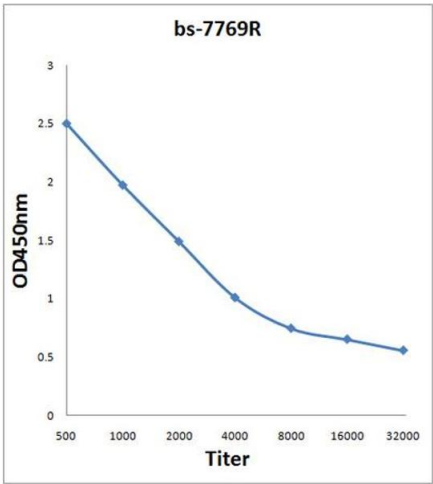
Alternative Name:	Sept1 (SEPT1 Products)
Background:	<p>Synonyms: LARP, SEP1, DIFF6, PNUTL3, Septin-1, Peanut-like protein 3, Serologically defined breast cancer antigen NY-BR-24, SEPT1</p> <p>Background: SEPT1 is a member of the septin family of GTPases. Members of this family are required for cytokinesis. SEPT1 is associated with the tau-based paired helical filament core, and may contribute to the formation of neurofibrillary tangles in Alzheimer's disease.</p>
Gene ID:	1731
UniProt:	Q8WYJ6

Application Details

Application Notes:	WB 1:300-5000 ELISA 1:500-1000 IHC-P 1:200-400 IHC-F 1:100-500 IF(IHC-P) 1:50-200 IF(IHC-F) 1:50-200 IF(ICC) 1:50-200
Restrictions:	For Research Use only

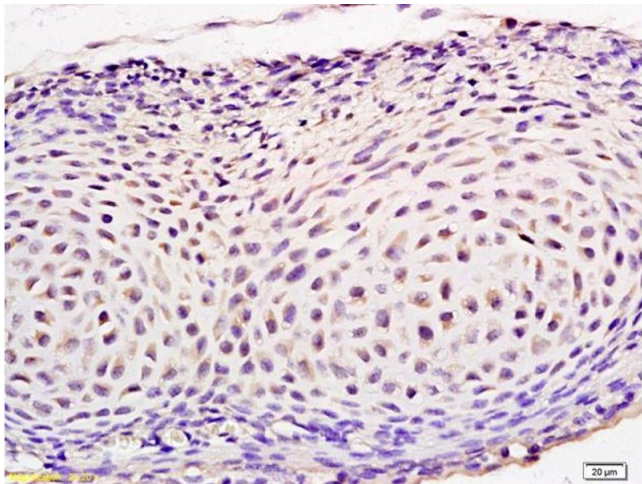
Handling

Format:	Liquid
Concentration:	1 µg/µL
Buffer:	0.01M TBS(pH 7.4) with 1 % BSA, 0.02 % Proclin300 and 50 % Glycerol.
Preservative:	ProClin
Precaution of Use:	This product contains ProClin: a POISONOUS AND HAZARDOUS SUBSTANCE, which should be handled by trained staff only.
Storage:	4 °C,-20 °C
Storage Comment:	Shipped at 4°C. Store at -20°C for one year. Avoid repeated freeze/thaw cycles.
Expiry Date:	12 months



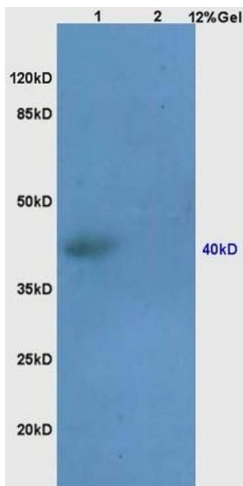
ELISA

Image 1. Antigen: 2 µg/100 µL Primary: Antiserum, 1:500, 1:1000, 1:2000, 1:4000, 1:8000, 1:16000, 1:32000; Secondary: HRP conjugated Rabbit Anti-Goat IgG at 1: 5000; TMB staining Read the data in Microplate Reader by 450nm.



Immunohistochemistry

Image 2. Formalin-fixed and paraffin embedded mouse embryo labeled with Anti-SEPT1 Polyclonal Antibody, Unconjugated (ABIN872796) at 1:200 followed by conjugation to the secondary antibody and DAB staining.



SDS-PAGE

Image 3. Lane 1: human colon carcinoma lysates Lane 2: mouse thymus lysates probed with Anti SEPT1 Polyclonal Antibody, Unconjugated (ABIN872796) at 1:200 in 4 °C. Followed by conjugation to secondary antibody at 1:3000 90min in 37 °C. Predicted band 40kD. Observed band size: 40kD.

Please check the [product details page](#) for more images. Overall 4 images are available for ABIN872796.