

Datasheet for ABIN872806  
**anti-RFFL antibody (AA 251-363)**[Go to Product page](#)

## 1 Image

## Overview

Quantity:	100 µL
Target:	RFFL
Binding Specificity:	AA 251-363
Reactivity:	Human, Mouse
Host:	Rabbit
Clonality:	Polyclonal
Conjugate:	This RFFL antibody is un-conjugated
Application:	Western Blotting (WB), ELISA, Immunofluorescence (Cultured Cells) (IF (cc)), Immunofluorescence (Paraffin-embedded Sections) (IF (p)), Immunohistochemistry (Paraffin-embedded Sections) (IHC (p)), Immunohistochemistry (Frozen Sections) (IHC (fro))

## Product Details

Immunogen:	KLH conjugated synthetic peptide derived from human RING finger protein 189
Isotype:	IgG
Cross-Reactivity:	Human, Mouse
Predicted Reactivity:	Rat,Dog,Cow,Sheep,Pig,Rabbit
Purification:	Purified by Protein A.

## Target Details

Target:	RFFL
---------	------

## Target Details

Alternative Name:	RING finger protein 189 ( <a href="#">RFFL Products</a> )
Background:	<p>Synonyms: CARP-2, CARP2, Caspase regulator CARP2, Caspases 8 and 10 associated RING finger protein 2, Caspases-8 and -10-associated RING finger protein 2, E3 ubiquitin protein ligase rylin, E3 ubiquitin-protein ligase rylin, Fring, FYVE RING finger protein Sakura, FYVE-RING finger protein Sakura, Rffl, RFFL_HUMAN, Rylin, RING finger and FYVE like domain containing protein, RING finger and FYVE-like domain-containing protein 1, RING finger protein 189, RING finger protein 34 like, RING finger protein 34-like, RNF189, RNF34L.</p> <p>Background: Has E3 ubiquitin protein ligase activity. Regulates the levels of CASP8 and CASP10 by targeting them for proteasomal degradation. Has anti-apoptotic activity. May bind phosphatidylinositol phosphates.</p>
Gene ID:	117584

## Application Details

Application Notes:	WB 1:300-5000 ELISA 1:500-1000 IHC-P 1:200-400 IHC-F 1:100-500 IF(IHC-P) 1:50-200 IF(IHC-F) 1:50-200 IF(ICC) 1:50-200
Restrictions:	For Research Use only

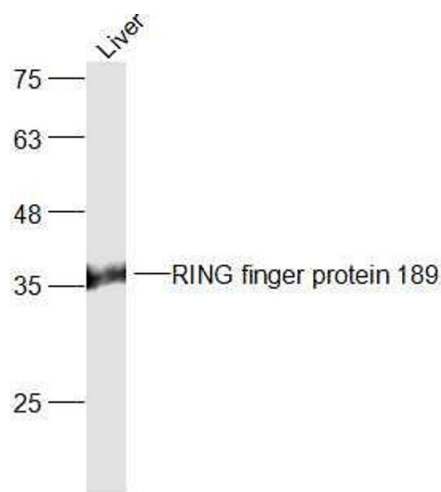
## Handling

Format:	Liquid
Concentration:	1 µg/µL
Buffer:	0.01M TBS( pH 7.4) with 1 % BSA, 0.02 % Proclin300 and 50 % Glycerol.
Preservative:	ProClin
Precaution of Use:	This product contains ProClin: a POISONOUS AND HAZARDOUS SUBSTANCE, which should be handled by trained staff only.
Storage:	4 °C,-20 °C
Storage Comment:	Shipped at 4°C. Store at -20°C for one year. Avoid repeated freeze/thaw cycles.

Handling

Expiry Date: 12 months

Images



Western Blotting

**Image 1.** Mouse Liver lysates probed with RING finger protein 189 Polyclonal Antibody, Unconjugated at 1:300 dilution and 4°C overnight incubation. Followed by conjugated secondary antibody incubation at 1:10000 for 60 min at 37°C.