

Datasheet for ABIN872875
anti-GLA antibody (AA 101-200)

2 Images

[Go to Product page](#)

Overview

Quantity:	100 µL
Target:	GLA
Binding Specificity:	AA 101-200
Reactivity:	Human, Mouse, Rat
Host:	Rabbit
Clonality:	Polyclonal
Conjugate:	This GLA antibody is un-conjugated
Application:	Western Blotting (WB), ELISA, Flow Cytometry (FACS), Immunohistochemistry (Paraffin-embedded Sections) (IHC (p)), Immunofluorescence (Cultured Cells) (IF (cc)), Immunofluorescence (Paraffin-embedded Sections) (IF (p)), Immunohistochemistry (Frozen Sections) (IHC (fro))

Product Details

Immunogen:	KLH conjugated synthetic peptide derived from human Galactosidase alpha
Isotype:	IgG
Cross-Reactivity:	Human, Mouse, Rat
Predicted Reactivity:	Dog,Cow,Pig,Rabbit
Purification:	Purified by Protein A.

Target Details

Target:	GLA
---------	-----

Target Details

Alternative Name:	Galactosidase alpha (GLA Products)
Background:	<p>Synonyms: GALA, Alpha-galactosidase A, Alpha-D-galactosidase A, Alpha-D-galactoside galactohydrolase, Melibiase, GLA</p> <p>Background: Galactosidase alpha is involved in the hydrolysis of terminal, non reducing alpha D galactose residues in alpha D galactosides, including galactose oligosaccharides, galactomannans and galactohydrolase. Defects in GLA are the cause of Fabry's disease (FD). FD is a rare X-linked sphingolipidosis disease where glycolipid accumulates in many tissues. Clinical recognition in males results from characteristic skin lesions (angiokeratomas) over the lower trunk. Patients may show ocular deposits, febrile episodes, and burning pain in the extremities. Death results from renal failure, cardiac or cerebral complications of hypertension or other vascular disease. Heterozygous females may exhibit the disorder in an attenuated form, they are more likely to show corneal opacities.</p>
Gene ID:	2717
UniProt:	P06280
Pathways:	SARS-CoV-2 Protein Interactome

Application Details

Application Notes:	WB 1:300-5000 ELISA 1:500-1000 FCM 1:20-100 IHC-P 1:200-400 IHC-F 1:100-500 IF(IHC-P) 1:50-200 IF(IHC-F) 1:50-200 IF(ICC) 1:50-200
Restrictions:	For Research Use only

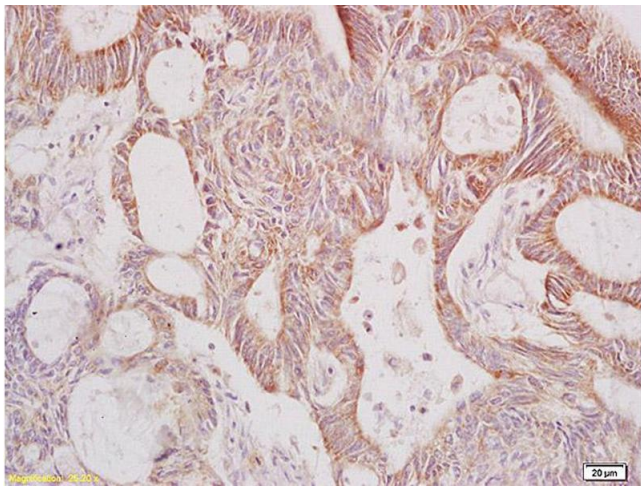
Handling

Format:	Liquid
Concentration:	1 µg/µL
Buffer:	0.01M TBS(pH 7.4) with 1 % BSA, 0.02 % Proclin300 and 50 % Glycerol.
Preservative:	ProClin

Handling

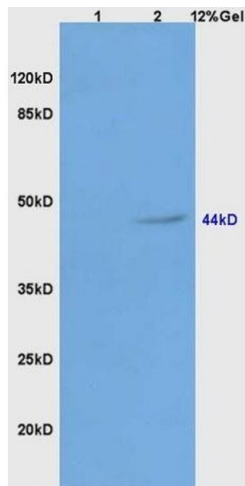
Precaution of Use:	This product contains ProClin: a POISONOUS AND HAZARDOUS SUBSTANCE, which should be handled by trained staff only.
Storage:	4 °C,-20 °C
Storage Comment:	Shipped at 4°C. Store at -20°C for one year. Avoid repeated freeze/thaw cycles.
Expiry Date:	12 months

Images



Immunohistochemistry

Image 1. Formalin-fixed and paraffin embedded human rectal carcinoma labeled with Anti-Galactosidase alpha Polyclonal Antibody, Unconjugated (ABIN872875) at 1:200 followed by conjugation to the secondary antibody and DAB staining.



SDS-PAGE

Image 2. Lane 1: mouse liver lysates Lane 2: human colon carcinoma lysates probed with Anti Galactosidase alpha Polyclonal Antibody, Unconjugated (ABIN872875) at 1:200 in 4 °C. Followed by conjugation to secondary antibody at 1:3000 90min in 37 °C. Predicted band 44kD. Observed band size: 44kD.