



[Go to Product page](#)

Datasheet for ABIN872908

anti-FGG antibody (AA 151-250)

2 Images

1 Publication

Overview

| | |
|----------------------|--|
| Quantity: | 100 µL |
| Target: | FGG |
| Binding Specificity: | AA 151-250 |
| Reactivity: | Human, Mouse, Rat |
| Host: | Rabbit |
| Clonality: | Polyclonal |
| Conjugate: | This FGG antibody is un-conjugated |
| Application: | Western Blotting (WB), ELISA, Immunohistochemistry (Paraffin-embedded Sections) (IHC (p)), Immunofluorescence (Cultured Cells) (IF (cc)), Immunofluorescence (Paraffin-embedded Sections) (IF (p)), Immunohistochemistry (Frozen Sections) (IHC (fro)) |

Product Details

| | |
|-----------------------|--|
| Immunogen: | KLH conjugated synthetic peptide derived from human Fibrinogen gamma chain |
| Isotype: | IgG |
| Cross-Reactivity: | Human, Mouse, Rat |
| Predicted Reactivity: | Dog,Horse,Rabbit |
| Purification: | Purified by Protein A. |

Target Details

| | |
|---------|-----|
| Target: | FGG |
|---------|-----|

Target Details

Alternative Name: Fibrinogen gamma chain ([FGG Products](#))

Background: Synonyms: Fibrinogen gamma chain, FGG, PRO2061
Background: Together with fibrinogen alpha (FGA) and fibrinogen beta (FGB), polymerizes to form an insoluble fibrin matrix. Has a major function in hemostasis as one of the primary components of blood clots. In addition, functions during the early stages of wound repair to stabilize the lesion and guide cell migration during re-epithelialization. Was originally thought to be essential for platelet aggregation, based on in vitro studies using anticoagulated blood. However, subsequent studies have shown that it is not absolutely required for thrombus formation in vivo. Enhances expression of SELP in activated platelets via an ITGB3-dependent pathway. Maternal fibrinogen is essential for successful pregnancy. Fibrin deposition is also associated with infection, where it protects against IFNG-mediated hemorrhage. May also facilitate the antibacterial immune response via both innate and T-cell mediated pathways.

Gene ID: 2266

UniProt: [P02679](#)

Application Details

Application Notes: WB 1:300-5000
ELISA 1:500-1000
IHC-P 1:200-400
IHC-F 1:100-500
IF(IHC-P) 1:50-200
IF(IHC-F) 1:50-200
IF(ICC) 1:50-200

Restrictions: For Research Use only

Handling

Format: Liquid

Concentration: 1 µg/µL

Buffer: 0.01M TBS(pH 7.4) with 1 % BSA, 0.02 % Proclin300 and 50 % Glycerol.

Preservative: ProClin

Precaution of Use: This product contains ProClin: a POISONOUS AND HAZARDOUS SUBSTANCE, which should be handled by trained staff only.

Handling

Storage: 4 °C, -20 °C

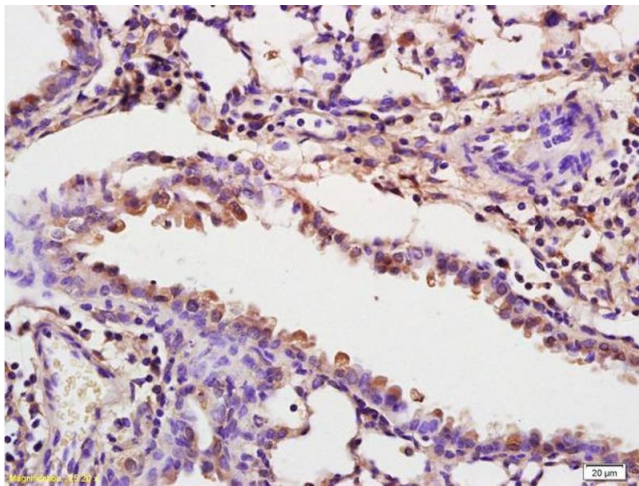
Storage Comment: Shipped at 4°C. Store at -20°C for one year. Avoid repeated freeze/thaw cycles.

Expiry Date: 12 months

Publications

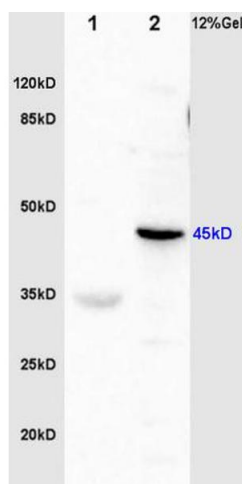
Product cited in: Li, He, Di, Yan, Zhang: "Comparative analysis of the serum proteome for biomarker discovery to reveal hepatotoxicity induced by iron ion radiation in mice." in: **Life sciences**, Vol. 167, pp. 57-66, (2016) ([PubMed](#)).

Images



Immunohistochemistry

Image 1. Formalin-fixed and paraffin embedded rat lung labeled with Anti-Fibrinogen gamma chain Polyclonal Antibody, Unconjugated (ABIN872908) at 1:200 followed by conjugation to the secondary antibody and DAB staining.



SDS-PAGE

Image 2. L1 rat brain lysates L2 mouse plasma lysates probed with Anti Fibrinogen gamma chain Polyclonal Antibody, Unconjugated (ABIN872908) at 1:200 in 4 °C. Followed by conjugation to secondary antibody at 1:3000 90min in 37 °C. Predicted band 45kD. Observed band size: 45kD