



[Go to Product page](#)

Datasheet for ABIN872915

anti-Septin 14 antibody (AA 351-432)

1 Image

Overview

Quantity:	100 µL
Target:	Septin 14 (SEPT14)
Binding Specificity:	AA 351-432
Reactivity:	Mouse, Rat
Host:	Rabbit
Clonality:	Polyclonal
Conjugate:	This Septin 14 antibody is un-conjugated
Application:	Western Blotting (WB), ELISA, Immunofluorescence (Cultured Cells) (IF (cc)), Immunofluorescence (Paraffin-embedded Sections) (IF (p)), Immunohistochemistry (Paraffin-embedded Sections) (IHC (p)), Immunohistochemistry (Frozen Sections) (IHC (fro))

Product Details

Immunogen:	KLH conjugated synthetic peptide derived from human SEPT14
Isotype:	IgG
Cross-Reactivity:	Mouse, Rat
Predicted Reactivity:	Human
Purification:	Purified by Protein A.

Target Details

Target:	Septin 14 (SEPT14)
---------	--------------------

Target Details

Alternative Name: 14-Sep ([SEPT14 Products](#))

Background: Synonyms: Septin-14, SEPT14

Background: Septin 14, also known as SEPT14, is a 432 amino acid protein that belongs to the septin family. The highly conserved septin family of GTP-binding cytoskeletal proteins is implicated in membrane transport, apoptosis, cell polarity, cell cycle regulation, cytokinesis and other cellular functions. Septins polymerize into heterooligomeric protein complexes that form filaments, and can associate with cellular membranes, actin filaments and microtubules. Septin 14 has a GTPase domain followed by a C-terminal coiled-coil domain characteristic of group II septins. Septin 14 interacted with all septins except those that are members of its phylogenetic cluster, including itself. Septin 14 shares highest identity (67 %) with Septin 10. Expressed in testis and more weakly in fetal liver, tonsil and thymus, the Septin 14 protein is not detected in testicular cancer or other normal or cancer cell lines. The Septin 14 gene is conserved in chimpanzee, dog, cow, mouse and rat, and maps to human chromosome 7p11.2.

Gene ID: 346288

UniProt: [Q6ZU15](#)

Application Details

Application Notes: WB 1:300-5000
ELISA 1:500-1000
IHC-P 1:200-400
IHC-F 1:100-500
IF(IHC-P) 1:50-200
IF(IHC-F) 1:50-200
IF(ICC) 1:50-200

Restrictions: For Research Use only

Handling

Format: Liquid

Concentration: 1 µg/µL

Buffer: 0.01M TBS(pH 7.4) with 1 % BSA, 0.02 % Proclin300 and 50 % Glycerol.

Preservative: ProClin

Precaution of Use: This product contains ProClin: a POISONOUS AND HAZARDOUS SUBSTANCE, which should be

Handling

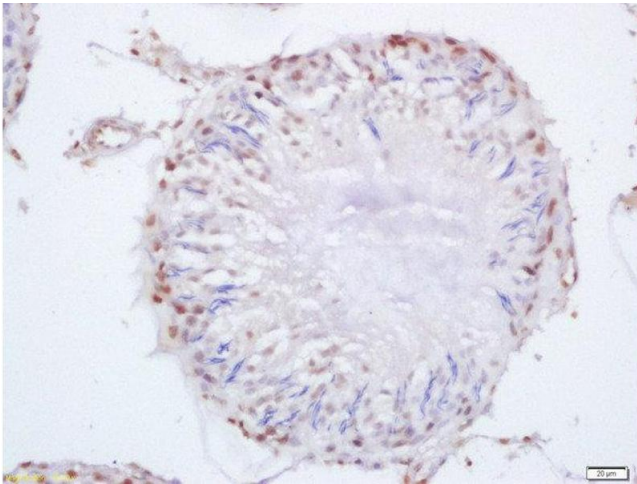
handled by trained staff only.

Storage: 4 °C,-20 °C

Storage Comment: Shipped at 4°C. Store at -20°C for one year. Avoid repeated freeze/thaw cycles.

Expiry Date: 12 months

Images



Immunohistochemistry (Paraffin-embedded Sections)

Image 1. Formalin-fixed and paraffin embedded rat testis labeled with Anti-SEPT14 Polyclonal Antibody, Unconjugated at 1:200 followed by conjugation to the secondary antibody and DAB staining