



[Go to Product page](#)

Datasheet for ABIN872940  
**anti-CCDC61 antibody (AA 265-370)**

2 Images

Overview

Quantity:	100 µL
Target:	CCDC61
Binding Specificity:	AA 265-370
Reactivity:	Mouse, Rat
Host:	Rabbit
Clonality:	Polyclonal
Conjugate:	This CCDC61 antibody is un-conjugated
Application:	Western Blotting (WB), ELISA, Immunofluorescence (Paraffin-embedded Sections) (IF (p)), Immunofluorescence (Cultured Cells) (IF (cc)), Immunohistochemistry (Paraffin-embedded Sections) (IHC (p)), Immunohistochemistry (Frozen Sections) (IHC (fro))

Product Details

Immunogen:	KLH conjugated synthetic peptide derived from human CCDC61
Isotype:	IgG
Cross-Reactivity:	Mouse, Rat
Predicted Reactivity:	Human,Dog,Cow,Sheep,Pig
Purification:	Purified by Protein A.

Target Details

Target:	CCDC61
---------	--------

## Target Details

---

Alternative Name:	CCDC61 ( <a href="#">CCDC61 Products</a> )
Background:	Synonyms: Coiled-coil domain-containing protein 61, CCDC61 Background: CCDC61
Gene ID:	729440
UniProt:	<a href="#">Q9Y6R9</a>

## Application Details

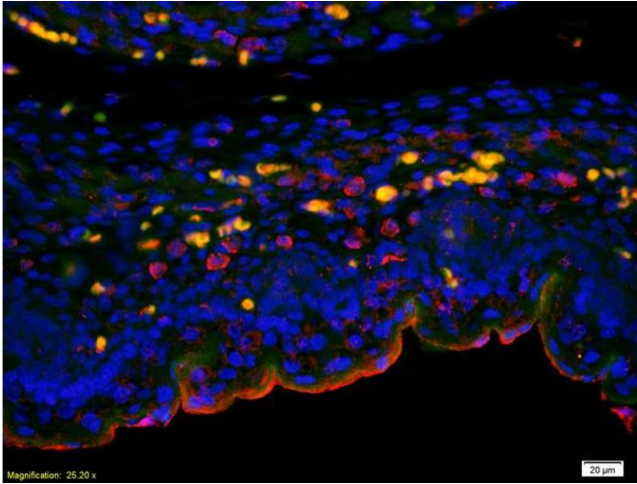
---

Application Notes:	WB 1:300-5000 ELISA 1:500-1000 IHC-P 1:200-400 IHC-F 1:100-500 IF(IHC-P) 1:50-200 IF(IHC-F) 1:50-200 IF(ICC) 1:50-200
Restrictions:	For Research Use only

## Handling

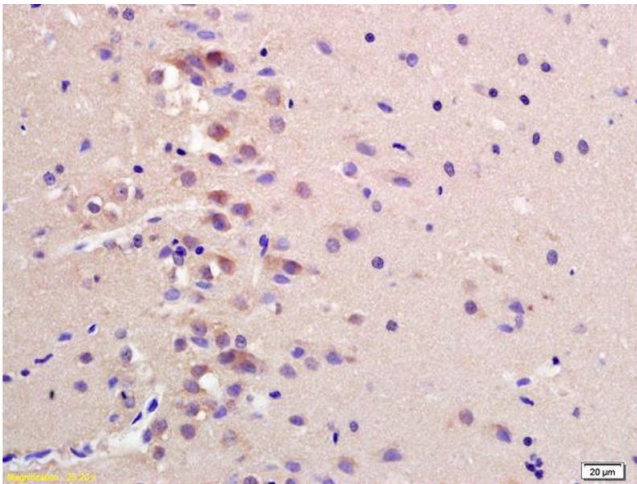
---

Format:	Liquid
Concentration:	1 µg/µL
Buffer:	0.01M TBS( pH 7.4) with 1 % BSA, 0.02 % Proclin300 and 50 % Glycerol.
Preservative:	ProClin
Precaution of Use:	This product contains ProClin: a POISONOUS AND HAZARDOUS SUBSTANCE, which should be handled by trained staff only.
Storage:	4 °C,-20 °C
Storage Comment:	Shipped at 4°C. Store at -20°C for one year. Avoid repeated freeze/thaw cycles.
Expiry Date:	12 months



### Immunofluorescence

**Image 1.** Formalin-fixed and paraffin embedded mouse embryo labeled with Anti-CCDC61 Polyclonal Antibody, Unconjugated (ABIN872940) at 1:200 followed by conjugation to the secondary antibody Goat Anti-Rabbit IgG, Cy3 conjugated used at 1:200 dilution for 40 minutes at 37°C. DAPI(5 µg/ml) was used to stain the cell nuclei



### Immunohistochemistry

**Image 2.** Formalin-fixed and paraffin embedded rat brain labeled with Anti-CCDC61 Polyclonal Antibody, Unconjugated (ABIN872940) at 1:200 followed by conjugation to the secondary antibody and DAB staining