

Datasheet for ABIN872952
anti-A1BG antibody (AA 301-400)**3** Images**1** Publication[Go to Product page](#)

Overview

Quantity:	100 µL
Target:	A1BG
Binding Specificity:	AA 301-400
Reactivity:	Human
Host:	Rabbit
Clonality:	Polyclonal
Conjugate:	This A1BG antibody is un-conjugated
Application:	Western Blotting (WB), ELISA, Immunohistochemistry (Paraffin-embedded Sections) (IHC (p)), Immunofluorescence (Cultured Cells) (IF (cc)), Immunofluorescence (Paraffin-embedded Sections) (IF (p)), Immunohistochemistry (Frozen Sections) (IHC (fro))

Product Details

Immunogen:	KLH conjugated synthetic peptide derived from human A1BG
Isotype:	IgG
Cross-Reactivity:	Human
Predicted Reactivity:	Mouse,Rat
Purification:	Purified by Protein A.

Target Details

Target:	A1BG
---------	------

Target Details

Alternative Name:	A1BG (A1BG Products)
Background:	Synonyms: A1B, ABG, GAB, HYST2477, Alpha-1B-glycoprotein, Alpha-1-B glycoprotein, A1BG Background: The protein encoded by this gene is a plasma glycoprotein of unknown function. The protein shows sequence similarity to the variable regions of some immunoglobulin supergene family member proteins. [provided by RefSeq, Jul 2008].
Gene ID:	1
UniProt:	P04217

Application Details

Application Notes:	WB 1:300-5000 ELISA 1:500-1000 IHC-P 1:200-400 IHC-F 1:100-500 IF(IHC-P) 1:50-200 IF(IHC-F) 1:50-200 IF(ICC) 1:50-200
Restrictions:	For Research Use only

Handling

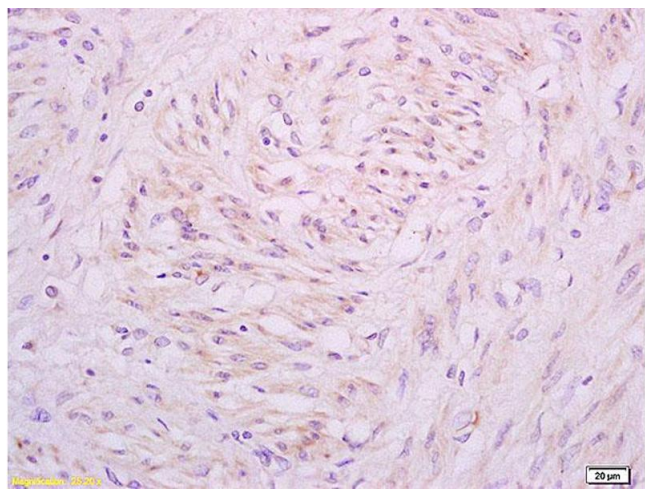
Format:	Liquid
Concentration:	1 µg/µL
Buffer:	0.01M TBS(pH 7.4) with 1 % BSA, 0.02 % Proclin300 and 50 % Glycerol.
Preservative:	ProClin
Precaution of Use:	This product contains ProClin: a POISONOUS AND HAZARDOUS SUBSTANCE, which should be handled by trained staff only.
Storage:	4 °C,-20 °C
Storage Comment:	Shipped at 4°C. Store at -20°C for one year. Avoid repeated freeze/thaw cycles.
Expiry Date:	12 months

Publications

Product cited in:	Satoh, Yamada, Maniwa, Oda, Matsumoto: "Monitoring of Serial Presurgical and Postsurgical
-------------------	-------------------------------------------------------------------------------------------

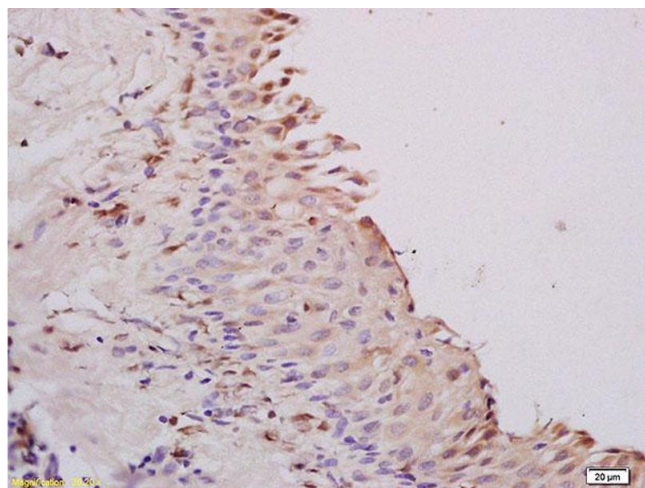
Changes in the Serum Proteome in a Series of Patients with Calcific Aortic Stenosis." in:
Disease markers, Vol. 2015, pp. 694120, (2015) ([PubMed](#)).

Images



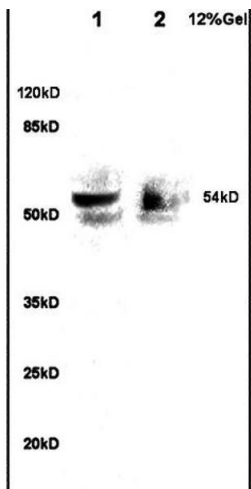
Immunohistochemistry

Image 1. Formalin-fixed and paraffin embedded human cervical carcinoma tissue labeled with Anti A1BG Polyclonal Antibody,Unconjugated (ABIN872952) at 1:200 followed by conjugation to the secondary antibody and DAB staining.



Immunohistochemistry

Image 2. Formalin-fixed and paraffin embedded rat ovary tissue labeled with Anti A1BG Polyclonal Antibody,Unconjugated (ABIN872952) at 1:200 followed by conjugation to the secondary antibody and DAB staining.



Western Blotting

Image 3. Lane 1: rat brain lysates Lane 2: human colon carcinoma lysates probed with Anti A1BG Polyclonal Antibody, Unconjugated at 1:200 in 4°C. Followed by conjugation to secondary antibody -HRP at 1:3000 90min in 37°C. Predicted band 54kD. Observed band size: 54kD.