

Datasheet for ABIN872955
anti-KRT12 antibody (AA 151-250)[Go to Product page](#)

2 Images

Overview

Quantity:	100 µL
Target:	KRT12
Binding Specificity:	AA 151-250
Reactivity:	Human, Mouse
Host:	Rabbit
Clonality:	Polyclonal
Conjugate:	This KRT12 antibody is un-conjugated
Application:	Western Blotting (WB), ELISA, Immunofluorescence (Cultured Cells) (IF (cc)), Immunofluorescence (Paraffin-embedded Sections) (IF (p)), Immunohistochemistry (Paraffin- embedded Sections) (IHC (p)), Immunohistochemistry (Frozen Sections) (IHC (fro))

Product Details

Immunogen:	KLH conjugated synthetic peptide derived from human CK12/Cytokeratin 12
Isotype:	IgG
Cross-Reactivity:	Human, Mouse, Rat
Predicted Reactivity:	Dog,Rabbit
Purification:	Purified by Protein A.

Target Details

Target:	KRT12
---------	-------

Target Details

Alternative Name:	CK12 (KRT12 Products)
Background:	<p>Synonyms: 65 kDa cytokeratin, CK 12, CK 3, CK12, CK3, Cytokeratin 12, Cytokeratin 3, K12, K3, keratin 12 Meesmann corneal dystrophy, Keratin 12, Keratin 3, Keratin, type I cytoskeletal 12, K1C12_HUMAN, Keratin, type II cytoskeletal 3, KRT12, KRT3.</p> <p>Background: Cytokeratin 12 is a member of the intermediate filament family of proteins and is a heterotetramer of two type I and two type II keratins. Keratin 3 is specifically expressed in the corneal epithelium with family member KRT12. Cytokeratin 12 encodes the type I intermediate filament chain keratin 12, expressed in corneal epithelia. Defects in KRT3 and KRT12 are a cause of Meesmann corneal dystrophy (MCD), an autosomal dominant disease that causes fragility of the anterior corneal epithelium. Symptoms occur in adulthood and include rupture of the corneal microcysts that may lead to photophobia, contact lens intolerance and intermittent diminution of visual acuity. Defects in KRT12 are a cause of juvenile epithelial corneal dystrophy of Meesmann (MCD)</p>
Molecular Weight:	54kDa
Gene ID:	3859

Application Details

Application Notes:	ELISA 1:500-1000 IHC-P 1:200-400 IHC-F 1:100-500 IF(IHC-P) 1:50-200 IF(IHC-F) 1:50-200 IF(ICC) 1:50-200
Restrictions:	For Research Use only

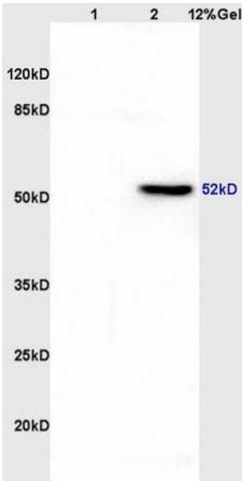
Handling

Format:	Liquid
Concentration:	1 µg/µL
Buffer:	0.01M TBS(pH 7.4) with 1 % BSA, 0.02 % Proclin300 and 50 % Glycerol.
Preservative:	ProClin
Precaution of Use:	This product contains ProClin: a POISONOUS AND HAZARDOUS SUBSTANCE, which should be handled by trained staff only.

Handling

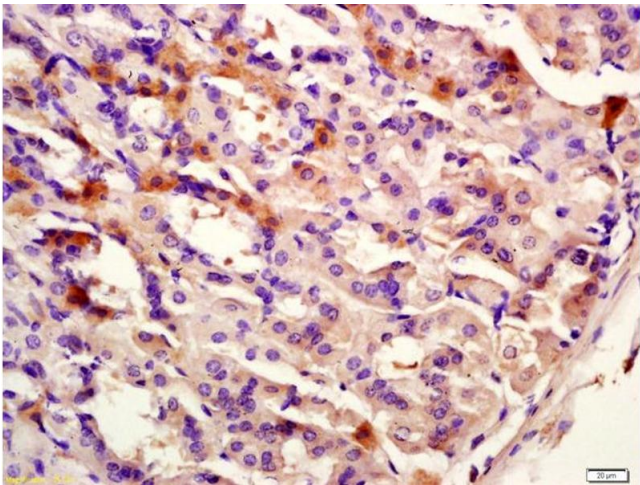
Storage:	4 °C,-20 °C
Storage Comment:	Shipped at 4°C. Store at -20°C for one year. Avoid repeated freeze/thaw cycles.
Expiry Date:	12 months

Images



SDS-PAGE

Image 1. Lane 1: rat liver lysates Lane 2: rat brain lysates probed with Anti CK12/Cytokeratin 12 Polyclonal Antibody, Unconjugated (ABIN872955) at 1:200 in 4 °C. Followed by conjugation to secondary antibody at 1:3000 90min in 37 °C. Predicted band 52kD. Observed band size: 52kD.



Immunohistochemistry

Image 2. Formalin-fixed and paraffin embedded mouse stomach labeled with Anti-CK12 Polyclonal Antibody, Unconjugated (ABIN872955) at 1:200 followed by conjugation to the secondary antibody and DAB staining