

Datasheet for ABIN873017
anti-SLC2A10 antibody (AA 288-335)[Go to Product page](#)

1 Image

Overview

Quantity:	100 µL
Target:	SLC2A10
Binding Specificity:	AA 288-335
Reactivity:	Rat
Host:	Rabbit
Clonality:	Polyclonal
Conjugate:	This SLC2A10 antibody is un-conjugated
Application:	Western Blotting (WB), ELISA, Immunofluorescence (Cultured Cells) (IF (cc)), Immunofluorescence (Paraffin-embedded Sections) (IF (p)), Immunohistochemistry (Paraffin-embedded Sections) (IHC (p)), Immunohistochemistry (Frozen Sections) (IHC (fro))

Product Details

Immunogen:	KLH conjugated synthetic peptide derived from human GLUT10
Isotype:	IgG
Cross-Reactivity:	Rat
Predicted Reactivity:	Human,Mouse,Dog,Cow
Purification:	Purified by Protein A.

Target Details

Target:	SLC2A10
---------	---------

Target Details

Alternative Name:	Glut10 (SLC2A10 Products)
Background:	<p>Synonyms: ATS, GLUT10, Solute carrier family 2, facilitated glucose transporter member 10, Glucose transporter type 10, GLUT-10, SLC2A10</p> <p>Background: Defects in SLC2A10 are the cause of arterial tortuosity syndrome (ATS) [MIM:208050]. ATS is an autosomal recessive disorder characterized by tortuosity and elongation of major arteries, often resulting in death at young age. Other typical features include aneurysms of large arteries and stenosis of the pulmonary artery, in association with facial features and several connective tissue manifestations such as soft skin and joint laxity. Histopathological findings include fragmentation of elastic fibers in the tunica media of large arteries.</p>
Gene ID:	81031
UniProt:	O95528

Application Details

Application Notes:	<p>WB 1:300-5000</p> <p>ELISA 1:500-1000</p> <p>IHC-P 1:200-400</p> <p>IHC-F 1:100-500</p> <p>IF(IHC-P) 1:50-200</p> <p>IF(IHC-F) 1:50-200</p> <p>IF(ICC) 1:50-200</p>
Restrictions:	For Research Use only

Handling

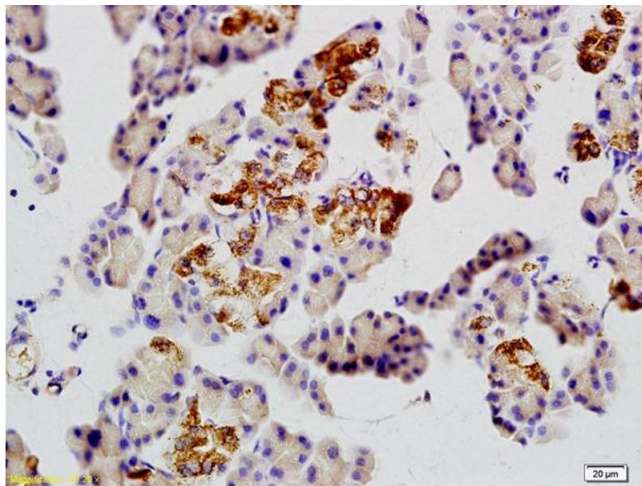
Format:	Liquid
Concentration:	1 µg/µL
Buffer:	0.01M TBS(pH 7.4) with 1 % BSA, 0.02 % Proclin300 and 50 % Glycerol.
Preservative:	ProClin
Precaution of Use:	This product contains ProClin: a POISONOUS AND HAZARDOUS SUBSTANCE, which should be handled by trained staff only.
Storage:	4 °C,-20 °C

Handling

Storage Comment: Shipped at 4°C. Store at -20°C for one year. Avoid repeated freeze/thaw cycles.

Expiry Date: 12 months

Images



Immunohistochemistry

Image 1. Formalin-fixed and paraffin embedded rat pancreas tissue labeled with Anti-GLUT10/Glucose Transporter GLUT10 Polyclonal Antibody, Unconjugated (ABIN873017) at 1:200 followed by conjugation to the secondary antibody