

Datasheet for ABIN873094

**anti-Kelch-Like 24 antibody (AA 1-100)****3** Images[Go to Product page](#)

## Overview

|                      |  |
|----------------------|--|
| Quantity:            | 100 µL   |
| Target:              | Kelch-Like 24 (KLHL24)   |
| Binding Specificity: | AA 1-100   |
| Reactivity:          | Mouse, Rat   |
| Host:                | Rabbit   |
| Clonality:           | Polyclonal   |
| Conjugate:           | This Kelch-Like 24 antibody is un-conjugated   |
| Application:         | Western Blotting (WB), ELISA, Immunofluorescence (Paraffin-embedded Sections) (IF (p)), Immunofluorescence (Cultured Cells) (IF (cc)), Immunohistochemistry (Paraffin-embedded Sections) (IHC (p)), Immunohistochemistry (Frozen Sections) (IHC (fro)) |

## Product Details

|                       |  |
|-----------------------|--|
| Immunogen:            | KLH conjugated synthetic peptide derived from human KLHL24 |
| Isotype:              | IgG  |
| Cross-Reactivity:     | Mouse, Rat   |
| Predicted Reactivity: | Human,Dog,Rabbit   |
| Purification:         | Purified by Protein A.                                     |

## Target Details

|         |                        |
|---------|------------------------|
| Target: | Kelch-Like 24 (KLHL24) |
|---------|------------------------|

## Target Details

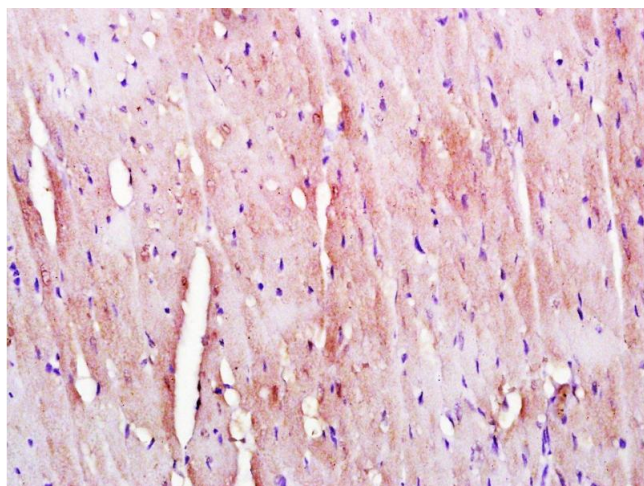
|                   |   |
|-------------------|---|
| Alternative Name: | KLHL24 ( <a href="#">KLHL24 Products</a> )  |
| Background:       | Synonyms: DRE1, KRIP6, Kelch-like protein 24, Kainate receptor-interacting protein for GluR6, Protein DRE1, KLHL24<br><br>Background: Specifically reduces kainate receptor-mediated currents in hippocampal neurons, most probably by modulating channel properties. |
| Gene ID:          | 54800   |
| UniProt:          | <a href="#">Q6TFL4</a>  |

## Application Details

|                    |   |
|--------------------|---|
| Application Notes: | WB 1:300-5000<br>ELISA 1:500-1000<br>IHC-P 1:200-400<br>IHC-F 1:100-500<br>IF(IHC-P) 1:50-200<br>IF(IHC-F) 1:50-200<br>IF(ICC) 1:50-200 |
| Restrictions:      | For Research Use only   |

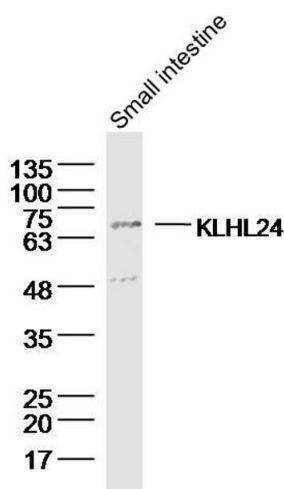
## Handling

|                    |  |
|--------------------|--|
| Format:            | Liquid   |
| Concentration:     | 1 µg/µL  |
| Buffer:            | 0.01M TBS( pH 7.4) with 1 % BSA, 0.02 % Proclin300 and 50 % Glycerol.  |
| Preservative:      | ProClin  |
| Precaution of Use: | This product contains ProClin: a POISONOUS AND HAZARDOUS SUBSTANCE, which should be handled by trained staff only. |
| Storage:           | 4 °C,-20 °C  |
| Storage Comment:   | Shipped at 4°C. Store at -20°C for one year. Avoid repeated freeze/thaw cycles.                                    |
| Expiry Date:       | 12 months  |



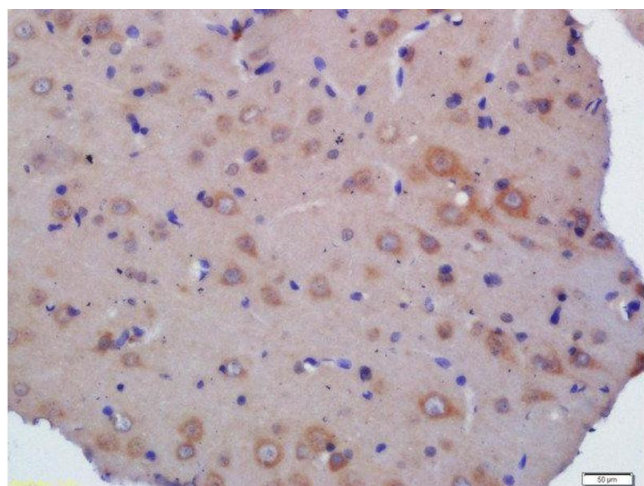
#### Immunohistochemistry (Paraffin-embedded Sections)

**Image 1.** Paraformaldehyde-fixed, paraffin embedded Mouse heart, Antigen retrieval by boiling in sodium citrate buffer (pH6.0) for 15min, Block endogenous peroxidase by 3% hydrogen peroxide for 20 minutes, Blocking buffer (normal goat serum) at 37°C for 30min, Antibody incubation with KLHL24 Polyclonal Antibody, Unconjugated at 1:400 overnight at 4°C, followed by a conjugated secondary antibody for 20 minutes and DAB staining.



#### Western Blotting

**Image 2.** Lane 1: Mouse small intestine lysates probed with KLHL24 Polyclonal Antibody, Unconjugated at 1:300 overnight at 4°C. Followed by a conjugated secondary antibody at 1:20000 for 90 min at 37°C.



#### Immunohistochemistry (Paraffin-embedded Sections)

**Image 3.** Formalin-fixed and paraffin embedded labeled with Rabbit Anti- Polyclonal Antibody, Unconjugated at 1:200 followed by conjugation to the secondary antibody and DAB staining