

Datasheet for ABIN873099  
**anti-ADCK2 antibody (AA 545-626)**

## 2 Images

[Go to Product page](#)

## Overview

Quantity:	100 µL
Target:	ADCK2
Binding Specificity:	AA 545-626
Reactivity:	Human
Host:	Rabbit
Clonality:	Polyclonal
Conjugate:	This ADCK2 antibody is un-conjugated
Application:	Western Blotting (WB), ELISA, Immunofluorescence (Cultured Cells) (IF (cc)), Immunofluorescence (Paraffin-embedded Sections) (IF (p)), Immunohistochemistry (Paraffin-embedded Sections) (IHC (p)), Immunohistochemistry (Frozen Sections) (IHC (fro))

## Product Details

Immunogen:	KLH conjugated synthetic peptide derived from human ADCK2
Isotype:	IgG
Predicted Reactivity:	Human,Mouse,Rat,Cow,Horse,Chicken,Rabbit
Purification:	Purified by Protein A.

## Target Details

Target:	ADCK2
Alternative Name:	Adck2 ( <a href="#">ADCK2 Products</a> )

## Target Details

Background:	<p>Synonyms: AARF, aarF domain containing kinase 2, ADCK2, ADCK2_HUMAN, MGC20727, Uncharacterized aarF domain-containing protein kinase 2.</p> <p>Background: ADCK2 (aarF domain containing kinase 2), also known as AARF, is a 626 amino acid single-pass membrane protein belonging to the protein kinase superfamily and the ADCK protein kinase family. The ADCK family consists of five paralogs in human (ADCK1-5). Encoded by a gene that maps to human chromosome 7q34, ADCK2 contains one protein kinase domain. ADCK2 participates in ATP and nucleotide binding, transferase functions and protein serine/threonine kinase activities. Expression of ADCK2 inversely correlates with cellular viability, suggesting elevated expression of ADCK2 may be essential for tumour survival. ADCK2 is necessary for cell proliferation of glioblastoma multiforme (GBM), a fatal primary brain tumor containing countless genetic and epigenetic alterations.</p>
-------------	------------------------------------------------------------------------------------------------------------------------------------------------------------------------------------------------------------------------------------------------------------------------------------------------------------------------------------------------------------------------------------------------------------------------------------------------------------------------------------------------------------------------------------------------------------------------------------------------------------------------------------------------------------------------------------------------------------------------------------------------------------------------------------------------------------------------------------------------------------------------------------------------------------------------------------------------------------------------

Gene ID:	90956
----------	-------

## Application Details

Application Notes:	<p>WB 1:300-5000</p> <p>ELISA 1:500-1000</p> <p>IHC-P 1:200-400</p> <p>IHC-F 1:100-500</p> <p>IF(IHC-P) 1:50-200</p> <p>IF(IHC-F) 1:50-200</p> <p>IF(ICC) 1:50-200</p>
Restrictions:	For Research Use only

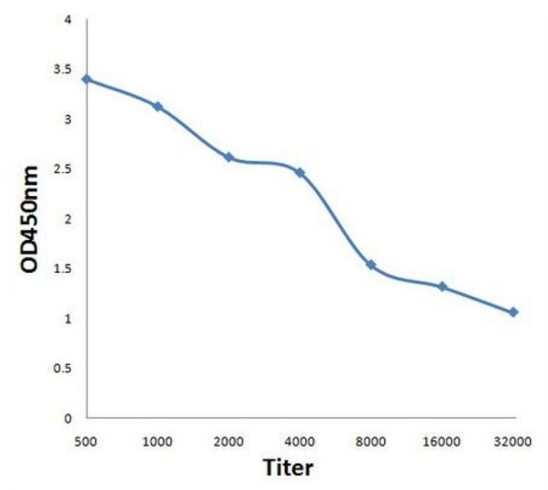
## Handling

Format:	Liquid
Concentration:	1 µg/µL
Buffer:	0.01M TBS( pH 7.4) with 1 % BSA, 0.02 % Proclin300 and 50 % Glycerol.
Preservative:	ProClin
Precaution of Use:	This product contains ProClin: a POISONOUS AND HAZARDOUS SUBSTANCE, which should be handled by trained staff only.
Storage:	4 °C,-20 °C
Storage Comment:	Shipped at 4°C. Store at -20°C for one year. Avoid repeated freeze/thaw cycles.

Handling

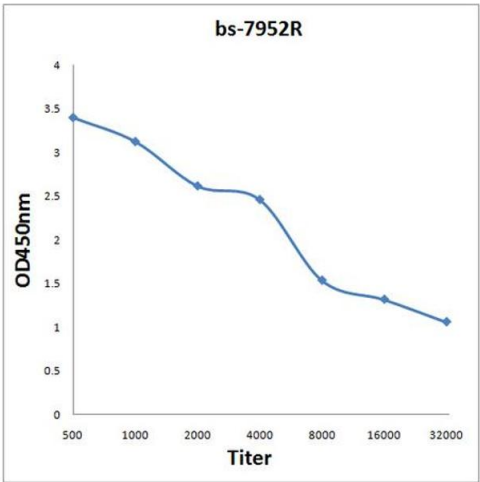
Expiry Date: 12 months

Images



**ELISA**

**Image 1.** Antigen: 0.2ug/100ul, Primary: Antiserum, 1:500, 1:1000, 1:2000, 1:4000, 1:8000, 1:16000, 1:32000, Secondary: HRP conjugated Goat Anti-Rabbit IgG at 1: 5000, TMB staining, Read the data in MicroplateReader by 450nm.



**ELISA**

**Image 2.** Antigen: 0.2 µg/100 µL Primary: Antiserum, 1:500, 1:1000, 1:2000, 1:4000, 1:8000, 1:16000, 1:32000; Secondary: HRP conjugated Goat Anti-Rabbit IgG at 1: 5000; TMB staining; Read the data in MicroplateReader by 450nm.