

Datasheet for ABIN873100
anti-GCKR antibody (AA 121-220)[Go to Product page](#)

1 Image

Overview

Quantity:	100 µL
Target:	GCKR
Binding Specificity:	AA 121-220
Reactivity:	Rat
Host:	Rabbit
Clonality:	Polyclonal
Conjugate:	This GCKR antibody is un-conjugated
Application:	Western Blotting (WB), ELISA, Immunofluorescence (Cultured Cells) (IF (cc)), Immunofluorescence (Paraffin-embedded Sections) (IF (p)), Immunohistochemistry (Paraffin- embedded Sections) (IHC (p)), Immunohistochemistry (Frozen Sections) (IHC (fro))

Product Details

Immunogen:	KLH conjugated synthetic peptide derived from human GCKR
Isotype:	IgG
Cross-Reactivity:	Rat
Predicted Reactivity:	Human,Mouse,Dog,Pig,Horse,Rabbit
Purification:	Purified by Protein A.

Target Details

Target:	GCKR
---------	------

Target Details

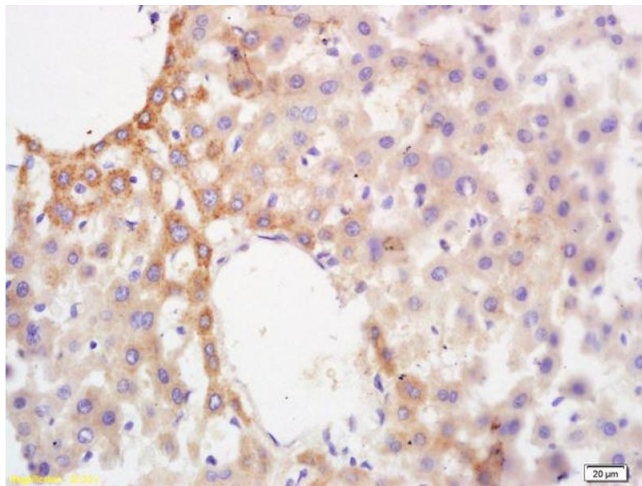
Alternative Name:	Glucokinase regulatory protein (GCKR Products)
Background:	Synonyms: GKRP, FGQTL5, Glucokinase regulatory protein, Glucokinase regulator, GCKR Background: Inhibits glucokinase (GCK) by forming an inactive complex with this enzyme. The affinity of GCKR for GCK is modulated by fructose metabolites: GCKR with bound fructose 6-phosphate has increased affinity for GCK, while GCKR with bound fructose 1-phosphate has strongly decreased affinity for GCK and does not inhibit GCK activity.
Gene ID:	2646
UniProt:	Q14397
Pathways:	Carbohydrate Homeostasis , Regulation of Carbohydrate Metabolic Process , Protein targeting to Nucleus

Application Details

Application Notes:	WB 1:300-5000 ELISA 1:500-1000 IHC-P 1:200-400 IHC-F 1:100-500 IF(IHC-P) 1:50-200 IF(IHC-F) 1:50-200 IF(ICC) 1:50-200
Restrictions:	For Research Use only

Handling

Format:	Liquid
Concentration:	1 µg/µL
Buffer:	0.01M TBS(pH 7.4) with 1 % BSA, 0.02 % Proclin300 and 50 % Glycerol.
Preservative:	ProClin
Precaution of Use:	This product contains ProClin: a POISONOUS AND HAZARDOUS SUBSTANCE, which should be handled by trained staff only.
Storage:	4 °C,-20 °C
Storage Comment:	Shipped at 4°C. Store at -20°C for one year. Avoid repeated freeze/thaw cycles.
Expiry Date:	12 months



Immunohistochemistry

Image 1. Formalin-fixed and paraffin embedded rat liver labeled with Anti GSKR/Glucokinase regulatory protein Polyclonal Antibody, Unconjugated (ABIN873100) at 1:200 followed by conjugation to the secondary antibody and DAB staining