

Datasheet for ABIN873113
anti-FEM1B antibody (AA 531-627)[Go to Product page](#)

1 Image

Overview

Quantity:	100 µL
Target:	FEM1B
Binding Specificity:	AA 531-627
Reactivity:	Rat
Host:	Rabbit
Clonality:	Polyclonal
Conjugate:	This FEM1B antibody is un-conjugated
Application:	ELISA, Immunofluorescence (Cultured Cells) (IF (cc)), Immunofluorescence (Paraffin-embedded Sections) (IF (p)), Immunohistochemistry (Paraffin-embedded Sections) (IHC (p)), Immunohistochemistry (Frozen Sections) (IHC (fro))

Product Details

Immunogen:	KLH conjugated synthetic peptide derived from human FEM 1B
Isotype:	IgG
Cross-Reactivity:	Rat
Predicted Reactivity:	Human,Mouse,Cow,Sheep,Horse,Chicken,Rabbit
Purification:	Purified by Protein A.

Target Details

Target:	FEM1B
---------	-------

Target Details

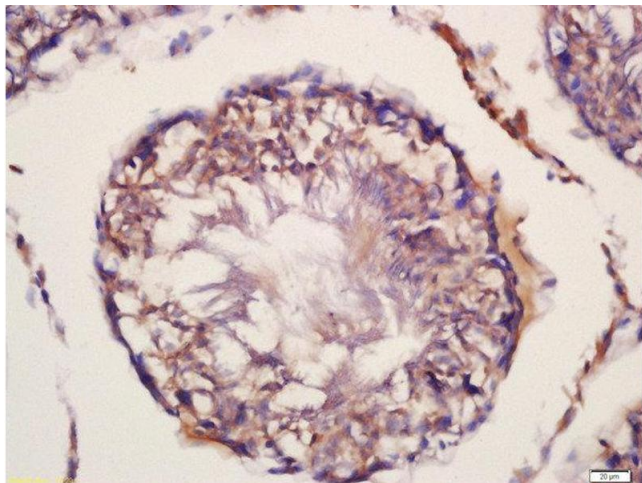
Alternative Name:	FEM 1B (FEM1B Products)
Background:	<p>Synonyms: F1AA, F1A-ALPHA, FEM1-beta, Protein fem-1 homolog B, FEM1b, Fem-1-like death receptor-binding protein alpha, Fem-1-like in apoptotic pathway protein alpha, KIAA0396</p> <p>Background: Component of an E3 ubiquitin-protein ligase complex, in which it may act as a substrate recognition subunit. Involved in apoptosis by acting as a death receptor-associated protein that mediates apoptosis. Also involved in glucose homeostasis in pancreatic islet.</p> <p>Functions as an adapter/mediator in replication stress-induced signaling that leads to the activation of CHEK1.</p>
Gene ID:	10116
UniProt:	Q9UK73

Application Details

Application Notes:	<p>ELISA 1:500-1000</p> <p>IHC-P 1:200-400</p> <p>IHC-F 1:100-500</p> <p>IF(IHC-P) 1:50-200</p> <p>IF(IHC-F) 1:50-200</p> <p>IF(ICC) 1:50-200</p>
Restrictions:	For Research Use only

Handling

Format:	Liquid
Concentration:	1 µg/µL
Buffer:	0.01M TBS(pH 7.4) with 1 % BSA, 0.02 % Proclin300 and 50 % Glycerol.
Preservative:	ProClin
Precaution of Use:	This product contains ProClin: a POISONOUS AND HAZARDOUS SUBSTANCE, which should be handled by trained staff only.
Storage:	4 °C,-20 °C
Storage Comment:	Shipped at 4°C. Store at -20°C for one year. Avoid repeated freeze/thaw cycles.
Expiry Date:	12 months



Immunohistochemistry (Paraffin-embedded Sections)

Image 1. Formalin-fixed and paraffin embedded rat testis labeled with Rabbit Anti-FEM 1B Polyclonal Antibody, Unconjugated (ABIN873113) at 1:200 followed by conjugation to the secondary antibody and DAB staining