

Datasheet for ABIN873118
anti-KLHL3 antibody (AA 51-160)[Go to Product page](#)

1 Image

Overview

Quantity:	100 µL
Target:	KLHL3
Binding Specificity:	AA 51-160
Reactivity:	Human
Host:	Rabbit
Clonality:	Polyclonal
Conjugate:	This KLHL3 antibody is un-conjugated
Application:	Western Blotting (WB), ELISA, Immunofluorescence (Cultured Cells) (IF (cc)), Immunofluorescence (Paraffin-embedded Sections) (IF (p)), Immunohistochemistry (Paraffin-embedded Sections) (IHC (p)), Immunohistochemistry (Frozen Sections) (IHC (fro))

Product Details

Immunogen:	KLH conjugated synthetic peptide derived from human KLHL3
Isotype:	IgG
Cross-Reactivity:	Human
Predicted Reactivity:	Mouse,Rat,Dog,Cow,Sheep,Pig,Horse,Chicken,Rabbit
Purification:	Purified by Protein A.

Target Details

Target:	KLHL3
---------	-------

Target Details

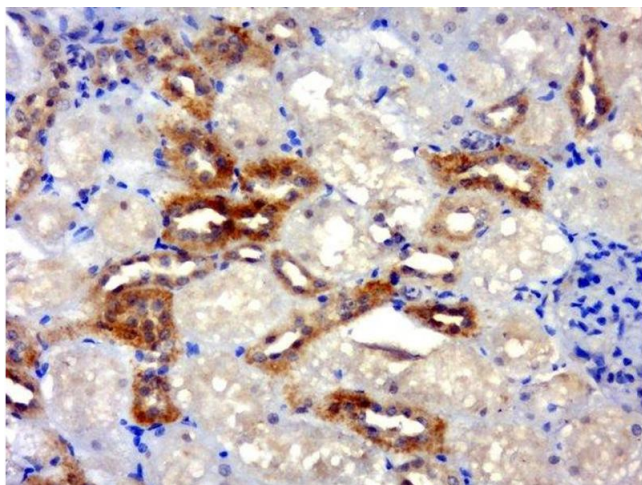
Alternative Name:	KLHL3 (KLHL3 Products)
Background:	<p>Synonyms: KLHL 3, FLJ40871, kelch Drosophila like 3, kelch like 3 Drosophila, kelch like 3, Kelch like protein 3, KIAA1129, MGC44594, KLHL3_HUMAN.</p> <p>Background: KLHL3 protein contains a poxvirus and zinc finger domain at the N-terminus and six tandem repeats (kelch repeats) at the C-terminus. At the amino acid level, KLHL3 shares 77 % similarity with Drosophila kelch and 89 % similarity with Mayven (KLHL2), another human kelch homolog. At least three isoforms are produced and may be the result of alternative promoter usage. The KLHL3 maps within the smallest commonly deleted segment in myeloid leukemias characterized by a deletion of 5q, however, no inactivating mutations of KLHL3 could be detected in malignant myeloid disorders with loss of 5q.</p>
Gene ID:	26249

Application Details

Application Notes:	WB 1:300-5000 ELISA 1:500-1000 IHC-P 1:200-400 IHC-F 1:100-500 IF(IHC-P) 1:50-200 IF(IHC-F) 1:50-200 IF(ICC) 1:50-200
Restrictions:	For Research Use only

Handling

Format:	Liquid
Concentration:	1 µg/µL
Buffer:	0.01M TBS(pH 7.4) with 1 % BSA, 0.02 % Proclin300 and 50 % Glycerol.
Preservative:	ProClin
Precaution of Use:	This product contains ProClin: a POISONOUS AND HAZARDOUS SUBSTANCE, which should be handled by trained staff only.
Storage:	4 °C,-20 °C
Storage Comment:	Shipped at 4°C. Store at -20°C for one year. Avoid repeated freeze/thaw cycles.



Immunohistochemistry (Paraffin-embedded Sections)

Image 1. Paraformaldehyde-fixed, paraffin embedded rat kidney, Antigen retrieval by boiling in sodium citrate buffer (pH6.0) for 15min, Block endogenous peroxidase by 3% hydrogen peroxide for 20 minutes, Blocking buffer (normal goat serum) at 37°C for 30min, Antibody incubation with KLHL3 Polyclonal Antibody, Unconjugated at 1:500 overnight at 4°C, followed by a conjugated secondary for 20 minutes and DAB staining.