



[Go to Product page](#)

Datasheet for ABIN873141
anti-FAM161B antibody (AA 451-560)

1 Image

Overview

Quantity:	100 µL
Target:	FAM161B
Binding Specificity:	AA 451-560
Reactivity:	Rat
Host:	Rabbit
Clonality:	Polyclonal
Conjugate:	This FAM161B antibody is un-conjugated
Application:	Immunofluorescence (Cultured Cells) (IF (cc)), Immunofluorescence (Paraffin-embedded Sections) (IF (p)), ELISA, Immunohistochemistry (Paraffin-embedded Sections) (IHC (p)), Immunohistochemistry (Frozen Sections) (IHC (fro))

Product Details

Immunogen:	KLH conjugated synthetic peptide derived from human FAM161B
Isotype:	IgG
Cross-Reactivity:	Rat
Predicted Reactivity:	Human,Mouse,Dog,Cow,Pig,Horse
Purification:	Purified by Protein A.

Target Details

Target:	FAM161B
---------	---------

Target Details

Alternative Name:	Fam161b (FAM161B Products)
Background:	<p>Synonyms: C14orf44, Chromosome 14 open reading frame 44, Family with sequence similarity 161, member B, FLJ31697, Hypothetical protein LOC145483, Protein FAM161B, F161B_HUMAN.</p> <p>Background: FAM161B is a 647 amino acid protein that belongs to the FAM161 family. The gene that encodes FAM161B consists of approximately 16,413 bases and maps to human chromosome 14q24.3. Housing over 700 genes, chromosome 14 comprises nearly 3.5 % of the human genome. Chromosome 14 encodes the Presenilin 1 (PSEN1) gene, which is one of the three key genes associated with the development of Alzheimer's disease. The SERPINA1 gene is also located on chromosome 14 and, when defective, leads to the genetic disorder 1-antitrypsin deficiency, which is characterized by severe lung complications and liver dysfunction. An inversion of the long arm of chromosome 14 is thought to be involved in T-cell chronic lymphocytic leukemia (CLL), a cancer that affects T lymphocytes.</p>

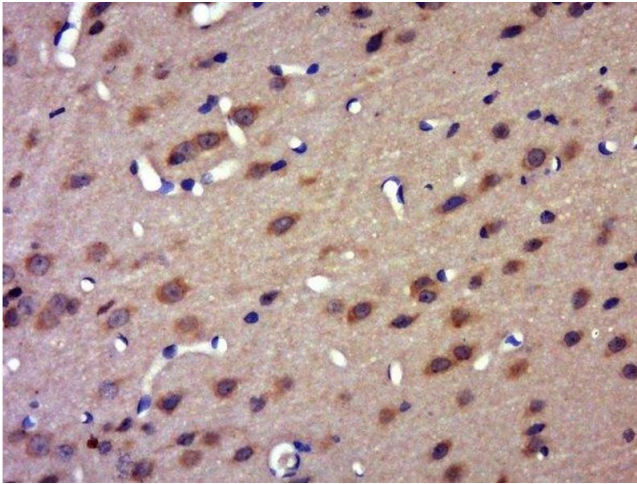
Application Details

Application Notes:	ELISA 1:500-1000 IHC-P 1:200-400 IHC-F 1:100-500 IF(IHC-P) 1:50-200 IF(IHC-F) 1:50-200 IF(ICC) 1:50-200
Restrictions:	For Research Use only

Handling

Format:	Liquid
Concentration:	1 µg/µL
Buffer:	0.01M TBS(pH 7.4) with 1 % BSA, 0.02 % Proclin300 and 50 % Glycerol.
Preservative:	ProClin
Precaution of Use:	This product contains ProClin: a POISONOUS AND HAZARDOUS SUBSTANCE, which should be handled by trained staff only.
Storage:	4 °C,-20 °C
Storage Comment:	Shipped at 4°C. Store at -20°C for one year. Avoid repeated freeze/thaw cycles.

Expiry Date: 12 months



Immunohistochemistry (Paraffin-embedded Sections)

Image 1. Paraformaldehyde-fixed, paraffin embedded rat brain, Antigen retrieval by boiling in sodium citrate buffer (pH6.0) for 15min, Block endogenous peroxidase by 3% hydrogen peroxide for 20 minutes, Blocking buffer (normal goat serum) at 37°C for 30min, Antibody incubation with FAM161B Polyclonal Antibody, Unconjugated at 1:500 overnight at 4°C, followed by a conjugated secondary (sp-0023) for 20 minutes and DAB staining.