

Datasheet for ABIN873146
anti-GAS6 antibody (AA 551-650)[2 Images](#)[2 Publications](#)[Go to Product page](#)

Overview

Quantity:	100 µL
Target:	GAS6
Binding Specificity:	AA 551-650
Reactivity:	Human, Mouse, Pig
Host:	Rabbit
Clonality:	Polyclonal
Conjugate:	This GAS6 antibody is un-conjugated
Application:	Western Blotting (WB), ELISA, Immunofluorescence (Cultured Cells) (IF (cc)), Immunofluorescence (Paraffin-embedded Sections) (IF (p)), Immunohistochemistry (Paraffin- embedded Sections) (IHC (p)), Immunohistochemistry (Frozen Sections) (IHC (fro))

Product Details

Immunogen:	KLH conjugated synthetic peptide derived from human GAS 6
Isotype:	IgG
Cross-Reactivity:	Human, Mouse, Pig
Predicted Reactivity:	Rat,Dog,Cow,Horse,Chicken
Purification:	Purified by Protein A.

Target Details

Target:	GAS6
---------	------

Target Details

Alternative Name:	GAS 6 (GAS6 Products)
Background:	<p>Synonyms: AXSF, AXLLG, Growth arrest-specific protein 6, GAS-6, AXL receptor tyrosine kinase ligand, GAS6</p> <p>Background: Ligand for tyrosine-protein kinase receptors AXL, TYRO3 and MER whose signaling is implicated in cell growth and survival, cell adhesion and cell migration. GAS6/AXL signaling plays a role in various processes such as endothelial cell survival during acidification by preventing apoptosis, optimal cytokine signaling during human natural killer cell development, hepatic regeneration, gonadotropin-releasing hormone neuron survival and migration, platelet activation, or regulation of thrombotic responses.</p>
Gene ID:	2621
UniProt:	Q14393
Pathways:	RTK Signaling , Carbohydrate Homeostasis , Production of Molecular Mediator of Immune Response

Application Details

Application Notes:	WB 1:300-5000 ELISA 1:500-1000 IHC-P 1:200-400 IHC-F 1:100-500 IF(IHC-P) 1:50-200 IF(IHC-F) 1:50-200 IF(ICC) 1:50-200
Restrictions:	For Research Use only

Handling

Format:	Liquid
Concentration:	1 µg/µL
Buffer:	0.01M TBS(pH 7.4) with 1 % BSA, 0.02 % Proclin300 and 50 % Glycerol.
Preservative:	ProClin
Precaution of Use:	This product contains ProClin: a POISONOUS AND HAZARDOUS SUBSTANCE, which should be handled by trained staff only.

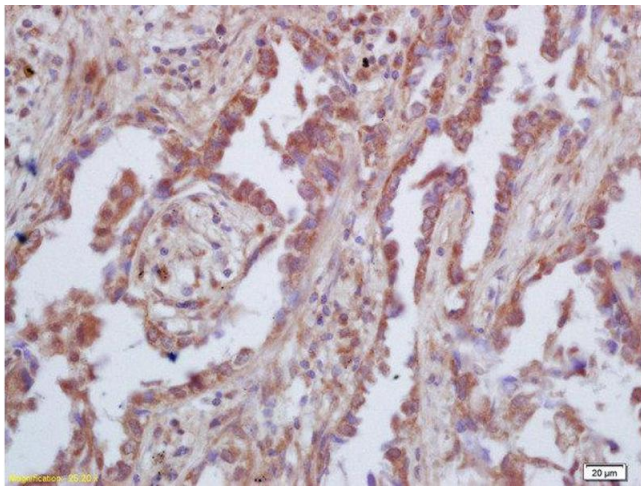
Handling

Storage:	4 °C,-20 °C
Storage Comment:	Shipped at 4°C. Store at -20°C for one year. Avoid repeated freeze/thaw cycles.
Expiry Date:	12 months

Publications

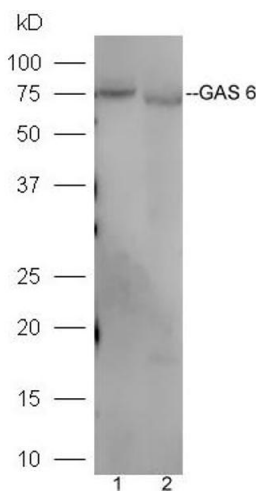
Product cited in: Xu, Jiang, He, He, Ma: "Characterization of porcine GAS6 cDNA gene and its expression analysis in weaned piglets." in: **Genetics and molecular research : GMR**, Vol. 14, Issue 4, pp. 17660-72, (2016) ([PubMed](#)).

Images



Immunohistochemistry (Paraffin-embedded Sections)

Image 1. Formalin-fixed and paraffin embedded human lung carcinoma labeled with Rabbit Anti-GAS 6 Polyclonal Antibody, Unconjugated (ABIN873146) at 1:200 followed by conjugation to the secondary antibody and DAB staining



Western Blotting

Image 2. Lane 1: Mouse liver lysates Lane 2: Mouse kidney lysates probed with Rabbit Anti-GAS 6 Polyclonal Antibody, Unconjugated (ABIN873146) at 1:300 overnight at 4 °C. Followed by a conjugated secondary antibody at 1:5000 for 90 min at 37 °C.