



[Go to Product page](#)

Datasheet for ABIN873193

## anti-Sema4a antibody (AA 361-460)

### 2 Images

#### Overview

|                      |   |
|----------------------|---|
| Quantity:            | 100 µL  |
| Target:              | Sema4a  |
| Binding Specificity: | AA 361-460  |
| Reactivity:          | Human, Mouse  |
| Host:                | Rabbit  |
| Clonality:           | Polyclonal  |
| Conjugate:           | This Sema4a antibody is un-conjugated   |
| Application:         | Western Blotting (WB), ELISA, Immunofluorescence (Paraffin-embedded Sections) (IF (p)), Immunofluorescence (Cultured Cells) (IF (cc)), Immunohistochemistry (Paraffin-embedded Sections) (IHC (p)), Immunocytochemistry (ICC), Immunohistochemistry (Frozen Sections) (IHC (fro)) |

#### Product Details

|                       |  |
|-----------------------|--|
| Immunogen:            | KLH conjugated synthetic peptide derived from human SEMA4A |
| Isotype:              | IgG  |
| Cross-Reactivity:     | Human, Mouse   |
| Predicted Reactivity: | Rat,Dog,Cow,Pig,Rabbit                                     |
| Purification:         | Purified by Protein A.                                     |

#### Target Details

|         |        |
|---------|--------|
| Target: | Sema4a |
|---------|--------|

## Target Details

---

|                   |   |
|-------------------|---|
| Alternative Name: | Sema4a ( <a href="#">Sema4a Products</a> )  |
| Background:       | <p>Synonyms: RP35, SEMB, SEMAB, CORD10, Semaphorin-4A, Semaphorin-B, Sema B, SEMA4A, UNQ783/PRO1317</p> <p>Background: Cell surface receptor for PLXNB1, PLXNB2, PLXNB3 and PLXND1 that plays an important role in cell-cell signaling. Plays a role in priming antigen-specific T-cells, promotes differentiation of Th1 T-helper cells, and thereby contributes to adaptive immunity. Promotes phosphorylation of TIMD2. Inhibits angiogenesis. Promotes axon growth cone collapse. Inhibits axonal extension by providing local signals to specify territories inaccessible for growing axons (By similarity).</p> |
| Gene ID:          | 64218   |
| UniProt:          | <a href="#">Q9H3S1</a>  |

## Application Details

---

|                    |   |
|--------------------|---|
| Application Notes: | <p>WB 1:300-5000</p> <p>ELISA 1:500-1000</p> <p>IHC-P 1:200-400</p> <p>IHC-F 1:100-500</p> <p>IF(IHC-P) 1:50-200</p> <p>IF(IHC-F) 1:50-200</p> <p>IF(ICC) 1:50-200</p> <p>ICC 1:100-500</p> |
| Restrictions:      | For Research Use only   |

## Handling

---

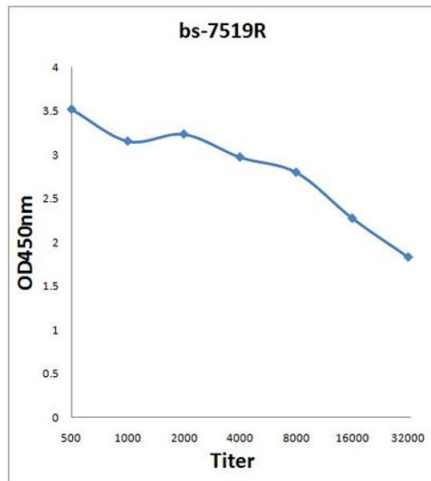
|                    |  |
|--------------------|--|
| Format:            | Liquid   |
| Concentration:     | 1 µg/µL  |
| Buffer:            | 0.01M TBS( pH 7.4) with 1 % BSA, 0.02 % Proclin300 and 50 % Glycerol.  |
| Preservative:      | ProClin  |
| Precaution of Use: | This product contains ProClin: a POISONOUS AND HAZARDOUS SUBSTANCE, which should be handled by trained staff only. |
| Storage:           | 4 °C, -20 °C   |

## Handling

Storage Comment: Shipped at 4°C. Store at -20°C for one year. Avoid repeated freeze/thaw cycles.

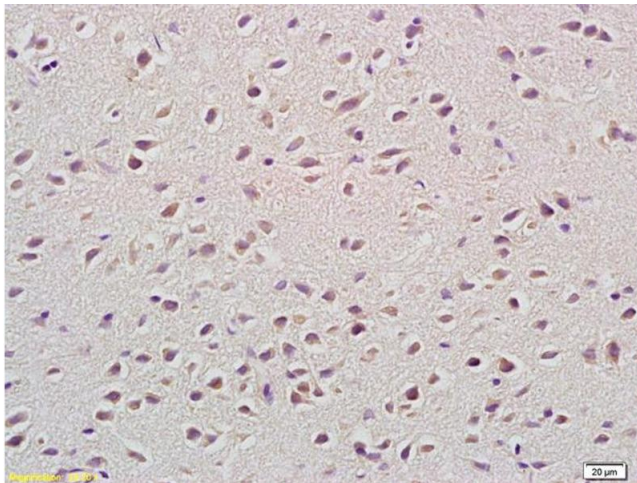
Expiry Date: 12 months

## Images



### ELISA

**Image 1.** Antigen: 2 µg/100 µL Primary: Antiserum, 1:500, 1:1000, 1:2000, 1:4000, 1:8000, 1:16000, 1:32000; Secondary: HRP conjugated Rabbit Anti-Goat IgG at 1: 5000; TMB staining Read the data in Microplate Reader by 450nm.



### Immunohistochemistry

**Image 2.** Formalin-fixed and paraffin embedded rat brain labeled with Anti-SEMA4A Polyclonal Antibody, Unconjugated (ABIN873193) at 1:200 followed by conjugation to the secondary antibody and DAB staining.