

Datasheet for ABIN873223

anti-PPARGC1A antibody (AA 151-250)**2** Images[Go to Product page](#)

Overview

Quantity:	100 µL
Target:	PPARGC1A
Binding Specificity:	AA 151-250
Reactivity:	Human, Rat, Pig
Host:	Rabbit
Clonality:	Polyclonal
Conjugate:	This PPARGC1A antibody is un-conjugated
Application:	Western Blotting (WB), Flow Cytometry (FACS), Immunofluorescence (Cultured Cells) (IF (cc)), Immunofluorescence (Paraffin-embedded Sections) (IF (p)), ELISA, Immunohistochemistry (Frozen Sections) (IHC (fro)), Immunohistochemistry (Paraffin-embedded Sections) (IHC (p))

Product Details

Immunogen:	KLH conjugated synthetic peptide derived from human PGC1 alpha
Isotype:	IgG
Cross-Reactivity:	Human, Pig, Rat
Predicted Reactivity:	Mouse,Dog,Cow,Horse,Rabbit
Purification:	Purified by Protein A.

Target Details

Target:	PPARGC1A
---------	----------

Target Details

Alternative Name:	PGC1 alpha (PPARGC1A Products)
Background:	<p>Synonyms: LEM6, Ligand effect modulator 6, PERC, Peroxisome proliferative activated receptor, gamma, coactivator 1 alpha, Peroxisome proliferative activated receptor, gamma, coactivator 1, Peroxisome proliferator activated receptor gamma coactivator 1 alpha, peroxisome proliferator-activated receptor gamma coactivator 1 beta, Peroxisome proliferator-activated receptor gamma coactivator 1-alpha, Peroxisome proliferator-activated receptor gamma coactivator 1-beta, peroxisome proliferator-activated receptor gamma, coactivator 1 beta, PGC 1 alpha, PGC 1 alpha, PGC 1v, PGC-1beta, PGC-1-alpha, PGC-1-beta, PGC-1-related estrogen receptor alpha coactivator, PGC1, PGC1alpha, PGC1A, PGC1v, PPAR gamma coactivator 1 alpha, PPAR gamma coactivator 1 alpha 3 ligand effect modulator 6, PPAR gamma coactivator 1, PPAR gamma coactivator variant form, PPAR gamma coactivator-1beta, PPAR-gamma coactivator 1-alpha, PPAR-gamma coactivator 1-beta, PPARGC 1 alpha, PPARGC-1-alpha, PPARGC-1-beta, PPARGC1, PPARGC1A, Ppargc1b, PRGC1_HUMAN, PRGC2_HUMAN.</p> <p>Background: The protein encoded by this gene is a transcriptional coactivator that regulates the genes involved in energy metabolism. This protein interacts with PPARgamma, which permits the interaction of this protein with multiple transcription factors. This protein can interact with, and regulate the activities of, cAMP response element binding protein (CREB) and nuclear respiratory factors (NRFs). It provides a direct link between external physiological stimuli and the regulation of mitochondrial biogenesis, and is a major factor that regulates muscle fiber type determination. This protein may be also involved in controlling blood pressure, regulating cellular cholesterol homoeostasis, and the development of obesity. [provided by RefSeq].</p>
Molecular Weight:	91-110kDa
Gene ID:	10891
UniProt:	Q9UBK2
Pathways:	Intracellular Steroid Hormone Receptor Signaling Pathway , Carbohydrate Homeostasis , Regulation of Lipid Metabolism by PPARalpha , Regulation of Carbohydrate Metabolic Process , Smooth Muscle Cell Migration , Brown Fat Cell Differentiation

Application Details

Application Notes:	WB 1:300-5000
	ELISA 1:500-1000
	FCM 1:20-100
	IHC-P 1:200-400

Application Details

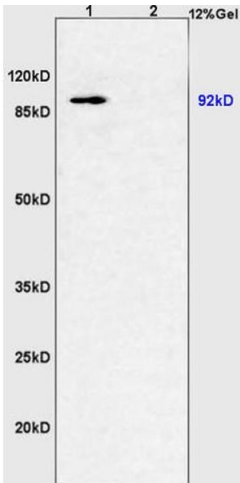
	IHC-F 1:100-500
	IF(IHC-P) 1:50-200
	IF(IHC-F) 1:50-200
	IF(ICC) 1:50-200

Restrictions: For Research Use only

Handling

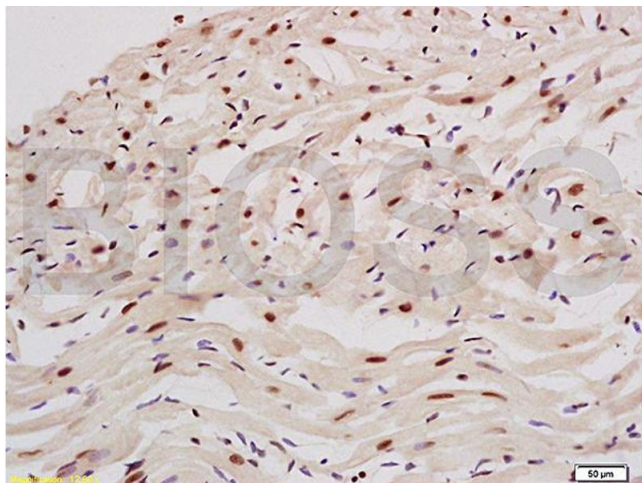
Format:	Liquid
Concentration:	1 µg/µL
Buffer:	0.01M TBS(pH 7.4) with 1 % BSA, 0.02 % Proclin300 and 50 % Glycerol.
Preservative:	ProClin
Precaution of Use:	This product contains ProClin: a POISONOUS AND HAZARDOUS SUBSTANCE, which should be handled by trained staff only.
Storage:	4 °C,-20 °C
Storage Comment:	Shipped at 4°C. Store at -20°C for one year. Avoid repeated freeze/thaw cycles.
Expiry Date:	12 months

Images



SDS-PAGE

Image 1. L1 pig muscles lysates L2 mouse kidney lysates probed with Anti PGC1 alpha + beta Polyclonal Antibody, Unconjugated (ABIN873223) at 1:200 overnight at 4 °C. Followed by conjugation to secondary antibody at 1:3000 for 90 min at 37 °C. Predicted band 91-110kD. Observed band size: 92kD.



Immunohistochemistry

Image 2. Formalin-fixed and paraffin embedded rat heart tissue labeled with Anti-PGC1 alpha+beta Polyclonal Antibody, Unconjugated (ABIN873223) at 1:200 followed by conjugation to the secondary antibody and DAB staining