



[Go to Product page](#)

Datasheet for ABIN873224  
**anti-CCDC30 antibody (AA 601-700)**

1 Image

Overview

Quantity:	100 µL
Target:	CCDC30
Binding Specificity:	AA 601-700
Reactivity:	Human
Host:	Rabbit
Clonality:	Polyclonal
Conjugate:	This CCDC30 antibody is un-conjugated
Application:	Western Blotting (WB), Immunofluorescence (Cultured Cells) (IF (cc)), Immunofluorescence (Paraffin-embedded Sections) (IF (p)), ELISA, Immunohistochemistry (Frozen Sections) (IHC (fro)), Immunohistochemistry (Paraffin-embedded Sections) (IHC (p))

Product Details

Immunogen:	KLH conjugated synthetic peptide derived from human CCDC30
Isotype:	IgG
Cross-Reactivity:	Human
Purification:	Purified by Protein A.

Target Details

Target:	CCDC30
Alternative Name:	CCDC30 ( <a href="#">CCDC30 Products</a> )

## Target Details

---

Background: Synonyms: PFD6L, PFDN6L, Coiled-coil domain-containing protein 30, Prefoldin subunit 6-like protein, CCDC30  
Background: Coiled-coil domain-containing protein 30.

---

Gene ID: 728621

---

UniProt: [Q5VVM6](#)

---

## Application Details

---

Application Notes: WB 1:300-5000  
ELISA 1:500-1000  
IHC-P 1:200-400  
IHC-F 1:100-500  
IF(IHC-P) 1:50-200  
IF(IHC-F) 1:50-200  
IF(ICC) 1:50-200

---

Restrictions: For Research Use only

---

## Handling

---

Format: Liquid

---

Concentration: 1 µg/µL

---

Buffer: 0.01M TBS( pH 7.4) with 1 % BSA, 0.02 % Proclin300 and 50 % Glycerol.

---

Preservative: ProClin

---

Precaution of Use: This product contains ProClin: a POISONOUS AND HAZARDOUS SUBSTANCE, which should be handled by trained staff only.

---

Storage: 4 °C,-20 °C

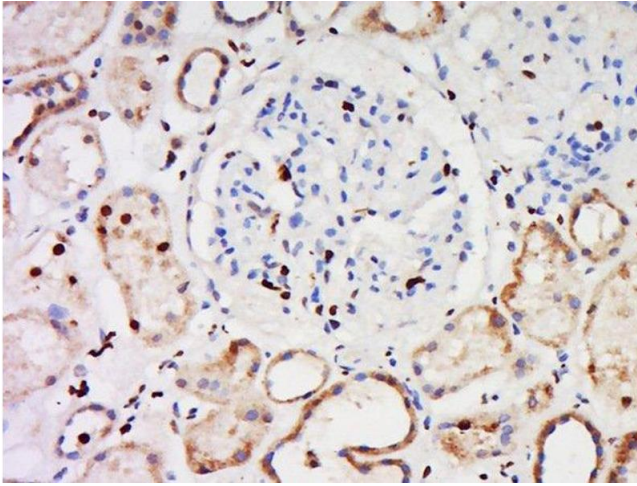
---

Storage Comment: Shipped at 4°C. Store at -20°C for one year. Avoid repeated freeze/thaw cycles.

---

Expiry Date: 12 months

---



#### Immunohistochemistry (Paraffin-embedded Sections)

**Image 1.** Paraformaldehyde-fixed, paraffin embedded human kidney, Antigen retrieval by boiling in sodium citrate buffer (pH6) for 15min, Block endogenous peroxidase by 3% hydrogen peroxide for 30 minutes, Blocking buffer (normal goat serum) at 37°C for 20min, Antibody incubation with CCDC30 Polyclonal Antibody, Unconjugated at 1:500 overnight at 4°C, followed by a conjugated secondary and DAB staining