



[Go to Product page](#)

Datasheet for ABIN873226  
**anti-ZHX2 antibody (AA 451-550)**

2 Images

Overview

Quantity:	100 µL
Target:	ZHX2
Binding Specificity:	AA 451-550
Reactivity:	Rat
Host:	Rabbit
Clonality:	Polyclonal
Conjugate:	This ZHX2 antibody is un-conjugated
Application:	Western Blotting (WB), ELISA, Immunofluorescence (Cultured Cells) (IF (cc)), Immunofluorescence (Paraffin-embedded Sections) (IF (p)), Immunohistochemistry (Paraffin-embedded Sections) (IHC (p)), Immunohistochemistry (Frozen Sections) (IHC (fro))

Product Details

Immunogen:	KLH conjugated synthetic peptide derived from human ZHX2
Isotype:	IgG
Specificity:	May have slight cross reactivity with ZHX1 and ZHX3 due to 70 % sequence similarity.
Cross-Reactivity:	Rat
Predicted Reactivity:	Human,Mouse,Dog,Cow,Pig,Horse,Chicken
Purification:	Purified by Protein A.

## Target Details

---

Target:	ZHX2
Alternative Name:	ZHX2 ( <a href="#">ZHX2 Products</a> )
Background:	Synonyms: RAF, AFR1, Zinc fingers and homeoboxes protein 2, Alpha-fetoprotein regulator 1, AFP regulator 1, Regulator of AFP, Zinc finger and homeodomain protein 2, ZHX2, KIAA0854 Background: Acts as a transcriptional repressor. Represses the promoter activity of the CDC25C gene stimulated by NFYA.
Gene ID:	22882
UniProt:	<a href="#">Q9Y6X8</a>
Pathways:	<a href="#">Stem Cell Maintenance</a>

## Application Details

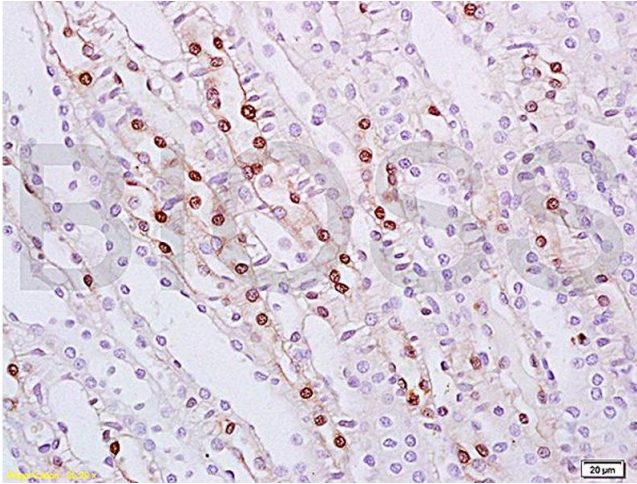
---

Application Notes:	WB 1:300-5000 ELISA 1:500-1000 IHC-P 1:200-400 IHC-F 1:100-500 IF(IHC-P) 1:50-200 IF(IHC-F) 1:50-200 IF(ICC) 1:50-200
Restrictions:	For Research Use only

## Handling

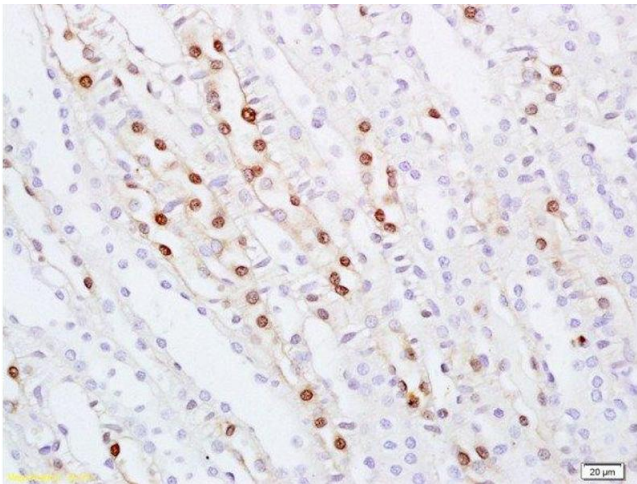
---

Format:	Liquid
Concentration:	1 µg/µL
Buffer:	0.01M TBS( pH 7.4) with 1 % BSA, 0.02 % Proclin300 and 50 % Glycerol.
Preservative:	ProClin
Precaution of Use:	This product contains ProClin: a POISONOUS AND HAZARDOUS SUBSTANCE, which should be handled by trained staff only.
Storage:	4 °C, -20 °C
Storage Comment:	Shipped at 4°C. Store at -20°C for one year. Avoid repeated freeze/thaw cycles.
Expiry Date:	12 months



### Immunohistochemistry

**Image 1.** Formalin-fixed and paraffin embedded rat kidney tissue labeled with Anti ZHX2/Alpha fetoprotein regulator 1 Polyclonal Antibody, Unconjugated (ABIN873226) at 1:100 followed by conjugation to the secondary antibody and DAB staining



### Immunohistochemistry (Paraffin-embedded Sections)

**Image 2.** Formalin-fixed and paraffin embedded rat kidney tissue labeled with Anti ZHX2/Alpha fetoprotein regulator 1 Polyclonal Antibody, Unconjugated at 1:100 followed by conjugation to the secondary antibody and DAB staining