



[Go to Product page](#)

Datasheet for ABIN873234
anti-Mps1 antibody (AA 601-700)

2 Images

Overview

Quantity:	100 µL
Target:	Mps1 (TTK)
Binding Specificity:	AA 601-700
Reactivity:	Human
Host:	Rabbit
Clonality:	Polyclonal
Conjugate:	This Mps1 antibody is un-conjugated
Application:	Western Blotting (WB), ELISA, Immunohistochemistry (Paraffin-embedded Sections) (IHC (p)), Immunofluorescence (Cultured Cells) (IF (cc)), Immunofluorescence (Paraffin-embedded Sections) (IF (p)), Immunohistochemistry (Frozen Sections) (IHC (fro))

Product Details

Immunogen:	KLH conjugated synthetic peptide derived from human TTK
Isotype:	IgG
Predicted Reactivity:	Human,Mouse,Rat,Dog,Cow,Pig,Rabbit
Purification:	Purified by Protein A.

Target Details

Target:	Mps1 (TTK)
Alternative Name:	MPS1 (TTK Products)

Target Details

Background: Synonyms: ESK, PYT, CT96, MPH1, MPS1, MPS1L1, Dual specificity protein kinase TTK, Phosphotyrosine picked threonine-protein kinase, TTK
Background: Phosphorylates proteins on serine, threonine, and tyrosine. Probably associated with cell proliferation. Essential for chromosome alignment by enhancing AURKB activity (via direct CDCA8 phosphorylation) at the centromere, and for the mitotic checkpoint.

Gene ID: 7272

UniProt: [P33981](#)

Application Details

Application Notes: WB 1:300-5000
ELISA 1:500-1000
IHC-P 1:200-400
IHC-F 1:100-500
IF(IHC-P) 1:50-200
IF(IHC-F) 1:50-200
IF(ICC) 1:50-200

Restrictions: For Research Use only

Handling

Format: Liquid

Concentration: 1 µg/µL

Buffer: 0.01M TBS(pH 7.4) with 1 % BSA, 0.02 % Proclin300 and 50 % Glycerol.

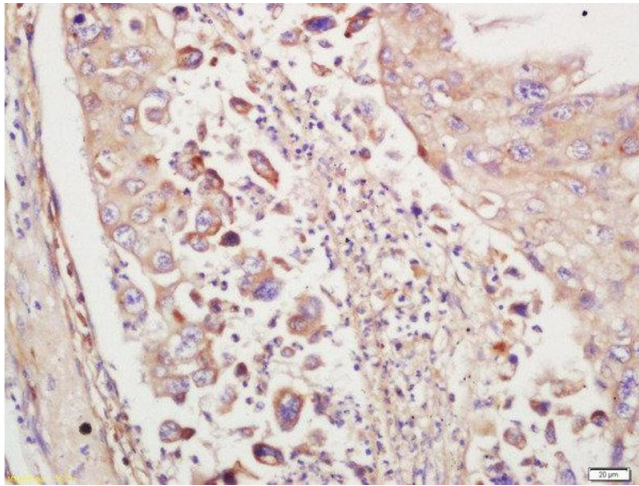
Preservative: ProClin

Precaution of Use: This product contains ProClin: a POISONOUS AND HAZARDOUS SUBSTANCE, which should be handled by trained staff only.

Storage: 4 °C, -20 °C

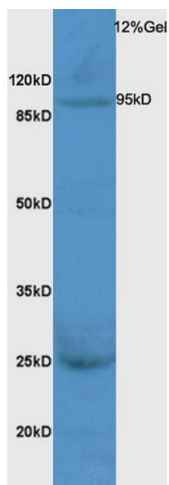
Storage Comment: Shipped at 4°C. Store at -20°C for one year. Avoid repeated freeze/thaw cycles.

Expiry Date: 12 months



Immunohistochemistry (Paraffin-embedded Sections)

Image 1. Formalin-fixed and paraffin embedded human lung carcinoma labeled with Rabbit Anti-MPS1 Polyclonal Antibody, Unconjugated at 1:200 followed by conjugation to the secondary antibody and DAB staining



SDS-PAGE

Image 2. Rat liver lysates probed with Anti MPS1 Polyclonal Antibody, Unconjugated (ABIN873234) at 1:200 overnight at 4 °C. Followed by conjugation to secondary antibody at 1:3000 for 90 min at 37 °C. Predicted band 95kD. Observed band size: 25kD, 95kD