

Datasheet for ABIN873236
anti-ARMC3 antibody (AA 752-840)

3 Images

[Go to Product page](#)

Overview

Quantity:	100 µL
Target:	ARMC3
Binding Specificity:	AA 752-840
Reactivity:	Human, Mouse
Host:	Rabbit
Clonality:	Polyclonal
Conjugate:	This ARMC3 antibody is un-conjugated
Application:	Immunofluorescence (Cultured Cells) (IF (cc)), Immunofluorescence (Paraffin-embedded Sections) (IF (p)), ELISA, Immunohistochemistry (Paraffin-embedded Sections) (IHC (p)), Immunohistochemistry (Frozen Sections) (IHC (fro))

Product Details

Immunogen:	KLH conjugated synthetic peptide derived from human ARMC3
Isotype:	IgG
Cross-Reactivity:	Human, Mouse
Predicted Reactivity:	Rat,Dog,Sheep,Pig
Purification:	Purified by Protein A.

Target Details

Target:	ARMC3
---------	-------

Target Details

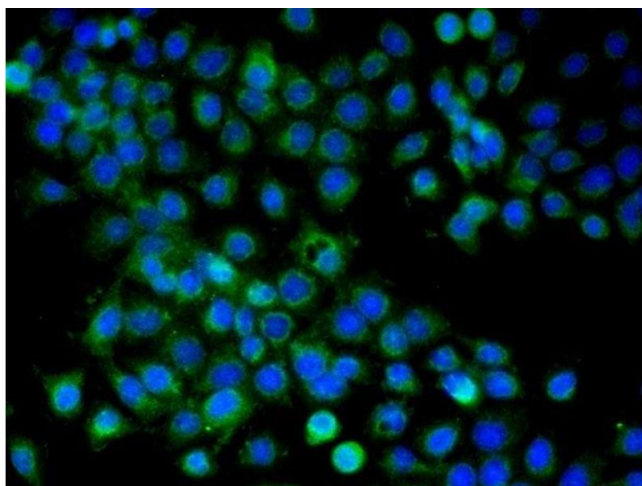
Alternative Name:	ARMC3 (ARMC3 Products)
Background:	<p>Synonyms: CT81, KU-CT-1, Armadillo repeat-containing protein 3, Beta-catenin-like protein, Cancer/testis antigen 81, ARMC3</p> <p>Background: ARMC3 contains 12 ARM repeats. ARM (Armadillo/beta-catenin-like) domains are imperfect 45-amino acid repeats involved in protein-protein interactions. ARM domain-containing proteins, such as ARMC3, function in signal transduction, development, cell adhesion and mobility, and tumor initiation and metastasis. The specific function of ARMC3 is not yet known.</p>
Gene ID:	219681
UniProt:	Q5W041

Application Details

Application Notes:	<p>ELISA 1:500-1000</p> <p>IHC-P 1:200-400</p> <p>IHC-F 1:100-500</p> <p>IF(IHC-P) 1:50-200</p> <p>IF(IHC-F) 1:50-200</p> <p>IF(ICC) 1:50-200</p>
Restrictions:	For Research Use only

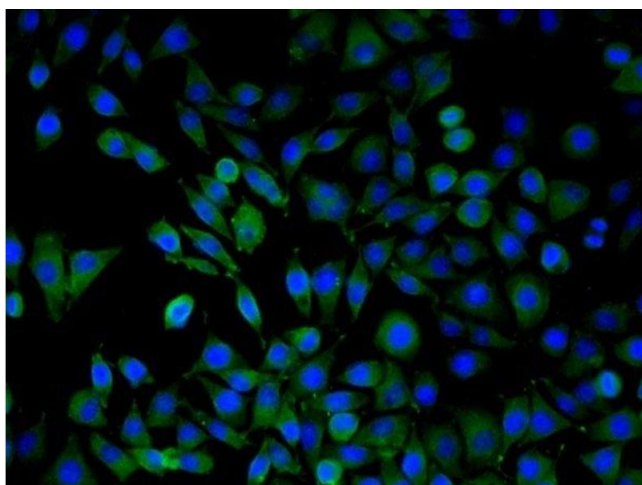
Handling

Format:	Liquid
Concentration:	1 µg/µL
Buffer:	0.01M TBS(pH 7.4) with 1 % BSA, 0.02 % Proclin300 and 50 % Glycerol.
Preservative:	ProClin
Precaution of Use:	This product contains ProClin: a POISONOUS AND HAZARDOUS SUBSTANCE, which should be handled by trained staff only.
Storage:	4 °C,-20 °C
Storage Comment:	Shipped at 4°C. Store at -20°C for one year. Avoid repeated freeze/thaw cycles.
Expiry Date:	12 months



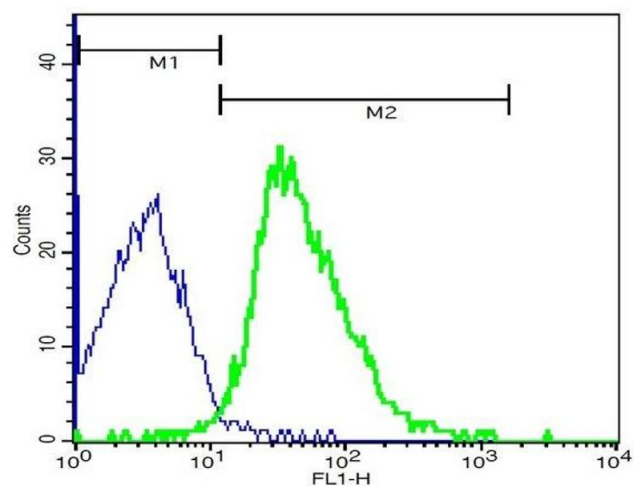
Immunofluorescence (Cultured Cells)

Image 1. Validation submitted by One World Lab. A431 cells were stained with ARMC3 Polyclonal Antibody, Unconjugated at 1:100 in PBS and incubated for one hour at room temperature, followed by secondary antibody incubation, DAPI staining of the nuclei and detection.



Immunofluorescence (Cultured Cells)

Image 2. SMMC7721 cells were stained with ARMC3 Polyclonal Antibody, Unconjugated at 1:50 in PBS and incubated for one hour at room temperature, followed by secondary antibody incubation, DAPI staining of the nuclei and detection.



Flow Cytometry

Image 3. Mouse thymocytes probed with Rabbit Anti-ARMC3 (Cancer/testis antigen 81) Polyclonal Antibody, FITC Conjugated (ABIN873236-FITC) at 1:100 for 40 minutes (green) compared to control cells (blue).