

Datasheet for ABIN873254

anti-Protein Rta/BRLF1 antibody (AA 81-180)**2** Images[Go to Product page](#)

Overview

Quantity:	100 µL
Target:	Protein Rta/BRLF1 (BRLF1)
Binding Specificity:	AA 81-180
Reactivity:	Virus, Human
Host:	Rabbit
Clonality:	Polyclonal
Conjugate:	This Protein Rta/BRLF1 antibody is un-conjugated
Application:	Western Blotting (WB), Immunohistochemistry (Paraffin-embedded Sections) (IHC (p)), ELISA

Product Details

Immunogen:	KLH conjugated synthetic peptide derived from Epstein-Barr virus Replication and transcription activator
Isotype:	IgG
Cross-Reactivity:	Human, Virus
Cross-Reactivity (Details):	HHV4tp2
Purification:	Purified by Protein A.

Target Details

Target:	Protein Rta/BRLF1 (BRLF1)
Alternative Name:	BRLF1 (BRLF1 Products)

Target Details

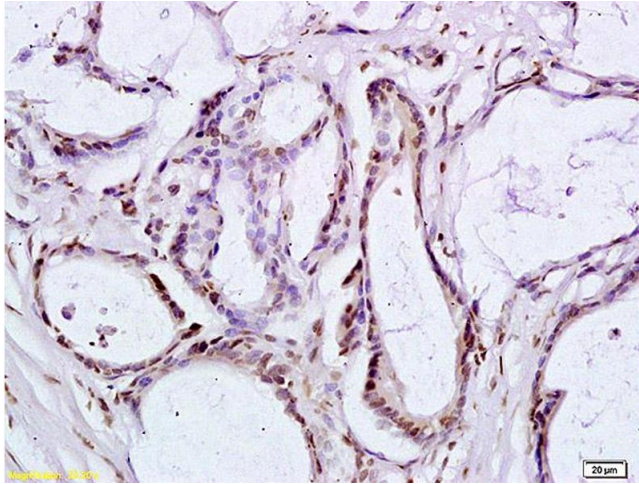
Target Type:	Viral Protein
Background:	Synonyms: Replication and transcription activator, Rta, Immediate-early protein Rta, BRLF1 Background: Immediate-early transcription factor that controls the initiation of viral lytic gene expression and lytic reactivation from latency. Triggers lytic replication, and initiates a cellular senescence program in epithelial cells. Upregulates human DCR3/TNFRSF6B by directly binding to its receptor.
Gene ID:	3783727
UniProt:	P03209

Application Details

Application Notes:	WB 1:300-5000 ELISA 1:500-1000 IHC-P 1:200-400
Restrictions:	For Research Use only

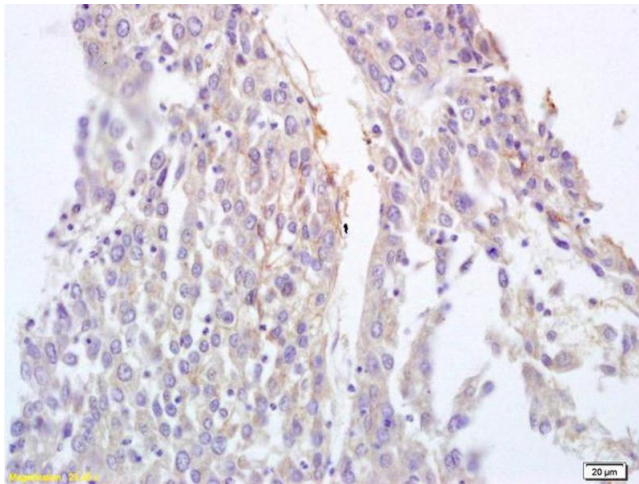
Handling

Format:	Liquid
Concentration:	1 µg/µL
Buffer:	0.01M TBS(pH 7.4) with 1 % BSA, 0.02 % Proclin300 and 50 % Glycerol.
Preservative:	ProClin
Precaution of Use:	This product contains ProClin: a POISONOUS AND HAZARDOUS SUBSTANCE, which should be handled by trained staff only.
Storage:	4 °C,-20 °C
Storage Comment:	Shipped at 4°C. Store at -20°C for one year. Avoid repeated freeze/thaw cycles.
Expiry Date:	12 months



Immunohistochemistry

Image 1. Formalin-fixed and paraffin embedded human colon carcinoma labeled with Anti-BRLF1 Polyclonal Antibody, Unconjugated (ABIN873254) at 1:200 followed by conjugation to the secondary antibody and DAB staining.



Immunohistochemistry

Image 2. Formalin-fixed and paraffin embedded human lung carcinoma labeled with Anti-BRLF1 Polyclonal Antibody, Unconjugated (ABIN873254) at 1:200 followed by conjugation to the secondary antibody and DAB staining.