

Datasheet for ABIN873267
anti-SRRM2 antibody (AA 101-230)[Go to Product page](#)

3 Images

Overview

Quantity:	100 µL
Target:	SRRM2
Binding Specificity:	AA 101-230
Reactivity:	Mouse
Host:	Rabbit
Clonality:	Polyclonal
Conjugate:	This SRRM2 antibody is un-conjugated
Application:	ELISA, Immunohistochemistry (Paraffin-embedded Sections) (IHC (p)), Immunofluorescence (Cultured Cells) (IF (cc)), Immunofluorescence (Paraffin-embedded Sections) (IF (p)), Immunohistochemistry (Frozen Sections) (IHC (fro))

Product Details

Immunogen:	KLH conjugated synthetic peptide derived from human SRRM2
Isotype:	IgG
Cross-Reactivity:	Mouse
Predicted Reactivity:	Human,Rat,Dog,Cow,Pig,Rabbit
Purification:	Purified by Protein A.

Target Details

Target:	SRRM2
---------	-------

Target Details

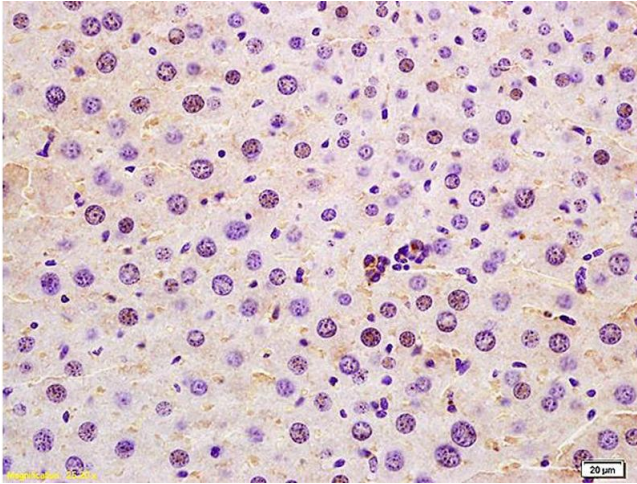
Alternative Name:	SRRM2 (SRRM2 Products)
Background:	<p>Synonyms: Serine/arginine repetitive matrix protein 2, 300 kDa nuclear matrix antigen, Serine/arginine-rich splicing factor-related nuclear matrix protein of 300 kDa, SR-related nuclear matrix protein of 300 kDa, Ser/Arg-related nuclear matrix protein of 300 kDa, Splicing coactivator subunit SRm300, Tax-responsive enhancer element-binding protein 803, TaxREB803, SRRM2, KIAA0324, SRL300, SRM300, HSPC075</p> <p>Background: Involved in pre-mRNA splicing. May function at or prior to the first catalytic step of splicing at the catalytic center of the spliceosome. May do so by stabilizing the catalytic center or the position of the RNA substrate (By similarity). Binds to RNA.</p>
Gene ID:	23524
UniProt:	Q9UQ35

Application Details

Application Notes:	<p>ELISA 1:500-1000</p> <p>IHC-P 1:200-400</p> <p>IHC-F 1:100-500</p> <p>IF(IHC-P) 1:50-200</p> <p>IF(IHC-F) 1:50-200</p> <p>IF(ICC) 1:50-200</p>
Restrictions:	For Research Use only

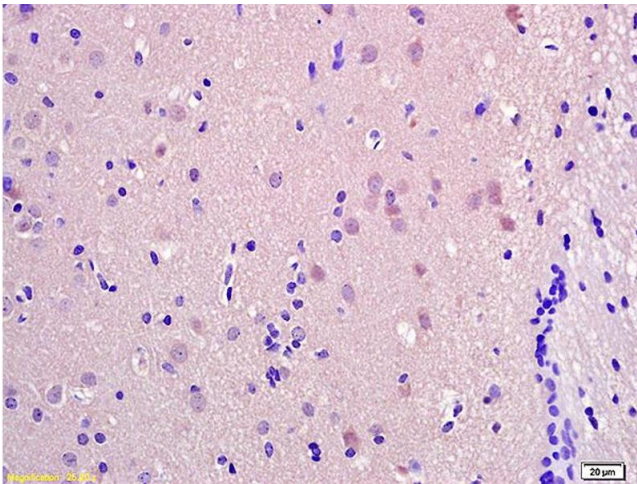
Handling

Format:	Liquid
Concentration:	1 µg/µL
Buffer:	0.01M TBS(pH 7.4) with 1 % BSA, 0.02 % Proclin300 and 50 % Glycerol.
Preservative:	ProClin
Precaution of Use:	This product contains ProClin: a POISONOUS AND HAZARDOUS SUBSTANCE, which should be handled by trained staff only.
Storage:	4 °C,-20 °C
Storage Comment:	Shipped at 4°C. Store at -20°C for one year. Avoid repeated freeze/thaw cycles.
Expiry Date:	12 months



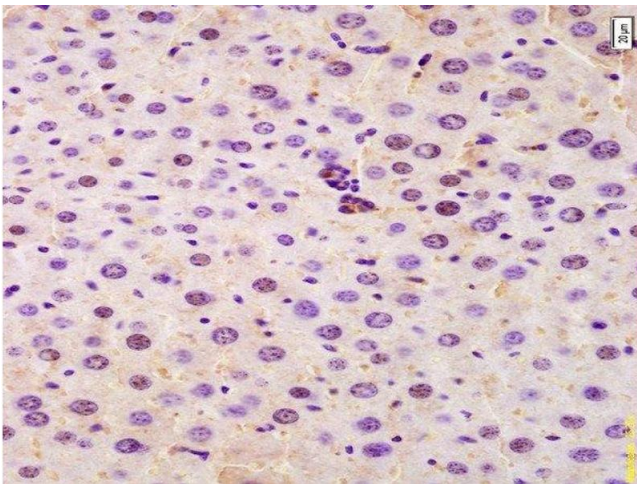
Immunohistochemistry

Image 1. Formalin-fixed and paraffin embedded mouse liver labeled with Anti-SRRM2 Polyclonal Antibody, Unconjugated (ABIN873267) at 1:200 followed by conjugation to the secondary antibody and DAB staining.



Immunohistochemistry

Image 2. Formalin-fixed and paraffin embedded rat brain labeled with Anti-SRRM2 Polyclonal Antibody, Unconjugated (ABIN873267) at 1:200 followed by conjugation to the secondary antibody and DAB staining.



Immunohistochemistry (Paraffin-embedded Sections)

Image 3. Formalin-fixed and paraffin embedded mouse liver labeled with Anti-SRRM2 Polyclonal Antibody, Unconjugated at 1:200 followed by conjugation to the secondary antibody and DAB staining.