

Datasheet for ABIN873301  
**anti-CDC14B antibody (AA 65-160)**[Go to Product page](#)

## 1 Image

## Overview

Quantity:	100 µL
Target:	CDC14B
Binding Specificity:	AA 65-160
Reactivity:	Human, Mouse, Rat
Host:	Rabbit
Clonality:	Polyclonal
Conjugate:	This CDC14B antibody is un-conjugated
Application:	Immunofluorescence (Cultured Cells) (IF (cc)), Immunofluorescence (Paraffin-embedded Sections) (IF (p)), ELISA, Immunohistochemistry (Frozen Sections) (IHC (fro)), Immunohistochemistry (Paraffin-embedded Sections) (IHC (p))

## Product Details

Immunogen:	KLH conjugated synthetic peptide derived from human CDC14B
Isotype:	IgG
Cross-Reactivity:	Human, Mouse, Rat
Predicted Reactivity:	Rabbit
Purification:	Purified by Protein A.

## Target Details

Target:	CDC14B
---------	--------

## Target Details

Alternative Name:	CDC14B ( <a href="#">CDC14B Products</a> )
Background:	<p>Synonyms: CDC14B3, Cdc14B1, Cdc14B2, hCDC14B, Dual specificity protein phosphatase CDC14B, CDC14 cell division cycle 14 homolog B, CDC14B</p> <p>Background: Dual-specificity phosphatase involved in DNA damage response. Essential regulator of the G2 DNA damage checkpoint: following DNA damage, translocates to the nucleus and dephosphorylates FZR1/CDH1, a key activator of the anaphase promoting complex/cyclosome (APC/C). Dephosphorylates SIRT2 around early anaphase.</p> <p>Dephosphorylation of FZR1/CDH1 activates the APC/C, leading to the ubiquitination of PLK1, preventing entry into mitosis. Preferentially dephosphorylates proteins modified by proline-directed kinases.</p>
Gene ID:	8555
UniProt:	<a href="#">O60729</a>

## Application Details

Application Notes:	ELISA 1:500-1000 IHC-P 1:200-400 IHC-F 1:100-500 IF(IHC-P) 1:50-200 IF(IHC-F) 1:50-200 IF(ICC) 1:50-200
Restrictions:	For Research Use only

## Handling

Format:	Liquid
Concentration:	1 µg/µL
Buffer:	0.01M TBS( pH 7.4) with 1 % BSA, 0.02 % Proclin300 and 50 % Glycerol.
Preservative:	ProClin
Precaution of Use:	This product contains ProClin: a POISONOUS AND HAZARDOUS SUBSTANCE, which should be handled by trained staff only.
Storage:	4 °C,-20 °C
Storage Comment:	Shipped at 4°C. Store at -20°C for one year. Avoid repeated freeze/thaw cycles.

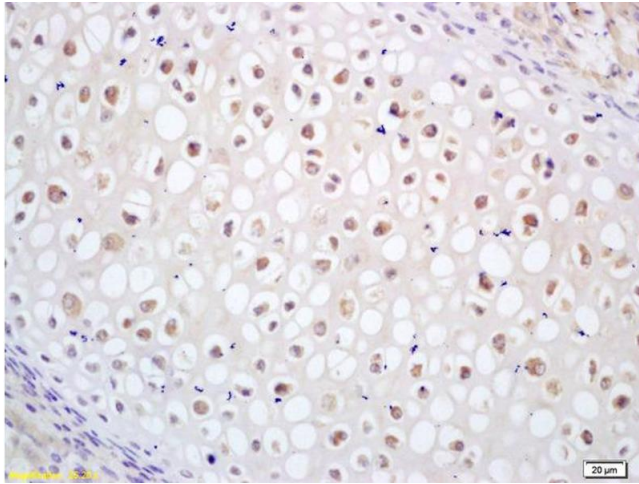
## Handling

---

Expiry Date: 12 months

## Images

---



### Immunohistochemistry

**Image 1.** Formalin-fixed and paraffin embedded mouse embryo labeled with Rabbit Anti CDC14B Polyclonal Antibody, Unconjugated (ABIN873301) at 1:200 followed by conjugation to the secondary antibody and DAB staining