



Datasheet for ABIN873321
anti-SPAG8 antibody (AA 342-426)



[Go to Product page](#)

1 Image

Overview

Quantity:	100 µL
Target:	SPAG8
Binding Specificity:	AA 342-426
Reactivity:	Human
Host:	Rabbit
Clonality:	Polyclonal
Conjugate:	This SPAG8 antibody is un-conjugated
Application:	ELISA, Immunofluorescence (Cultured Cells) (IF (cc)), Immunofluorescence (Paraffin-embedded Sections) (IF (p)), Immunohistochemistry (Paraffin-embedded Sections) (IHC (p)), Immunohistochemistry (Frozen Sections) (IHC (fro))

Product Details

Immunogen:	KLH conjugated synthetic peptide derived from human SPAG8
Isotype:	IgG
Predicted Reactivity:	Human,Mouse,Rat,Pig,Horse
Purification:	Purified by Protein A.

Target Details

Target:	SPAG8
Alternative Name:	SPAG8 (SPAG8 Products)

Target Details

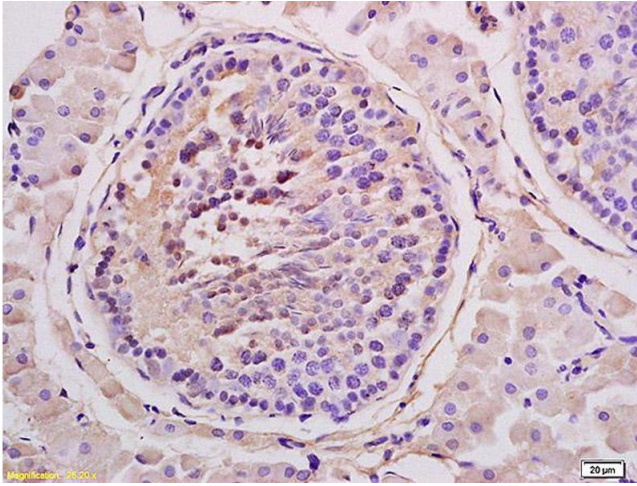
Background:	Synonyms: SMP1, BS-84, CT142, HSD-1, SPAG3, CILD28, hSMP-1, Sperm-associated antigen 8, Sperm membrane protein 1, SMP-1, Sperm membrane protein BS-84, SPAG8 Background: May play a role in fertility and microtubule formation through interaction with RANBP9.
Gene ID:	26206
UniProt:	Q99932

Application Details

Application Notes:	ELISA 1:500-1000 IHC-P 1:200-400 IHC-F 1:100-500 IF(IHC-P) 1:50-200 IF(IHC-F) 1:50-200 IF(ICC) 1:50-200
Restrictions:	For Research Use only

Handling

Format:	Liquid
Concentration:	1 µg/µL
Buffer:	0.01M TBS(pH 7.4) with 1 % BSA, 0.02 % Proclin300 and 50 % Glycerol.
Preservative:	ProClin
Precaution of Use:	This product contains ProClin: a POISONOUS AND HAZARDOUS SUBSTANCE, which should be handled by trained staff only.
Storage:	4 °C,-20 °C
Storage Comment:	Shipped at 4°C. Store at -20°C for one year. Avoid repeated freeze/thaw cycles.
Expiry Date:	12 months



Immunohistochemistry

Image 1. Formalin-fixed and paraffin embedded rat testis labeled with Anti SPAG8 Polyclonal Antibody, Unconjugated (ABIN873321) at 1:200 followed by conjugation to the secondary antibody and DAB staining