



Datasheet for ABIN886092

anti-CACNA1G antibody (AA 901-1000) (Alexa Fluor 488)



[Go to Product page](#)

1 Image

Overview

Quantity:	100 µL
Target:	CACNA1G
Binding Specificity:	AA 901-1000
Reactivity:	Mouse, Human, Rat
Host:	Rabbit
Clonality:	Polyclonal
Conjugate:	This CACNA1G antibody is conjugated to Alexa Fluor 488
Application:	Flow Cytometry (FACS), Immunofluorescence (Cultured Cells) (IF (cc)), Immunofluorescence (Paraffin-embedded Sections) (IF (p))

Product Details

Immunogen:	KLH conjugated synthetic peptide derived from human CACNA1G/Cav31
Isotype:	IgG
Specificity:	Possible cross-reactivity with CACNA1H and CACNA1I
Cross-Reactivity:	Human, Mouse, Rat
Predicted Reactivity:	Dog,Cow,Pig,Guinea Pig
Purification:	Purified by Protein A.

Target Details

Target:	CACNA1G
---------	---------

Target Details

Alternative Name:	CACNA1G (CACNA1G Products)
Background:	<p>Synonyms: NBR13, Cav3.1, Ca(V)T.1, Voltage-dependent T-type calcium channel subunit alpha-1G, Cav3.1c, Voltage-gated calcium channel subunit alpha Cav3.1, CACNA1G, KIAA1123</p> <p>Background: Voltage-sensitive calcium channels (VSCC) mediate the entry of calcium ions into excitable cells and are also involved in a variety of calcium-dependent processes, including muscle contraction, hormone or neurotransmitter release, gene expression, cell motility, cell division and cell death. The isoform alpha-1G gives rise to T-type calcium currents. T-type calcium channels belong to the "low-voltage activated (LVA)" group and are strongly blocked by mibefradil. A particularity of this type of channel is an opening at quite negative potentials and a voltage-dependent inactivation. T-type channels serve pacemaking functions in both central neurons and cardiac nodal cells and support calcium signaling in secretory cells and vascular smooth muscle. They may also be involved in the modulation of firing patterns of neurons which is important for information processing as well as in cell growth processes.</p>
Gene ID:	8913
UniProt:	O43497

Application Details

Application Notes:	FCM 1:20-100 IF(IHC-P) 1:50-200 IF(IHC-F) 1:50-200 IF(ICC) 1:50-200
Restrictions:	For Research Use only

Handling

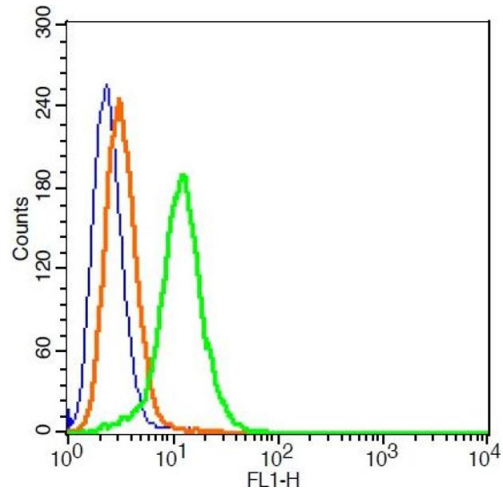
Format:	Liquid
Concentration:	1 µg/µL
Buffer:	Aqueous buffered solution containing 0.01M TBS (pH 7.4) with 1 % BSA, 0.03 % Proclin300 and 50 % Glycerol.
Preservative:	ProClin
Precaution of Use:	This product contains ProClin: a POISONOUS AND HAZARDOUS SUBSTANCE, which should be handled by trained staff only.
Storage:	-20 °C

Handling

Storage Comment: Store at -20°C. Aliquot into multiple vials to avoid repeated freeze-thaw cycles.

Expiry Date: 12 months

Images



Flow Cytometry

Image 1. MCF7 cells probed with CACNA1G Polyclonal Antibody, ALEXA FLUOR® 488 Conjugated (bs-2781R-A488) at 1:100 for 30 minutes compared to control cells (blue) and isotype control (orange).