



[Go to Product page](#)

Datasheet for ABIN891173

## anti-Claudin 1 antibody (AA 121-211) (Alexa Fluor 488)

### 1 Image

#### Overview

Quantity:	100 µL
Target:	Claudin 1 (CLDN1)
Binding Specificity:	AA 121-211
Reactivity:	Human, Rat, Mouse
Host:	Rabbit
Clonality:	Polyclonal
Conjugate:	This Claudin 1 antibody is conjugated to Alexa Fluor 488
Application:	Western Blotting (WB), Immunofluorescence (Paraffin-embedded Sections) (IF (p)), Flow Cytometry (FACS), Immunofluorescence (Cultured Cells) (IF (cc))

#### Product Details

Immunogen:	KLH conjugated synthetic peptide derived from mouse Claudin 1
Isotype:	IgG
Cross-Reactivity:	Human, Mouse, Rat
Purification:	Purified by Protein A.

#### Target Details

Target:	Claudin 1 (CLDN1)
Alternative Name:	Claudin 1 ( <a href="#">CLDN1 Products</a> )
Background:	Synonyms: AI596271, Claudin-1, Cldn1

## Target Details

---

Background: Claudins function as major constituents of the tight junction complexes that regulate the permeability of epithelia. While some claudin family members play essential roles in the formation of impermeable barriers, others mediate the permeability to ions and small molecules. Often, several claudin family members are coexpressed and interact with each other, and this determines the overall permeability. CLDN1 is required to prevent the paracellular diffusion of small molecules through tight junctions in the epidermis and is required for the normal barrier function of the skin. Required for normal water homeostasis and to prevent excessive water loss through the skin, probably via an indirect effect on the expression levels of other proteins, since CLDN1 itself seems to be dispensable for water barrier formation in keratinocyte tight junctions.

---

Gene ID: 12737

---

UniProt: [O88551](#)

---

Pathways: [Cell-Cell Junction Organization](#), [Hepatitis C](#)

## Application Details

---

Application Notes: FCM 1:20-100  
IF(IHC-P) 1:50-200  
IF(IHC-F) 1:50-200  
IF(ICC) 1:50-200

---

Restrictions: For Research Use only

## Handling

---

Format: Liquid

---

Concentration: 1 µg/µL

---

Buffer: Aqueous buffered solution containing 0.01M TBS (pH 7.4) with 1 % BSA, 0.03 % Proclin300 and 50 % Glycerol.

---

Preservative: ProClin

---

Precaution of Use: This product contains ProClin: a POISONOUS AND HAZARDOUS SUBSTANCE, which should be handled by trained staff only.

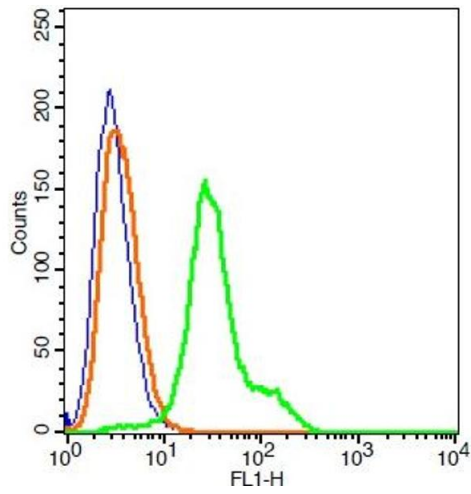
---

Storage: -20 °C

---

Storage Comment: Store at -20°C. Aliquot into multiple vials to avoid repeated freeze-thaw cycles.

---



### Flow Cytometry

**Image 1.** Human 293T cells probed with Claudin 1 Polyclonal Antibody, A488 conjugated (bs-1428R-A488) (green) at 1:100 for 30 minutes compared to unstained cells (blue) and isotype control (orange).