

Datasheet for ABIN898712  
**anti-GGT1 antibody (AA 351-460) (FITC)**[Go to Product page](#)

## 1 Image

## Overview

Quantity:	100 µL
Target:	GGT1
Binding Specificity:	AA 351-460
Reactivity:	Human
Host:	Rabbit
Clonality:	Polyclonal
Conjugate:	This GGT1 antibody is conjugated to FITC
Application:	Western Blotting (WB), Flow Cytometry (FACS)

## Product Details

Immunogen:	KLH conjugated synthetic peptide derived from human GGT1
Isotype:	IgG
Cross-Reactivity:	Human
Predicted Reactivity:	Mouse,Rat
Purification:	Purified by Protein A.

## Target Details

Target:	GGT1
Alternative Name:	GGT1 ( <a href="#">GGT1 Products</a> )
Background:	Synonyms: GGT, GTG, CD224, GGT 1, D22S672, D22S732, Gamma-glutamyltranspeptidase 1,

## Target Details

Gamma-glutamyltransferase 1, Glutathione hydrolase 1, Leukotriene-C4 hydrolase, GGT1

Background: Cleaves the gamma-glutamyl bond of extracellular glutathione (gamma-Glu-Cys-Gly), glutathione conjugates, and other gamma-glutamyl compounds. The metabolism of glutathione releases free glutamate and the dipeptide, cysteinyl-glycine, which is hydrolyzed to cysteine and glycine by dipeptidases. In the presence of high concentrations of dipeptides and some amino acids, can also catalyze a transpeptidation reaction, transferring the gamma-glutamyl moiety to an acceptor amino acid to form a new gamma-glutamyl compound. Initiates extracellular glutathione (GSH) breakdown, provides cells with a local cysteine supply and contributes to maintain intracellular GSH level. It is part of the cell antioxidant defense mechanism. Isoform 3 seems to be inactive.

Gene ID: 2678

UniProt: [P19440](#)

## Application Details

Application Notes: FCM 1:20-100

Restrictions: For Research Use only

## Handling

Format: Liquid

Concentration: 1 µg/µL

Buffer: Aqueous buffered solution containing 0.01M TBS ( pH 7.4) with 1 % BSA, 0.03 % Proclin300 and 50 % Glycerol.

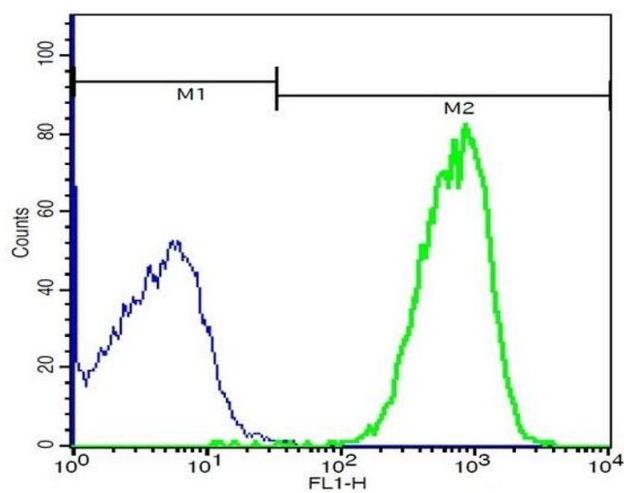
Preservative: ProClin

Precaution of Use: This product contains ProClin: a POISONOUS AND HAZARDOUS SUBSTANCE, which should be handled by trained staff only.

Storage: -20 °C

Storage Comment: Store at -20°C. Aliquot into multiple vials to avoid repeated freeze-thaw cycles.

Expiry Date: 12 months



### Flow Cytometry

**Image 1.** Mouse hepatocytes probed with Rabbit Anti-GGT1 Polyclonal Antibody, FITC Conjugated (ABIN898712) at 1:100 (green) for 40 minutes compared to control cells (blue)